

旭川 ASAHIKAWA Info

October 2013 VOL. 203

Published by AIC

Also visit us at: <http://asahikawaic.jp/en/>



Hokkaido News Top 5



October 2013

Compiled by TAKADA Nobuhiro

August 31

“Ironman Japan Hokkaido,” an international long-distance triathlon, was held in the vicinity of Lake Toya and Mt. Yotei. 1,400 athletes from 35 countries participated in the event. All the participants started off by swimming 3.8 kilometers in Lake Toya at 6:00am, then cycled for 180.2 kilometers to Mt. Yotei and back to the lake, and finally ran around the lake for 42.2 kilometers. Martin Jensen from Denmark finished first, marking a record of 8 hours 47 minutes and 53 seconds.

September 2

The mayor of Asahikawa City announced at a regular press conference that “Crystal Bridge” is scheduled to be placed in service from November 1st and on. The new bridge is located next to JR Asahikawa Station, connecting the center of the city and Kagura area. Access to “Taisetsu Arena,” “Taisetsu Crystal Hall” and the other facilities will be significantly improved.

September 7

Rising sea temperature followed by scorching heat of this summer has had serious consequences on fishery industry in Hokkaido. Fishery operators are having poor catch of fish like Pacific Saury and squid in cooler sea. Instead, they have caught more tuna and sunfish in warmer water than ever, which seldom come up to the coast of Hokkaido.

September 8

Two parts of “Asahikawa Kitasaito Garden,” which have been under construction on the south of JR Asahikawa Station, have opened on September 8th. One is named “South of the Station Area,” close to the south entrance of the station, and the other is called “A Field on Left Bank Area,” located on the opposite shore to the station. In addition to a lawn full of leafy shades in summer, 50,000 flowers of 80 different kinds have been planted in the areas.

September 9

KIKUCHI Katsuhiro, a professor emeritus at Hokkaido University, and his fellow researchers specializing in the study of snow and ice have published a pictorial book on snow crystals that covers almost all types of snowflakes around the world. Their new classification of snowflakes called “the global scale classification” has also been posted on Atmospheric Research Website operated by an authoritative academic publisher in the Netherlands. Professor KIKUCHI and his fellow researchers had collected samples of snow crystals all over the world including Canada, Scandinavia, Greenland, Alaska and Antarctica, to name a few.



For further information or to register for events contact:

Asahikawa International Committee
(SASAKI Mai, Kim LACEY, or
SAITO Emmy)

Location:

International Affairs Division, Civic and
Community Services Dept.

Address:

Asahikawa International Center
Feeeal Asahikawa 7F, 1-jo-dori 8-
chome, Asahikawa 070-0031

Tel: (0166) 25-7491

Fax: (0166) 23-4924

E-mail:

cir_kokusai@city.asahikawa.hokkaido.jp

Inside This Issue...

Hokkaido News Top 5 <i>By TAKADA Nobuhiro</i>	1	Hello Halloween <i>“Superstitions around the World”</i> <i>By KAWAI Tatsuo</i>	5
Upcoming Events	2-3	Hello Wild Flowers <i>“Ezo-oyamanorindo”</i> <i>By KUDOH Hitoshi</i>	6
Hello Asahikawa Anna Schartman <i>Interviewed by AIC</i>	4	Movies	7
		Bulletin Board	8

Special Thanks to KAWAI Tatsuo, Proofreader & Advisor

Asahikawa Vienna International Violin Seminar

旭川・ウィーン国際ヴァイオリンセミナー

Domestically and internationally acclaimed musicians and students will not only perform various concerts but also offer master-class lessons and an outreach concert. Some of the musicians for this event include M. Frischenschlager, the Honorary President of Vienna National College of Music and a chair for the International Fritz Kreisler Competition.

Date: Now to October 4th (Friday)

Time and programs: vary each day. Please contact Asahikawa Taisetsu Crystal Hall committee for more information at 0166-69-2000.

Venue: Asahikawa Taisetsu Crystal Hall (Kagura 3-jo 7-chome)



Children's Play Exhibition by Asahikawa Literary Museum

旭川文学資料館・企画展 子供の遊び展

Annual children's play exhibition is happening again this autumn. Kagura elementary school's 5th and 6th graders are displaying their works this time. Additionally, there will be two special events coming up; on October 5th (Saturday) participating children can make cool paper airplanes and fly them; October 19th (Saturday) will be a play date with various activities, including cat's cradle, origami, card games and more.

Date: October 1st (Tuesday) to November 8th (Friday), closed on Sundays, Mondays and national holidays.

Time: 10:00 am to 4:00 pm

Venue: Asahikawa Literary Museum, Exhibition Room 2 (located inside Asahikawa City Tokiwa Park Tokiwakan)

Admission: Free

For Further Information Contact: 0166-22-3310 (Asahikawa Literary Museum)



Yoshida Brothers' Japanese Festival

吉田兄弟 和の祭典

Are you looking for a chance to listen to Japanese traditional instruments? Well, here is your chance! The Yoshida Brothers who won the "Traditional Japanese Music Album of the Year" for the annual Japan Gold Disc will be playing the *shamisen* (three-stringed Japanese guitar) with a group named "Shippu." Additionally, three persons from group "Wasabi" will accompany them with various traditional Japanese instruments.

Date: October 3rd (Thursday)

Time: First performance—3:00 pm. Second performance—6:30 pm

Venue: Asahikawa Civic Culture Hall (7-jo 9-chome)

Ticket Offices: Gyokkodo (Feeeal Asahikawa 5F), Coach&Four Music Corner

You can also order by fax (011-261-9995) which will cost extra ¥600.

Admission: SS-Seats ¥5,500, S-Seats ¥4,500, A-Seats ¥3,500

For Further Information Contact: 011-261-9991 (Trust Planning Create)

Please call between 9:30 am to 6:00 pm.



Commemoration Concert of the 25th Anniversary of Debut "Listening to Time"

デビュー25周年記念コンサートシリーズ "時を聴く"

UESUGI Haruo will celebrate his 25th anniversary since his debut through this commemorative concert. Some of the pieces he will perform are the all-time best classics, including the works of F. Chopin, L.v. Beethoven, J.S. Bach and I. Stravinsky. If you are in search of good autumn classical music, this would be worth checking out.

Date: October 8th (Tuesday)

Time: Doors 6:30 pm, Show 7:00 pm

Venue: Asahikawa Taisetsu Crystal Hall (Kagura 3-jo 7-chome)

Ticket Offices: Crystal Hall Museum Shop, Yamaha Music Retailing Asahikawa, Kawai Instrument, Gyokkodo Feeeal Asahikawa, Coach&Four Music Corner

Admission: Adults ¥2,500, Students ¥2,000 [¥500 extra if not purchased in advance]

For Further Information Contact: 080-5592-6028 (WAKASUGI)



The 9th Friendship Concert of Trio Wien 第9回フレンドシップコンサート ウィーン三重奏団

“Trio Wien” is a trio from Vienna, composed of Raphael Flieder (cello), Maximilian Flieder (piano) and Daniel Froschauer (violin). Some of the programs of the concert will include pieces of F. Chopin, S. Rachmanioff and F. Schubert.

Date: October 9th (Wednesday)
Time: Doors 6:00 pm, Show 6:30 pm
Venue: Asahikawa Taisetsu Crystal Hall (Kagura 3-jo 7-chome)
Admission: General ¥3,000, Senior Citizens (65 and older) and students ¥2,500
For Further Information Contact: 0166-63-2929 (Taisetsu Crystal Hall Ticket Office)



Ensemble Clarte by NHK Symphony Orchestra Members N響メンバーによるアンサンブルクラルテ

Ensemble Clarte is a chamber music group which was created by six active members of NHK Symphony Orchestra in 1987. The Clarte includes two violinists, a violist, a cellist, a contrabassist and a pianist. Celebrating the 20th anniversary of Asahikawa Taisetsu Crystall Hall, this special concert will include solo performances of classical music pieces as well as an original arrangement by a member YOKOYAMA Toshiro, aiming for the perfect harmony of ensemble.

Date: October 17th (Thursday)
Time: Doors 6:00 pm, Show 6:30 pm
Venue: Asahikawa Taisetsu Crystal Hall (Kagura 3-jo 7-chome)
Admission: General ¥3,500, Senior Citizens (65 and older) and disabled ¥3,000, Students ¥1,500 [¥500 extra charge if tickets are purchased on the day of the concert.]
Ticket and Play Guide Offices: Kawai Asahikawa Shop, Gyokkodo Feal Asahikawa, Yamaha Music Retailing, Asahikawa Civic Cultural Hall, Asahikawa Taisetsu Crystal Hall
For Further Information Contact: 0166-69-2000 (Taisetsu Crystal Hall)



SONG&DANCE 60 YEARS BOUQUET OF THANKS 劇団四季ソング&ダンス 60 感謝の花束

SHIKI theatre company will be coming to Asahikawa as a part of their 60 years' anniversary nationwide tour. Some of the performances of this Song & Dance will include *Cats*, *The Lion King*, *The Phantom of the Opera*, and *Aida*. The songs and famous scenes of musical/ opera that they perform are all reconstructed to original arrangements. This will be a popular event, so make sure to get your ticket as soon as you can!

Date: October 21st (Monday)
Time: Doors 6:00pm, Show 6:30 pm
Venue: Asahikawa Civic Culture Grand Hall (7-jo 9-chome)
Admission: SS-Seats ¥8,000, S-Seats ¥6,500, A-Seats ¥5,000, B-Seats ¥3,000 (currently, SS and B-Seats are all sold out)
Ticket Offices: JR Hokkaido (at green counter or Twinkle Plaza), Gyokkodo Asahikawa, FM Riviere Ticket Box (3-jo 7-chome Yoshitake Park Building 3F), Ticket Pia at 7-Eleven or Coach&Four (P code: 430-059), Lawson Ticket (L-15672)
 [online tickets also available at Shiki on-line <http://489444.com>]
For Further Information Contact: 0166-55-1443 (Asahikawa Dream)



“Delicious autumn! My very soul is wedded to it, and if I were a bird I would fly about the earth seeking the successive autumns.”

George Eliot (1819-1880)

EVENTS IN ASAHIKAWA FOR OCTOBER



Hello Asahikawa!

Name: Anna Schartman

Hometown: Cincinnati, Ohio, United States

Interviewed: September 19th, 2013 by AIC

AIC: *Please tell us a little about yourself.*

Anna: My name is Anna Schartman and I am the new assistant language teacher (ALT) at Asahikawa Kita High School. I am an American from the city of Cincinnati, Ohio, which is a small city located in the Midwest. I went to university in Seattle at the University of Washington where I majored in linguistics. After I graduated, I worked in Thailand for two years.

AIC: *How do you like your job in Asahikawa so far?*

Anna: I am super happy to be posted here; the teachers have been very friendly and welcoming and the students are great kids. I find this city extremely pleasant to live in. Not only is it situated right in the middle of some beautiful nature but it offers all the amenities of a large city. I hope to be living here in Asahikawa for quite some time.

AIC: *That is great. Have you been doing anything special in the city so far?*

Anna: I have only been here about a month but so far I have been biking all over the city, especially along the bike paths next to the many rivers. My hometown has nothing like these bike paths, so I have enjoyed using them quite a lot. Furthermore, I have also enjoyed exploring around the Kaimono Koen where I went to Tabemarushe last weekend and I will say that I have never been to a food festival that big before. It was pretty amazing.

AIC: *Is there anything particular you would like to try during your stay in Japan?*

Anna: Well, besides exploring Asahikawa I would also like to look into good ways to go hiking and camping around Hokkaido. I know that Daisetsu National Park is very close, which I definitely want to go see. I also want to try out some of the winter sports such as cross country skiing and snowshoeing.

AIC: *Sounds like you will be quite busy during winter too. I know you are here as an ALT but are you interested in learning the Japanese language?*

Anna: Of course. It's other interest that I am pursuing right now. I am studying hard every day so that I can communicate to people here which is something that I think is very important. It's something I really want to be able to do. So far I have an awesome Japanese tutor, and I am looking for conversation partners to help me practice speaking Japanese.

AIC: *You mentioned earlier that you used to work in Thailand. Sounds pretty amazing.*

Anna: Yes, I transplanted myself to Bangkok where I had gotten a job teaching EFL at a university a couple kilometers outside the city. During my stay I learned a lot about Thai food culture, which is one of my hobbies. This means mostly that I traveled around finding as many delicious restaurants and street vendor shops as possible and trying to figure out the process of how they made their food.

AIC: *Is there anything you would like to add before we close this interview?*

Anna: I just want to say that I have wanted to come to Japan for a long time, ever since I was in high school. So I am very excited to be able to realize this dream of mine. I look forward to being better acquainted with my new home in the coming months.

AIC: *Wish you all the best during your stay in Asahikawa, and I appreciate you taking time to talk today, Anna!*

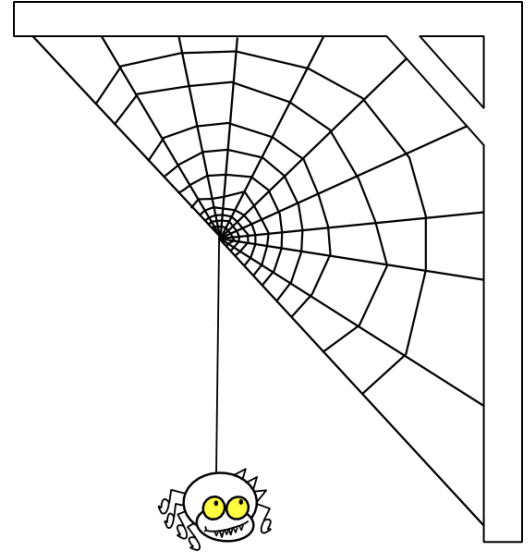
Anna: You are welcome.

Superstitions and Charms in the World

Compiled by KAWAI Tatsuo

Since Halloween is coming up at the end of this month, here are some scary superstitions (or truth!) of Japan to read for fun.

- ◇ *If you see a spider in the morning, it means good luck so you shouldn't kill it. If you see one at night though, it means bad luck so you should kill it.*



- ◇ *If you whistle at night, a snake will crawl into your house.*



- ◇ *If you clip your nails at night, you will not be with your parents at their deathbed.*



- ◇ *When a funeral hearse drives past, you must hide your thumb in a fist.*

- ◇ *Stepping on the cloth border of a tatami mat brings bad luck.*



- ◇ *You should never sleep with your head in North position or you will have a short life (this is the way a body is laid out at funeral.)*

Hello Wild Flowers

Wandering among the Wild Flowers around Asahikawa

By: Hitoshi KUDOH

The pretty galaxy train climbed on and on winding gently through the fluttering silver pampas grass. The pale glimmerings of the markers and the waters of the Galaxy were seen around them.

“O, oh! The gentians are in full bloom. It is autumn already,” said Campanello pointing them out of the window.

In the border grass of the railway, stunning navy blue gentians were blooming as if carved out of moonstone.

“Shall I jump off the train and fetch one of the gentians?” said Giovanni excitedly.

“Too late. They passed far behind already.”

As soon as Campanello said so, another batch of glowing gentians went past.

ezo-oyamanorindô

(蝦夷御山竜胆)

Gentiana triflora v. *montana*

Family: Gentianaceae

Common name: Clustered Gentian,
Three-flowered Gentian

Description:

A herbaceous, perennial. The erect or slightly arching stem is unbranched and reaches about 20-60cm. Bluish green hairless leaves are opposite, unstalked and lanceolate. In late summer, it bears deep blue to purple, occasionally white flowers, solitary to 6 on the upper of the stem. A flower is 3.5-4.5cm long.

(Photo)

Water Color Painting of a Ezo- Oyamanorindo
By Hitoshi KUDOH.



★ Movies ~ October ★

*Every Wednesday is "Ladies' Day." Admission is ¥1,000 (tax included) for women at all theaters.

*<Dinos Cinemas Only> Every Thursday is "Men's Day." Admission is ¥1,000 (tax included) for men.

*The 1st day of every month is "Movie Day" in Asahikawa. Admission (tax included) is ¥1,000 for Adults, ¥800 for Senior High School Students and Under at all theaters.

★ **Cineplex 7 Asahikawa:** Nagayama 12-jo 3-chome Western Powers Nagayama / ☎ 49 – 1000

URL: <http://www.kadokawa-cineplex.co.jp/asahikawa/> (Japanese)

Directions: Take Dohoku Bus No. 66, 72 or 665 at Bus stop No. 18 in front of Feeeal Asahikawa (1-jo-dori 8-chome). Get off at "Nagayama 10 (ju)-jo 3 (san)-chome."

Now Showing

- Shazai no Osama (Japanese)
- Soshite Chichi ni Naru (Japanese)
- Elysium (English) PG12
- Despicable Me 2 (Japanese Dub/Animation 3D)
- Ataru the first love & the last kill (Japanese)
- The Wolverine -SAMURAI- (English 2D/3D)
- Unforgiven (Japanese)
- Space Pirate Captain Herlock 2D/3D (Japanese)
- Sadako 2D/3D (Japanese) PG12
- Man of Steel (English)
- Shonen H (Japanese)
- Nazotoki wa Dinner no Ato de (Japanese)
- Kaze Tachinu (Japanese/Animation)

Coming Soon

- Hakuoki the Movie (Japanes/Animation) PG12 10/12
- Hidamari no Kanojo (Japanese) 10/12
- Oshin (Japanese) 10/12
- Diana (English) 10/18
- Jinrui Shikin (Japanese) 10/19
- Kyoaku (Japanese) R-15 10/19
- Kiyoku Yawaku (Japanese) 10/26
- Precure the Movie (Japanese/Animation) 10/26
- Maho Shojo Madoka□Magika (Japanese/Animation) 10/26
- Percy Jackson~Sea of Monsters~ (English) 11/1
- SPEC ~Close~ Zen no Hen (Japanese) 11/1
- Carrie (English) 11/8
- The Counselor (English) 11/15
- Kiyosu Kaigi (Japanese) 11/19

★ **Dinos Cinemas:** Taisetsu-dori 5-chome / ☎ 21 – 1218

URL: http://www.geodinos.jp/cinema/asa_schedule.php?StoreID=5 (Japanese)

Directions: Take Dohoku Bus No. 61, 62, 67 or 667 at Bus stop No. 18 in front of Feeeal Asahikawa (1-jo-dori 8-chome). Get off at "Nippon Seishi Mae."

Now Showing

- Shazai no Osama (Japanese)
- Despicable Me 2 (Japanese Dub/Animation 3D)
- Unforgiven (Japanese)
- Space Pirate Captain Herlock 2D/3D (Japanese)
- Ataru the first love & the last kill (Japanese)
- The Wolverine -SAMURAI- (English 2D/3D)
- Elysium (English) PG12
- Man of Steel (English)
- Jigoku de Naze Warui (Japanese)
- Kaze Tachinu (Japanese/Animation)
- Shonen H (Japanese)
- Nazotoki wa Dinner no Ato de (Japanese)
- Sadako 2D/3D (Japanese) PG12
- Soshite Chichi ni Naru (Japanese)

Coming Soon

- R100 (Japanese) R-15 10/5
- End of Watch (English) 10/5
- Hidamari no Kanojo (Japanese) 10/12
- Oshin (Japanese) 10/12
- Natsu no Owari (Japanese) 10/12
- R.I.P.D. (English) 10/18
- Jinrui Shikin (Japanese) 10/19
- Kitakitsune Monogatari (Japanese) 10/19
- Tomogui (Japanese)R-15 10/19
- Code Geass ~The Wyvern Divided~ (Japanese/Animation) 10/26
- Warm Bodies (English) 10/26
- SPEC ~Close~ Zen no Hen (Japanese) 11/1
- Percy Jackson ~Sea of Monsters~ (English) 11/1
- Kiyosu Kaigi (Japanese) 11/19

Movie schedules change often. Please call the theater for confirmation and details.

Halloween at International Center

Asahikawa International Center will be celebrating Halloween with various events!

From **October 21st to the 31st**, we will be offering trick or treat for visiting children.

And on **October 31st**, we have a Halloween Story Night ready for you from **6:30 to 7:30 pm**.

Please stop by and enjoy!



Fun Fridays

Variety of interesting activities, such as games, discussions, introductions and quizzes, are held monthly. Meet new people, relax, relate, and communicate through English.



Dates: October 11, November 8, December 13 (2nd Fri of the month)

Time: 1:00 ~ 3:00pm
& 6:50 ~ 8:50pm

Location: Asahikawa International Center, Common Meeting Room (1) Feeeal Asahikawa 7F, 1-jo-dori 8-chome

Charge: ¥1,500 for 3 months
(Free for volunteer leaders)

International Communi-tea

The Asahikawa International Center is hosting International Communi-tea (茶ろん “Salon”) event. There will be two sessions so come join us whenever is convenient for you.

This is an excellent chance to talk and meet people around Asahikawa and the world!

Date: October 29th

Time: 1:00 ~ 2:00pm & 6:30 ~ 7:30pm

Location: Asahikawa International Center Lounge, Feeeal Asahikawa 7F 1-jo-dori 8-chome

Charge: Free



The AIC offers many services to make your life in Asahikawa more enjoyable. Here are just a few:

Volunteer Guide: Volunteers are registered to help translate and interpret.

Event Volunteer: The AIC plans many exciting events throughout the year, such as Friendship Parties.

Why not become a volunteer and help plan these events?

Homestay: Families are registered to welcome you into their homes for an overnight stay or just for an afternoon visit.

For further information or to register, please contact AIC.

Center Computers: The Asahikawa International Center (Feeeal Asahikawa 7F 1-jo-dori 8-chome) has two computers available for public use free of charge. There is a time limit for use and prior registration is necessary. Please feel free to come by and use them anytime as well as check out some of the other services and activities available at the Asahikawa International Center.

Spread the Word...

Contribute to the AIC newsletter and share any interesting information you may have with other readers. You may write on any topic including, items to buy or sell, offers for culture/language exchanges, or write an essay about your life in Asahikawa or your hometown. The article should not be profit related! Please send your submissions to us at the AIC.



Asahikawa International Committee, International Affairs Division

Asahikawa International Center Feeeal Asahikawa 7F, 1-jo-dori 8-chome, Asahikawa 070-0031

Tel: (0166) 25-7491 Fax: (0166) 23-4924

E-mail: cir_kokusai@city.asahikawa.hokkaido.jp

****The opinions expressed in the essays are those of the writers and do not necessarily reflect the opinions of the Asahikawa International Committee or the City of Asahikawa.****