

旭川 ASAHIKAWA Info

April 2012 VOL. 185

Also visit us at: <http://asahikawaic.jp/en/>



Hokkaido News Top 5



April 2012

Compiled by TAKADA Nobuhiro

February 26

Japan Air Lines started serving 16 kinds of domestically-produced cheese with wine to international passengers in first and executive class, until September. Fourteen out of 16 kinds of cheese are produced in Hokkaido. The airline has decided to provide its passengers with the fine choice of domestic cheese because Japanese cheese has recently received increased recognition throughout Europe.

February 28

Hakodate has had record snowfall caused by a low-pressure system parked over southern Hokkaido. The depth of snow was 91 centimeters which, along with 1977 and 1985, is an all-time high since records began. The heavy snow caused various problems to everyday life, as Hakodate is a city with least amount of snowfall in Hokkaido.

February 29

A group of researchers at Hokkaido University has succeeded in developing a new organic luminescent material for LED that is 100 times brighter than conventional inorganic luminescent material. The new illuminant offers resistance to high temperatures, over 300°C. HASEGAWA Yasuchika, professor at the Research Institute of Technology at Hokkaido University and a leader of the research team, made the announcement at briefing session in Tokyo.

March 2

Students in Strasburg, in eastern France, have created the official website of the Town of Matsumae, in French. They posted the French version on the town's website. An instructor of Japanese language at the university, TOZAKI Yumi (from Asahikawa) had come up with the idea to translate the website into French as a part of her Japanese language class.

March 3

A man was seriously injured after being in the leg by two police officers in front of A-Mall Shopping Center in Toyooka, Asahikawa. Before being shot the 44-year-old male had attacked one of the officers with a knife, injuring the police officer's face. The police had been pursuing the man in connection to a property crime.



For further information or to register for events contact:

Asahikawa International Committee
(SASAKI Mai, Sergej NESIC, or
SAITO Emmy)

Location:

International Affairs Division, Civic and
Community Services Dept.

Address:

Asahikawa International Center
Feeeal Asahikawa 7F, 1-jo-dori 8-
chome, Asahikawa 070-0031

Tel: (0166) 25-7491

Fax: (0166) 23-4924

E-mail:

cir_kokusai@city.asahikawa.hokkaido.jp

Inside This Issue...

Hokkaido News Top 5 <i>By TAKADA Nobuhiro</i>	1	Hello Wildflowers "Ezo-Engosaku" <i>By KUDOH Hitoshi</i>	7
Upcoming Events	2-3	Butterflies of Asia "Parnassius Genus in East Asia" <i>By KAWAI Tadao & NISHIKAWA Noriyuki</i>	8
Hello Asahikawa "Joaquin Rodriguez" <i>Interviewed by AIC</i>	4-5	Movies	9
Life In Japan "Marriage in Japan" <i>By SEO Ayumi</i>	6	Bulletin Board	10

Special Thanks to KAWAI Tatsuo
Proofreader & Advisor

“VOYAGE THROUGH LANDSCAPE PAINTINGS” EXHIBITION

ヴォヤージュ風景の旅

An exhibition featuring a collection of brightly coloured oil paintings by a number of distinguished Japanese painters, depicting the diverse scenery of the northern landscape.

Date: Now to April 8th (Sunday)

Time: 9:30am~5:00pm (last entry 4:30pm) Museum is closed on Mondays.

Venue: Hokkaido Asahikawa Museum of Art (Tokiwa Park)

Admission: General ¥500(* for groups of over 10 people ¥400) University & High School Students ¥300 (* ¥250, free on Saturdays) & Junior High School Students & Under, Pensioners, Disabled, & Persons with special needs Free.

Ticket Office: Hokkaido Asahikawa Museum of Art

For further information contact: 25-2577 (Hokkaido Asahikawa Museum of Art)



LE FESTIN DE FLUTE - FLUTE FESTIVAL

フルートの宴

A dazzling performance featuring four of Japan's leading young flutists, MINAMI Kanako, KANDA Yuya, YOSHIDA Anna, YAMAUCHI Toyomitsu, and SHINMACHI Yumi on piano. The program will include music from Joseph Bozza, Pyotr Tchaikovsky, François Devienne, Albert Doppler, and Raymond Guiot.

Date: April 8th (Sunday)

Time: Doors 2:00pm, Show 2:30pm

Venue: Takasu Melody Hall (Takasu Minami 1-jo 3-chome)

Admission: General ¥3,000, Students ¥2,000, Elementary School Students ¥500

Ticket Office: Yamaha Music Asahikawa Store, Takasu Melody Hall, Asahikawa Taistesu Crystal Hall

For further information contact: 48-9454 (MINAMI)



SAKAMOTO FUYUMI CONCERT IN ASAHIKAWA

坂本冬美コンサート

SAKAMOTO Fuyumi is one of Japan's most popular contemporary female *Enka* artists with a career spanning over 25 years. The Wakayama native debuted on to the music scene in 1987 at the age of 19 with the hit “*Abare Taiko.*” Her career really kicked off in the 90's with the success of her album “*Hi No Kuni No Onna.*” She had since toured extensively around Japan and abroad and has appeared in popular TV dramas and numerous commercials. She will also perform songs from her newest album “*Mata Kimi Ni Koishiteru.*”

Date: April 12th (Thursday)

Time: Afternoon Show 2:30pm, Evening Show 6:30pm

Venue: Asahikawa Civic Culture Hall (7-jo 9-chome)

Admission: S-Seats ¥6,500, A-Seats ¥6,000

Ticket Office: Lawson Ticket, Ticket Pia, Gyokkodo

For further information contact: 011-261-9991 (Trust KIKAKU Create)



5TH ANNUAL “ASAHIKAWA CUP” ALL-HOKKAIDO WHEELCHAIR BASKETBALL TOURNAMENT

第5回「旭川カップ」車椅子バスケットボール全道大会

Don't miss your chance to view in person this exhilarating tournament which brings together the best wheelchair basketball players from around Hokkaido. The sport has greatly grown in popularity in recent years and so has the quality of the players. Last year the tournament was a resounding success, with capacity crowds. Make sure to be early to get a seat.

Date: April 14th (Saturday) & 15th (Sunday)

Time: April 14th From 11:30am, April 15th From 9:30am

Venue: Asahikawa Municipal Gymnasium (Hanasakicho 5-chome)

Admission: Free

For further information contact: 54-5411 (Asahikawa Municipal Gymnasium)



35TH ANNUAL ASAHIKAWA PHILHARMONIC ORCHESTRA'S REGULAR CONCERT 第35回定期演奏会

This year's regular concert program by "Asahi Phil" will include the prelude to Franz Liszt's "Symphonic Poems," Gabriel Fauré's "Pelléas et Mélisande," and Pyotr Tchaikovsky's "Symphony No. 6 - Pathétique."

Date: May 6th (Sunday)
Time: Doors 2:30pm, Show 3:00pm
Venue: Asahikawa Civic Culture Hall (7-jo 9-chome)
Admission: General ¥1,000, High School Students & Under ¥500
Ticket Office: Yamaha Music Asahikawa Store, Asahikawa Taisetsu Crystal Hall, Asahikawa Civic Culture Hall
For further information contact: 080-5590-4217 (ASAKAWA)



"AMERICAN GRAFFITI" ASAHIKAWA INTERNATIONAL CENTER'S WORLD CINEMA SALON 世界映画サロン「アメリカ編」 映画「アメリカングラフィティ」

American Graffiti is a 1973 film co-written/directed by George Lucas, and starring Richard Dreyfuss, Ron Howard, Paul Le Mat, Charles Martin Smith, Cindy Williams, Candy Clark, Mackenzie Phillips and Harrison Ford. Set in 1962 Modesto, California, American Graffiti is a study of the cruising and rock and roll cultures popular among the post-World War II baby boom generation.

Prior to the screening of the movie, the Public Affairs Officer of the US Consulate-General in Sapporo, Mr. John C. Taylor, will give a brief lecture on the movie. There will also be a question and answer session with Mr. Taylor after the screening.

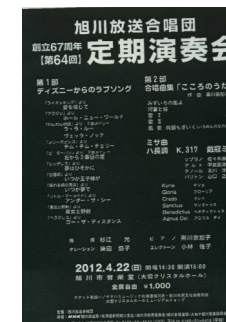
Date: April 21st (Saturday)
Time: 3:30pm to 6:00pm
Venue: Asahikawa International Center (1-jo-dori 8-chome "Feeeal" Asahikawa 7F)
Admission: Free (limit of 50 people)
For further information contact: 25-7491 (Asahikawa International Center)



ASAHIKAWA BROADCAST CHOIR 67TH ANNIVERSARY & 64TH REGULAR CONCERT 旭川放送合唱団 創立67周年第64回定期演奏会

This year's concert by one of Asahikawa's most popular chorus choirs will feature a typically diverse program, including Disney love songs, the chorus's founding song "Kokoro no Uta" (Song of the Heart,) and Mozart's Mass. The wonderful acoustics of the Asahikawa Taisetsu Crystal Hall are the perfect accompaniment to this world class choir.

Date: April 22nd (Sunday)
Time: Show 3:00pm
Venue: Asahikawa Taisetsu Crystal Hall (Kagura 3-jo 7-chome)
Admission: General ¥1,000
Ticket Office: Yamaha Music Asahikawa Store, Asahikawa Taisetsu Crystal Hall
For further information and tickets contact: 55-3540 (Yamaguchi,) 51-5418 (Hiraga)



YAMAUCHI KEISUKE LIVE TOUR 2012 山内恵介 ライブツアー2012年

YAMAUCHI made his album debut in 2001 with his famous phrase "Boku wa Enka na Koko-sei" (I'm an Enka style high school student,) which was in stark contrast to the prevailing youth pop culture. He has since released ten albums, twelve hit singles, and made numerous TV and movie appearances. The 2012 tour serves also as a promotion for his new hit single "Yukigare no Viola."

Date: April 25th (Wednesday)
Time: Afternoon Doors 1:30pm Show 2:00, Evening Doors 5:30pm Show 6:00pm
Venue: Asahikawa Civic Culture Hall (7-jo 9-chome)
Admission: General ¥5,000
Ticket Office: Lawson Ticket, Ticket Pia, Gyokkado, FM Riberu
For further information and tickets contact: 011-533-7711 (ADASH)



EVENTS IN ASAHIKAWA FOR APRIL



Hello Asahikawa!

Name: Joaquin Rodriguez

Hometown: San Salvador de Jujuy, Argentina

Interviewed: 29th March, 2012

By AIC

AIC: *What do you do here in Asahikawa?*

Joaquin: I am an international exchange student from Argentina on the AFS exchange program. I am a second year student at Asahikawa University High School, and I live with my host family in Nagayama. I'll be in Asahikawa for one year.

AIC: *Why did you choose to come to Asahikawa?*

Joaquin: Mainly because it's really different to Argentina. I initially wanted to go to Germany or Holland, but my mom said that I could go to those countries anytime for a vacation, but I wouldn't be able to get the opportunity to live and study in Japan so easily as it's so far away and so different. She insisted I come to Japan and I agreed with her.

AIC: *Is Japan popular in Argentina?*

Joaquin: Yes, I think Japan is popular all over South America. However, apart from people that have traveled to Asia, most South Americans have a somewhat misconstrued view of Japan and Asia. They think the whole of Asia is like Japan and China, and nothing else. I traveled quite a bit, so I never thought of Asia in that way.

AIC: *Have you been to Japan before?*

Joaquin: No, never. This is my first time.

AIC: *Which other countries have you visited?*

Joaquin: I lived in Spain for two years, as my family is originally from Spain. We stayed in a small town just north of Barcelona, on the Mediterranean coast. I really love the beach, but my hometown in Argentina is really far away from the beach. I also traveled to all the countries bordering Argentina. That is, Brazil, Paraguay, Uruguay, Bolivia, and Chile.

AIC: *What is favourite country in South America?*

Joaquin: Argentina, of course. It's my home country and I love my culture. I love everything about Argentina.

AIC: *Tell us a little about your hometown?*

Joaquin: My hometown is San Salvador de Jujuy, or commonly known as Jujuy. It's the capital and the biggest city of the Jujuy Province. The population is around 300,000. It's quite different to the rest of Argentina. It's located in the north of the country close to Bolivia, so it's culturally very similar to Bolivia. Bolivia is kind of divided in two. One part is very traditional and has a very old cultural heritage, and the other part is more European. Although my city is in Argentina, it is culturally more similar to the older part of Bolivia. I really love the culture of my hometown. The food is also very different to the rest of Argentina, but it's also a mix of the whole country.

Continued on Page 5

Continued from Page 4

Joaquin: In Jujuy we can enjoy the special local delicacies and food from other parts of the country. Also our music, traditional dress, and so on, are also different to the rest of Argentina. The city has a colonial city center including the Cabildo, the Cathedral and there are colourful Andean carnivals. The population of the city, and of the province in general, has a much more indigenous character than the in rest of the country. Mainly the Quechua, Ay-mara and Chiriguano people and cultures. The climate is pleasant and warm throughout most of the year. Also in regards to food, while in the rest of Argentina they eat mostly meat, in Jujuy we eat a lot of dishes made from corn, a little like polenta. Argentina is famous for its beef, and in Jujuy also beef is popular. We eat every part of the cow except the eyes. Also, the way beef is prepared in Jujuy is very different to the way they prepare it in the rest of the country. Throughout Argentina beef is usually grilled BBQ-style, but in Jujuy we have a different kind of Asado (BBQ). We dig a two-meter deep hole, put in charcoal, and then put in the head of a cow and cover it with a metal cover. Finally you cover it all with earth. It takes a long time to cook, an entire night or more, but when it's done it's so tender you can just take meat off with your fingers. We also have many different kinds of potato.

AIC: *Which is your favorite part of Argentina?*

Joaquin: I love my hometown of course, but my favourite place is a town called San Miguel de Tucumán, we usually just call it Tucumán. It is the capital of the Tucumán Province. It's quite a big city. The people are very friendly and the weather is really hot. In Jujuy people are nice, but in Tucumán they're even nicer. It's also quite a dangerous city, so you need to know where to go and where not to go. My older sister is attending university there, so I go there to visit her.

AIC: *Tell us a little about your family?*

Joaquin: There are five of us, and we're very close. I have a younger and an older sister. Right now we have a German exchange student staying with us for one year and I view him as a brother. I also have a close-knit extended family. People in Argentina tend to be very family oriented.

AIC: *What did you like to do in your free time back home?*

Joaquin: Unlike in Japan, we have a lot of free time in Argentina. I studied English, play tennis, hang around with friends, go to the shopping mall, etc. I also like to play soccer, and my favourite team is Boca Juniors.

AIC: *What are your plans for the future?*

Joaquin: I'm not too sure, but I know I will go to university. During my time in Japan, I would like to learn as much Japanese as possible, meet people and make new friends, and travel around the country.

AIC: *Well, thank you very much for your time, Joaquin.*

Joaquin: You're welcome.

San Salvador de Jujuy



Life In Japan

Marriage in Japan By SEO Ayumi

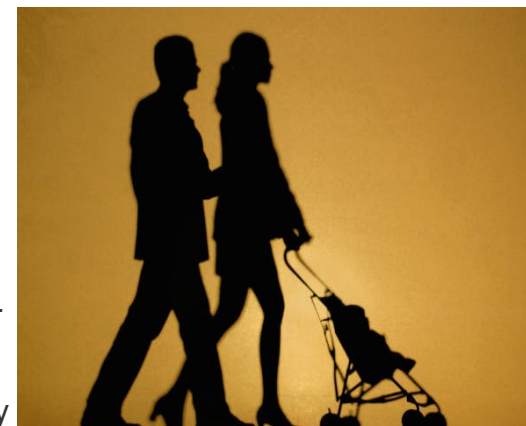
In Japan, the average age of marriage has risen year by year, while the percentage of unmarried people has also increased. Looking at the trends in 2010, the average age for first marriages is 30.5 for men and 28.8 for women. In contrast, in 1950 the average age was 25.9 for men and 23.0 for women. General factors cited for this trend are said to be higher education and social advancement of women. Some people say that it is also due to a loss of appeal for women to live with men, and vice versa.

However, I believe there is still a great deal of interest and enthusiasm for marriage among Japanese women, as the subject of marriage is almost always brought up when they get together. As from the age of 25 up to 35, one will receive white envelopes a few times a year. This is an invitation to a wedding reception. Once a couple has decided to get married, they begin to prepare for the hard work months in advance.

In recent years the general procedure of marriage first begins with an official registration as a family member, as they've probably already lived together for sometime. Then, a few months later they prepare a wedding ceremony at a church (even if they're not Christian), or a shrine, and a reception at a hotel where they invite relatives and friends. The reception lasts for around two hours. The program includes conventional formalities, such as carving the wedding cake, the bouquet toss, a candle-light service (the bride and groom go around and light a candle at each table), and the reading of a letter from the bride to her parents. Meanwhile, they change their outfit a couple of times.

For this big event, it is expected that the new couple will fight quite a lot over the various choices, such as where to have the party, how many times the bride changes dresses, how many people are invited, and so on. Furthermore, if either of two is not interested and unwilling to spend the money and energy for those kinds of things, their relationship is said to get even worse. The different tastes and sense of values between two people will surface, and they have to come to terms with the friction. In this way, by repeatedly fighting and making up, their bond seems to become much stronger over time as they overcome the hardship.

Incidentally, the reason I am writing about this topic is because I am actually going to get married soon. I had always dreamed of being a beautiful bride, like a princess in a movie, ever since I was a child; however, now I truly understand the meaning of compromise. It is thought the overall cost of a wedding in Japan is around ¥3,000,000. This includes the price of the reception hall arrangements, dresses, cuisine, flowers, etc. My partner is neither a prince on a white horse nor a millionaire who grants my every wish. And neither am I. Now that I have recognized that reality is not as sweet as I had dreamed of, I will begin to care more about things related to a long married life, rather than a party or a dress.



Hello Wildflowers

Wondering Among the Flowers Around Asahikawa

By KUDOH Hitoshi

One sunny April, a *Corydalis Coryda* calls a sleeping *Corydalis Lisa* in the snow-melted hillside floor. Whole area is starting to glow with splendid blue.

Coryda, "Wake up my dear, Lisa!"

Lisa (rubbing her eyelids), "What's up, Sis...?"

Coryda, "Look, dear. Spring has come. And the canopy of trees' leaves has not appeared yet. The time is now."

Lisa, "What do you mean by –the time?"

Coryda, "You know, we are members of spring ephemerals. The early risers of our fairyland. We have to make the most of it. Let's paint blue round here."

ezo-engosaku (蝦夷延胡索)

Corydalis ambigua family: FUMARIACEAE
common name: Yanhusuo, Blue Bleeding Heart,
Crested lark, Blue fumitory

Description: One of perennial herbs. In early spring, a shoot pokes out of the slightly humid soil still now-covered hillside from its rhizome or a seed. Soon a raceme of fumitory flower buds appears. A seed requires 4 years to bloom. First year, only a single leaf sprouts early in spring. Next year, elliptical or oval leaves appear. The leaves come out with flower buds at the 4th year. The leaves are pinnate and divergent, bluish green. Stems are slightly hairy.

Inflorescence, raceme. When it is warm enough, the buds start open. A hornlike corolla recurves its spur to point the sky. It has a room of nectar in its spur. A blue flower is bisexual, 2 cm long, consists of 4 petals, two whitish petals surround a pistil in the trumpet. Pollinated by bumblebees and many other insects, each pistil turns into a reddish green fruit of siliqua.

The pod contains several dark seeds. The capsule ripens and pop opens and the seeds spill. Finally the stalk fades out. Its black seed attaches the elaiosome at the end. The substance is rich in fats and proteins. This attracts ants. They drag and disperse them to germinate.

Edible (leaves, stems, flowers, rhizomes).

Medical (painkiller as an analgesic, heart disease, liver damage and so on. Contains tetrahydropalmatine; one of alkaloids.)

Habitat: Sunny deciduous woods, moist hillsides, in lowland to high alpine valleys of Northern Japan.



Water-colour painting of EZO-ENGOSAKU
By KUDOH Hitoshi

Butterflies of Asia

Parnassius Genus in East Asia

By KAWAI Tadao &

NISHIKAWA Noriyuki (Director of the Butterfly Society of Japan)

The Himalayas:

In the Himalayan Mountains there are 14 peaks which are 8000 meters above sea level or higher. The Himalayas are also a treasury of Parnassius genus. Parnassius genus is a small-sized butterfly of the Papilio family, with pure white and semi-transparent wings. The neat figure of *Parnassius appollo* has attracted, to begin with, the German poet, Hermann Hesse, as well as other people of the same taste from around the world. Some butterflies, such as *Parnassius acco*, inhabit places which are higher than 5000 meters above sea level.

Mongolia:

The wind-glittering prairies of Mongolia. The desert nights are unexpectedly cold. On the north slopes of the mountain range the snow-melting water of the spring becomes the undercurrent. In the circumference of the valleys that have under-flowing, there are some unexpected places which allow for a butterfly's paradise. In this environment the *Parnassius appollo*, *Parnassius nomion*, Melitaea genus, Erebia genus, and blue gossamer Lycaena are all boisterously dancing.

China, Taiwan, North Korea:

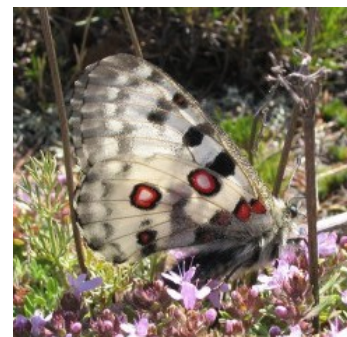
British missionaries, and European and Japanese explorers have been exploring and researching China since the days of the Ch'ing dynasty. Towards the end of the 20th century Japanese scientists researched and elucidated the Parnassius genus alpine butterflies, and then the Dryades of the Zephyrus genus (Hairstreaks 184 species), which exist primarily around Yun Nan Sheng and Sichuan Sheng. The clarification of history of habitation of these species sped up rapidly over time.

Japan:

As we well know when going on a world-wide journey, the Japanese archipelago, situated in the far of the Eurasian Continent and stretching along the Pacific Ocean, is home to numerous unique plant species. These make up the woods and forests which house a remarkably diverse species of animals and insects. Water is abundant in Japan, and it's also one of those countries with drinkable tap water. *Sasakia charonda*, *Leuhdorfia puziloi ezoensis*, *Parnassius evermanni daisetsuzanus*, and *Oeneis norma sugitanii*, are just some of the species unique to the Japanese islands and in plentiful numbers.



Sasakia charonda



Parnassius nomion



Parnassius appollo

★ *Movies ~ April* ★

*Every Wednesday is "Ladies' Day." Admission is ¥1,000 (tax included) for women at all theaters.

*The 1st day of every month is "Movie Day" in Asahikawa. Admission (tax included) is ¥1,000 for Adults, ¥800 for Senior High School Students and Under at all theaters.

★ **Cineplex 7 Asahikawa:** Nagayama 12-jo 3-chome Western Powers Nagayama / ☎ 49 – 1000

URL: <http://www.kadokawa-cineplex.co.jp/asahikawa/> (Japanese)

Directions: Take Dohoku Bus No. 66, 72 or 665 at Bus stop No. 18 in front of Feeeal Asahikawa (1-jo-dori 8-chome). Get off at "Nagayama 10 (ju)-jo 3 (san)-chome."

Now Showing

- Afro Tanaka (Japanese)
- War Horse (English)
- Liar Game - Saisei (Japanese)
- Hugo (English/Animation)
- The Iron Lady (English)
- The Help (English)
- Sherlock Holmes - A Game of Shadows (English)

Coming Soon

- The Artist (English)
- Momo he no Tegami (Japanese/Animation)
- Titanic (English 3D)
- John Carter (English)
- Spec (Japanese)
- Thermae Romae (Japanese)
- Kamen Raider - Superhero Taisen (Japanese)

★ **Dinos Cinemas:** Taisetsu-dori 5-chome / ☎ 21 – 1218

URL: http://www.geodinos.jp/cinema/asa_schedule.php?StoreID=5 (Japanese)

Directions: Take Dohoku Bus No. 61, 62, 67 or 667 at Bus stop No. 18 in front of Feeeal Asahikawa (1-jo-dori 8-chome). Get off at "Nippon Seishi mae."

Now Showing

- War Horse (English)
- Ultra Man Saga (Japanese)
- Bokkyu (Japanese)
- Welcome Home, Hayabusa (Japanese)
- Ouran High School Host Club (Japanese)
- Sherlock Holmes - A Game of Shadows (English)
- Puss in Boots (English/Animation)
- Star Wars Episode 1 - Phantom Menace (English 3D)

Coming Soon

- Conan - The 11th Striker (Japanese/Animation)
- Thermae Romae (Japanese)
- Kamen Raider - Superhero Taisen (Japanese)
- Spec (Japanese)
- Momo he no Tegami (Japanese/Animation)
- Titanic (English 3D)
- John Carter (English)

Movie schedules change often. Please call the theater for confirmation and details.

Notice From The Ministry of Internal Affairs & Communication

A new resident Registration System for Foreign Residents will begin in July 2012 (exact date of implementation will be announced at a later date). The new system will replace the current Alien Registration System. In accordance with partial amendment of the Basic Residents Registration Act, foreign residents will be eligible to receive a Residence Record (*juminhyo*). This will make administrative procedures at your local government simpler and more convenient.

For more information visit :

http://www.soumu.go.jp/main_sosiki/jichi_gyousei/c-gyousei/zairyu.html

Also, you may pick up a free brochure outlining the new guidelines from the Asahikawa International Center (Feeeal Asahikawa 7F 1-jo-dori 8-chome).



Fun Fridays

Leaders coordinate a variety of interesting activities such as games, discussions, introductions, and quizzes. Meet new people, relax, relate, and communicate through English.

Dates: *Spring Session:* April 13th, May 11th, June 8th

Time: 1:00 ~ 3:00pm & 6:30 ~ 8:30pm, 2nd Friday of the month

Location: Asahikawa International Center, Common Meeting Room (1) Feeeal Asahikawa 7F 1-jo-dori 8-chome

Charge: ¥1,500 for 3 months (Free for volunteer leaders)

The AIC offers many services to make your life in Asahikawa more enjoyable. Here are just a few:

Volunteer Guide: Volunteers are registered to help translate and interpret.

Event Volunteer: The AIC has many exciting events planned for this year, including Friendship Parties and a Halloween Party. Why not become a volunteer and help plan these events?

Homestay: Families are registered to welcome you into their homes for an overnight stay or just for an afternoon visit.

For further information or to register, please contact AIC.

AIC Computers: The AIC has two computer available for public use free of charge at the Asahikawa International Center (Feeeal Asahikawa 7F 1-jo-dori 8-chome). There is a time limit for use and you must register prior to use. Please feel free to come by and use it anytime as well as check out some of the other services and activities available at the AIC.

Spread the Word...

Contribute to the AIC newsletter and share any interesting information you may have with other readers. You may write on any topic including, items to buy or sell, offers for culture/language exchanges, or write an essay about your life in Asahikawa or your hometown. The article should not be profit related! Please send your submissions to us at the AIC.



Asahikawa International Committee, International Affairs Division
Asahikawa International Center Feeeal Asahikawa 7F, 1-jo-dori 8-chome, Asahikawa 070-0031
Tel: (0166) 25-7491 Fax: (0166) 23-4924
E-mail: cir_kokusai@city.asahikawa.hokkaido.jp

****The opinions expressed in the essays are those of the writers and do not necessarily reflect the opinions of the Asahikawa International Committee or the City of Asahikawa.****