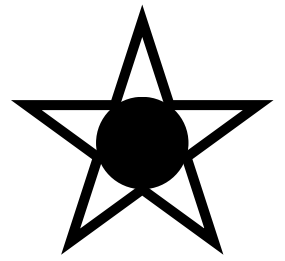


# ASAHIKAWA INFO



February 2024, Volume 327

## Hokkaido News Top 5

February 2024, compiled by the AIC

### **Asahikawa Airport Experiences Delays and Cancelled Flights (1/4)**

On January 2nd, 18:00, a major accident occurred at the Haneda Airport runway where Japanese Airline flight 516 coming from New Chitose Airport carrying 379 passengers and crew came into collision with a Japan National Coast Guard plane. 5 of the 6 crew members from the coast guard plane had suffered casualties while all 379 passengers were able to miraculously evacuate the plane safely due to the proper conduct by the plane's crew. This tragic event has resulted in major delays and cancellations for flights going through Haneda, which has impacted many travelers during the New Year holiday from various airports including Asahikawa airport.

### **Coming of Age Ceremony; Happy 20 Year-Olds Bursting with Smiles (1/8)**

On January 7th, many young 20 year-olds in the Kamikawa area had a Coming of Age ceremonies. These ceremonies brought many youths wearing their traditional Japanese garment and suits in order to celebrate reaching adulthood and to open a brand new beginning; a new chapter for many of them. During the ceremony, many young people were able to meet old friends, re-ignite connections, and discuss their aspirations for the coming future.

### **Believing in Themselves, Students Go All Out for Their Dreams (1/14)**

The Common Test for University Admissions had recently begun on January 13th, where 1,400 students from the Kamikawa area were spread out in three locations : Hokkaido University of Education in Asahikawa, Asahikawa Medical University, and Nayoro City University where many were taking their college entrance exams in hopes to get into their dream universities. For instance, in Asahikawa Medical University, many high school educators were offering positive words of encouragement as they were receptioning test takers. Many subjects were being tested for the Common Test from Japanese literature to geography and math. Many students had spent long hours studying in hopes receiving high marks and entering their dream school.

### **Registered Support Agency Helping Foreigners (1/24)**

The Kita Technical Academy has received recognition to be a registered support agency for foreign technical workers seeking employment in Japan. As a registered support agency, they will be able to provide employment assistance for foreign skilled workers by helping them find jobs and providing additional support after employment. This will surely help foreign residents get jobs with fair contracts while supporting local businesses in need of technical employees in industries such as hospitality, agriculture, and caregiving.

### **Asahikawa Medical University Disaster Medical Assistance Team Provides Support in Wajima (1/25)**

Asahikawa Medical University's Disaster Medical Assistance Team (DMAT) consisting some of the hospital's nurses and doctors were dispatched to Wajima in the Noto Peninsula to provide disaster aid and support after the recent earthquake that took place during January 1st. The nurses and doctors provided a wide variety of healthcare support from caregiving to the elderly and blood clot prevention to caring for patients infected with coronavirus. Many members of DMAT were surprised to see the locals' positive attitudes despite being struck by a disaster. This positive attitude from the people of Wajima helped many of the DMAT to work harder in providing care.

For further information or to register for events, contact:

Asahikawa International Committee (AIC)(SUGANO Ayumi, SAITO Emmy, or MABILANGAN John)

**Location:**

International/City Affairs Division, Tourism, Sports and International/City Affairs Dept.

**Address:**

Asahikawa International Center Feeeal  
Asahikawa 7F, 1-jo-dori 8-chome,  
Asahikawa 070-0031

Tel: (0166) 25-7491

Fax: (0166) 23-4924

Email: cir\_kokusai@city.asahikawa.lg.jp



## Inside this issue...

- Hokkaido News Top 5.....1
- Upcoming Events.....2
- Asahikawa Winter Festival.....4
- Movies.....6
- Bulletin Board.....8

# Upcoming Events

Upcoming events and activities in Asahikawa and the rest of Hokkaido



## Sapporo Snow Festival

札幌雪祭り

*The nation's largest snow festival is coming this February! Come checkout the various ice and snow sculptures throughout Hokkaido's capital city!*

### Event Details

**Date:** 2/4(Sunday) ~ 2/11 (Sunday)

**Location:** Odori Park, Ekimae-dori, Minami 1-jo-dori

**For more information:** <https://www.snowfes.com/>

## Asahikawa Winter Festival

旭川冬まつり

*Asahikawa's Winter Festival brings ice and snow sculptures by artists from all over! Experience a winter wonderland right at your local city!*

### Event Details

**Date:** 2/7 (Wednesday)~ 2/12(Monday)

**Time:**

**Location:** From Miyamae-dori to Tokiwa Park

**For more information:** <https://asahikawa-winterfes.jp/>



## Kitasaito Winter Garden

北彩都あさひかわ冬のガーデン

*Experience outdoor ice skating right and front of the station with rentals and entrance fee all for FREE!*

### Event Details

**Date:** Open until 2/12 (Sunday)

**Location:** Asahikawa Station

**Admission:** FREE

**Inquiries:** Kitasaito Asahikawa Winter Garden Office 080-2871-1412

## Snow Lights Zoo

雪あかりの動物園

*Come see Asahiyama Zoo covered in beautiful lights this coming February. The handmade drop candles will only be here for 2 days making this visit extra special!*

### Event Details:

**Date:** 2/10(Saturday)~2/12(Monday/holiday)

**Time:** 15:30~20:30

**Location:** Asahiyama Zoo (Kagura 4-jo 7-chome 1-52, Asahikawa)

**Admission:** Normal Admission ¥1,000 | Local Admission ¥700



# Upcoming Events



**Hokkaido Sports Festival 2024**  
北海道大運動大会 2024

Watch the Hokkaido Sports Festival for a day full of competitive fun! From Team Jump Rope to the T-Rex race, thrilling competition for a very exciting prize!

**Date:** 2/18 (Sunday)

**Time:** 9:00-16:30

**Location:** Sapporo Dome (1 Hitsujigaoka, Toyohira-ku, Sapporo)

**Registration Site:** <https://h-daiundoukai.jp/>

**For queries:** 011-210-5732

**Children (Chibikko) Ski Area (Starukhin Baseball Stadium)**

ちびっこスキー場 (スタルヒン球場)

Experience winter joy with the family! Chibikko Ski area is open again this year for some fun tube sliding for the kids! The best part is that it is FREE!

**Event Details**

**Date:** Open until 2/29 (Thursday)

**Time:** 10:00 -16:00

**Location:** Hanasaki Sports Park (Starukhin Baseball Stadium)  
(Hanasakicho 3-chome, Asahikawa)

**Admission:** FREE

**For more information :** <http://www.asahikawa-park.or.jp/webpage/ohter/winter-facilities.html>



**Hanasaki Sports Park Skating Rink**

花咲スポーツ公園スケート場

Zoom on ice at Hanasaki Sports Park! This wide ice skating rink leaves an abundance of room for you, your friends, and your family!

**Date:** Open until 2/29 (Thursday)

**Time:** 10:00~20:00

**Location:** Hanasaki Sports Park (Hanasakicho 3-chome, Asahikawa)

**Admission:** ¥220 (Adults), ¥150 (High School),  
FREE (Middle School students and under)

**For more information :** <http://www.asahikawa-park.or.jp/webpage/ohter/winter-facilities.html>

**44th Vasaloppet Japan**

第44回 パーサーロペット・ジャパン

Experience cross-country skiing

**Event Details**

**Date:** 3/9 (Saturday)~3/10(Sunday)

**Registration:** Until 2/12 (Monday)

**Time:** 10:00~19:00 (18:00 on the 12/24)

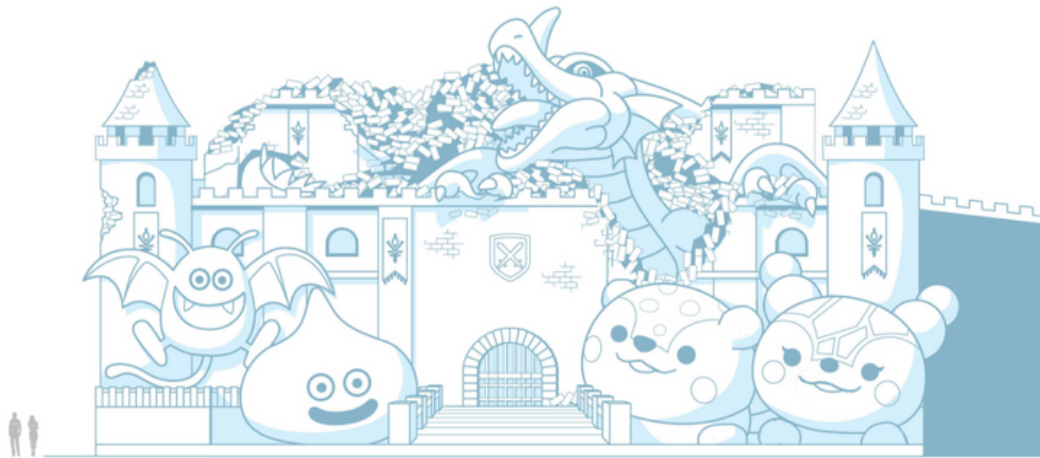
**Location:** Kitasaito Designated Ski Site & Riverside Course

**For details :** <https://vasaloppet.jp/index.html>



# ASAHIKAWA WINTER FESTIVAL

Translated and sourced from [asahikawa-winterfest.jp](http://asahikawa-winterfest.jp)  
by John Mabilangan



©旭川市 ©ARMOR PROJECT/BIRD STUDIO/SQUARE ENIX



## Intro

Every year, the city of Asahikawa hosts Japan's second largest Winter Festival where many visitors from all over Japan and the globe come to experience the wonders the festival and the city has to offer.

This year's 65th Asahikawa Winter Festival will be a collaboration with the renown Bandai game "Dragon Quest" where festivalgoers will be able to see the Dragon Quest inspired snow sculpture as well as enjoy Dragon Quest themed merchandise and food.

## History of the Asahikawa Winter Festival

In January 1946, the police department at the time sought to promote road snow removal for traffic safety, however many struggled to dispose of the piles of accumulated snow. At that time, the head of Asahikawa's tourism department, Satou Monji, took advice from Asahikawa born and raised sculptor Katou Akikiyo to create snow sculptures from the abundance of snow. From that proposition, the Asahikawa Winter Festival was born.

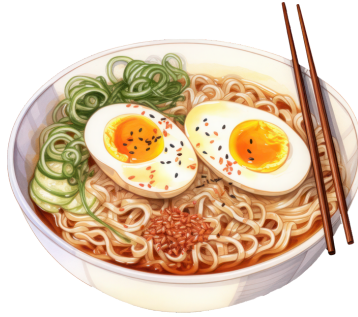
From February 1947, the Hokkai Winter Festival and the Iyomante (Bear Festival) by the Ainu people had begun. From 1948, city residents had begun the tradition of making snow sculptures. Residents of Asahikawa

had continued the tradition throughout the years and in 1951 a queen of winter was decided by the Asahikawa Event Coordination Committee. At the time, this was called the "Asahikawa Snow Festival". However, due to the spread of the common cold as well as the change of event coordinator, it was not held for 3 years.

By the autumn of 1959, many residents were calling for the revitalization of this tradition. This in turn resulted to the first official Asahikawa Winter Festival. Since then, the festival has continued throughout the years, growing and becoming more popular with each coming year.

For more information regarding the Winter Festival, check out the website below (Japanese)  
Asahikawa Winter Festival Official Website: <https://asahikawa-winterfes.jp/language/>

## Winter Food Market : More Than 30 Food & Drink Stalls



The Asahikawa Winter Festival is back at it again with its Winter Food Market. There you can enjoy a wide variety of dishes, drinks, and snacks from more than 30 different stalls from local and visiting vendors. Here there are many options from locally sourced shoyu ramen to Nepalese-style curry! In addition, there are even special edition steamed buns, “Slime Bun”, from the role playing game Dragon Quest to enjoy for a limited time!

### Limited Edition Asahikawa Goods and Dragon Quest Merchandise



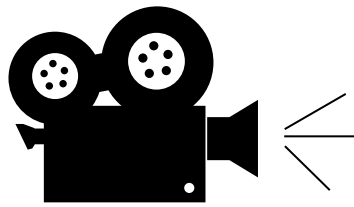
This year, there will be a variety of local shops and stores selling Asahikawa goods and Dragon Quest official merchandise spread throughout the festival and city. In addition to Asappi and Yukkirin pin badges, bags, and pens, there are also limited edition Dragon Quest pin badges, cups, and other goods available.

### Ice Sculpture Competition and Various Fun Attractions



The Winter Festival brings a variety of attractions and sights to see this year. For instance, the Asahikawa Ice Sculpture Competition invites sculptors from around Japan and the world to create beautiful sculptures to be spread out in Heiwa Dori Shopping Street, which will be beautifully illuminated throughout the duration of the festival. Furthermore, the festival offers some exciting attractions fun for the whole family! Besides the main snow sculpture in Tokiwa Park, the venue offers a snow slide called the “Hankyu Slider”, snow tubing, snow rafting, snow maze, ziplining, and many more!

For more information regarding the Winter Festival, check out the website below (Japanese)  
Asahikawa Winter Festival Official Website: <https://asahikawa-winterfes.jp/language/>



# MOVIES IN FEBRUARY

*\*The 1st day of every month is Movie Day in Asahikawa. Admission (tax included) is ¥1,100 for Adults, ¥800 for High School Students and Under at all theaters.*

**Aeon Cinema Only:** Every Monday is Happy Monday! Admission is ¥1,100 (tax included) for all.

**Cineplex 7 Asahikawa Cinemas Only:** Every Wednesday is Ladies' Day! Admission is ¥1,100 (tax included for women at all theaters).

**CinePlex 7 Asahikawa:** Nagayama 12-jo 3-chome Western Powers Nagayama

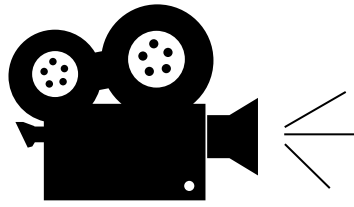
**URL:** <http://www.unitedcinemas.jp/asahikawa/index.html> (Japanese)

## Now Showing

- Spider-Man: Into the Spider-Verse (English 4DX/Anime)
- Silent Love (Japanese)
- Mobile Suit Gundam SEED Freedom (Japanese 4DX/Anime)
- Poor Things (English/R18+)
- Love You as the World Ends: Final (Japanese/PG12)
- Golden Kamuy (Japanese/PG12)
- Aquaman and the Lost Kingdom (English 4DX)
- Aru Tozawareta Yuki no Sanso de (Japanese)
- Kizumotogatari: Koyomi Vamp (Japanese/PG12/Anime)
- Expend4bles (English/R15+)
- Spy x Family Code: White (Japanese/Anime)
- Wish (English 4DX/Anime)
- I Wish I Could Meet You Again on the Hill Between That Flower Blooms (Japanese)
- Rascal Does Not Dream of a Knapsack Kid (Japanese/Anime)
- Kitaro Tanjo: Gegege no Nazo (Japanese/PG12/Anime)
- Godzilla Minus One (Japanese 4DX)
- How Do You Live? (Japanese/Anime)

## Coming Soon

- Demon Slayer: To the Hashira Training (Japanese/PG12/Anime) 2/2
- Spider-Man: Across the Spider-Verse (English 4DX/Anime) 2/2
- Perfect Days (Japanese) 2/9
- Migawari Mission (Japanese) 2/9
- The Color Purple (English) 2/9
- Haikyuu the Movie: The Battle at the Garbage Dump (Japanese/Anime) 2/16
- Beau is Afraid (English/R15+) 2/16
- Matched (Japanese) 2/23
- Madame Web (English) 2/23
- Next Goal Wins (English) 2/23
- Guy Ritchie's the Covenant (English) 2/23
- Doraemon: Nobita's Earth Symphony (Japanese/Anime) 3/1
- Argylle (English) 3/1
- Darwin's Amazing Animals: Dinosaur Movie2 (Japanese) 3/8
- My Home Hero (Japanese/PG12) 3/8
- Dune: Part Two (English) 3/15
- Migration (Japanese, English/Anime) 3/15
- Lovesick Ellie (Japanese) 3/15
- Henna Ie (Japanese) 3/15
- Oshiri Tantei: Saraba Itoshiki Aibou (Japanese/Anime) 3/20
- Ghostbusters: Frozen Empire (English) 3/29
- Blue Lock - Episode Nagi - (Japanese/Anime) 4/19



# MOVIES IN FEBRUARY

*\*The 1st day of every month is Movie Day in Asahikawa. Admission (tax included) is ¥1,100 for Adults, ¥800 for High School Students and Under at all theaters.*

**Aeon Cinema Only:** Every Monday is Happy Monday! Admission is ¥1,100 (tax included) for all.

**Cineplex 7 Asahikawa Cinemas Only:** Every Wednesday is Ladies' Day! Admission is ¥1,100 (tax included for women at all theaters.

**Aeon Cinema:** Miyashita-dori 7-chome / 0166-74-6411

**URL:** [cinema.aeoncinema.com/wm/asahikawa](http://cinema.aeoncinema.com/wm/asahikawa) (Japanese)

## Now Showing

- Poor Things (English/R18+)
- Mobile Suit Gundam SEED Freedom (Japanese/Anime)
- Love You as the World Ends: Final (Japanese)
- Silent Love (Japanese)
- Golden Kamuy (Japanese/PG12)
- Kiseki no Ko Yumeno ni Mau (Japanese)
- Aru Tozawareta Yuki no Sanso de (Japanese)
- Aquaman and the Lost Kingdom (English, Japanese)
- Expend4bles (Japanese/R15+)
- Detective Conan vs. Kaito Kid (Japanese/Anime)
- Spy x Family Code: White (Japanese/Anime)
- Wish (English, Japanese/Anime)
- PAW Patrol: The Mighty Movie (Japanese/Anime)
- I Wish I Could Meet You Again on the Hill Between That Flower Blooms (Japanese)
- Wonka (English, Japanese)
- Kamui no Uta (Japanese/PG12)
- Kitaro Tanjo: Gegege no Nazo (Japanese/PG12/Anime)
- Godzilla Minus One (Japanese 4DX)
- How Do You Live? (Japanese/Anime)

## Coming Soon

- Perfect Days (Japanese) 2/2
- Jeanne Du Barry (English) 2/2
- Damon Slayer: To the Hashira Training (Japanese/PG12/Anime) 2/2
- Migawari Mission (Japanese) 2/9
- Five Nights at Freddy's (English) 2/9
- The Color Purple (English) 2/9
- Haikyu the Movie: The Battle at the Garbage Dump (Japanese/Anime) 2/16
- Take Me to Another Planet (Japanese) 2/16
- Madame Web (English) 2/23
- Ultraman Blazar: Tokyo Kaiju Showdown (Japanese) 2/23
- The Roundup: No Way Out (Korean/PG12) 2/23
- Doraemon: Nobita's Earth Symphony (Japanese/Anime) 3/1
- Argyll (English) 3/1
- My Home Hero (Japanese/PG12) 3/8
- Shimajiro the Movie: The Rainbow Carnation of Miracle Island (Japanese/Anime) 3/8
- Dune: Part Two (English) 3/15
- Migration (Japanese/Anime) 3/15
- Dead Dead Demons DeDeDeDe Destruction Zenpen (Japanese/Anime) 3/22
- Blue Lock - Episode Nagi - (Japanese/Anime) 4/19
- Dead Dead Demons DeDeDeDe Destruction Kohen (Japanese/Anime) 4/19

# AIC BULLETIN BOARD

## Need Assistance?



If you ever find yourself in need of assistance, know that the Hokkaido Foreign Resident Support Center is there for you! They are able to provide you with consultation services in various languages (Japanese, English, Chinese, Korean, Tagalog, Vietnamese, Russian, Indonesian, Thai, Nepalese, Burmese) on residence procedures, employment, medical care, welfare, childbirth, childcare, education, and more for FREE! Call them at **011-200-9595** or go to: [www.hiecc.or.jp/soudan](http://www.hiecc.or.jp/soudan)



Interesting activities such as quizzes, discussions, songs, games, handicrafts and much more, all in English! Come meet new people, relax and relate on Fun Fridays!

**Dates:** February 9th & 22nd (rescheduled due to national holiday on 23rd), March 8th & 22nd

**Times:** 1:00pm-2:00pm ~Afternoon~ 2nd and 4th Friday of the month  
6:30-8:30pm ~Night~ 2nd Friday of the month

**Location:** Asahikawa International Center, Common Meeting Room (1)  
(Feeeal Asahikawa 7F 1-jo-dori 8-chome)

**Charge:** ¥1,500 for 3 months (Free for volunteer leaders)

The AIC offers many services to make your life in Asahikawa more enjoyable. Here are just a few:

**Volunteer Guide:** Volunteers are registered to help translate and interpret.

**Event Volunteer:** The AIC plans many exciting events throughout the year, such as Friendship Parties. Why not become a volunteer and help plan these events?

**Homestay:** Families are registered to welcome you into their homes for an overnight stay or just an afternoon visit.



The Asahikawa International Center (Feeeal Asahikawa 7F 1-jo-dori 8-chome) has free Wi-Fi available for public use. If you reside in Asahikawa, registration for a user card is required. Please feel free to come by anytime, as well as check out some of the other services and activities available at the Asahikawa International Center!

## Spread the Word...

Contribute to the AIC newsletter and share any interesting information you may have with other readers. You may write on any topic including: items to buy/shell, offers for culture/language exchange, or write an essay about your life in Asahikawa or your hometown. The article should not be profit-related! Please send your submissions to us at the AIC.



Asahikawa International Committee

Asahikawa International Center Feeeal Asahikawa 7F, 1-jo-dori 8-chome,  
Asahikawa 070-0031

TEL: (0166)25-7491 FAX: (0166)23-4924

E-mail: [cir\\_kokusai@city.asahikawa.hokkaido.jp](mailto:cir_kokusai@city.asahikawa.hokkaido.jp)

**\*\*The opinions expressed in the essays are those of the writers and do not necessarily reflect the opinions of the AIC or the City of Asahikawa.\*\***