

Inside this issue...

Hokkaido News Top 5

Upcoming Events

Hello, Asahikawa!

Spotting Sam

Let's Use JSL!

Movies

Bulletin Board



For further information or to register for events, contact:

Asahikawa International Committee (AIC)
(SUGANO Ayumi, SAITO Emmy, or GONZALEZ Gabriel)

Location:

International/City Affairs Division,
Tourism, Sports and International/City
Affairs Dept.

Address:

Asahikawa International Center Feeeal
Asahikawa 7F, 1-jo-dori 8-chome,
Asahikawa 070-0031

Tel: (0166) 25-7491

Fax: (0166) 23-4924

Email: cir_kokusai@city.asahikawa.lg.jp

Hokkaido News Top 5

February 2023 - March 2023, compiled by the AIC

Iwaya Inc. to Begin Space Sight-Seeing in December, (2/22)

The company Iwaya Inc. has opened applications for those who wish to ride in the world's first space sight-seeing balloon. It will fly up to an altitude of 25 km into the stratosphere, allowing for a viewing of the entire world from above. Capacity in the vessel is limited to five people. If everything moves ahead smoothly, they will begin rides in December for ¥24,000,000 per person. Those eligible are: ages 15-65, height of 150-190 cm. No special training necessary. If interested, please go to <https://open-universe-project.jp/oubo/> to apply.

Aibetsu Partners with Company to Solve Vacant Housing Problem, (2/23)

The town of Aibetsu has agreed to work with the company O-Yen City Development to assist in the distribution of vacant houses. The business manages "Everybody's O-Yen Property," a support website for voluntary conveyance of real estate. It began operations in 2019, posting vacant properties for municipalities that were unable to afford demolition costs and mediating contracts for those who wish to acquire them. They have dealt with around 1,000 cases, 90% of which ended in contract signings.

Ainu Remains to Be Returned in May, (3/5)

The remains of four Ainu bodies that were being preserved in Australian museums will be returned to Japan in May. Originally exchanged for aboriginal remains from Australia, the remains of one individual will be returned to the Enciw Association of the Bereaved, and the remaining three will be given to the Hokkaido Ainu Association after the Japanese government received requests of retrieval from Ainu groups and consulting specialists from the Ministry of Education, Culture, Sports, Science and Technology.

The 43rd Vasaloppet Japan Comes to a Close, (3/14)

Asahikawa bid farewell to its 43rd hosting of Vasaloppet Japan, a cross-country ski and ski walking festival. After four years of being put on hold, participants from all over were able to enjoy the winter sports in events held over two days on the city's special course set up alongside the Chubetsu River in the Kitasaito District. Good weather brought smiling faces all around, especially on Kentaro Ishikawa (29), who won overall in both the super sprint and men's 51-km events.

Pippu Middle School Get 'Winter' Strawberries in Their Lunches, (3/18)

To highlight their image as the "Town of Strawberries," Pippu provided "winter" strawberries to grades 1-6 at Pippu Middle School as a part of their school lunches on 3/17. NexPeaK has cultivated its strawberries since 2019 and distributed two per child, 8 kg in total. They were a hit with the children who loved its sweetness. "We hope to get people to try a new local flavor," one cultivator from NexPeaK stated. Grades 7-9 were also provided strawberries earlier on 3/3.

Read the latest issue of Asahikawa Info and get to know the AIC on our website:

<http://asahikawaaic.jp/en/>

Chagall in Printmaking

シャガール・イン・プリント

Discover the poetic artistry of Marc Chagall through this exhibition displaying examples of his many prints depicting love, suffering, and the experience of the human soul.

Date: Until 4/9 (Sunday)

Time: 9:30-17:00 (Entry ends at 16:30), Closed: Mondays

Place: Hokkaido Museum of Modern Art (Sapporo, Chuo-ku, Kita 1-jo Nishi 17-chome)

Admission: General ¥510(*¥420), High school and university student ¥250(*¥170),

Middle school student and under FREE, those 65 and older FREE (*Groups of 10+)

For more information, contact: 011-644-6882 (Hokkaido Museum of Modern Art)

DECOBOCOMPOSITION

デコボココンポジション

Dive into the experimental mind of Kotaro Migishi in this exhibition of works expressing the topsy-turvy nature of life and its many highs and lows.

Date: Until 4/18 (Tuesday)

Time: 9:30-17:00 (Entry ends at 16:30), Closed: 4/1 (Saturday) - 4/6 (Thursday), Mondays

Place: Migishi Kotaro Museum of Art, Hokkaido (Sapporo, Chuo-ku, Kita 2-jo Nishi 15-chome)

Admission: General ¥510(*¥420), High school and university student ¥250(*¥170),

Middle school student and under FREE, those 65 and older FREE (*Groups of 10+)

For more information, contact: 011-621-7000 (Migishi Kotaro Museum of Art, Hokkaido)

Hokkaido's Ammonites: Coniacians

北海道のアンモナイト コニアシアン編

Take a step back in time and come face to face with the prehistoric era in this exhibition showing off samples of Hokkaido's many fossilized ammonite shells.

Date: Until 5/7 (Sunday)

Time: 9:00-17:00 (Entry ends at 16:30), Closed: Mondays (The following day if Monday is a holiday)

Place: Mikasa City Museum (Mikasa, Ikushunbetsunishiki-cho 1-212-1)

Admission: General ¥450(*¥360), Elementary and middle school student ¥150(*¥120) (*Groups of 20+)

For more information, contact: 01267-6-7545 (Mikasa City Museum)

Akanto Un Kotan: Regions, The Ainu Culture of Lake Akan

アカント ウン コタン ～阿寒湖畔のアイヌ文化～

Learn about the history of Ainu culture near Lake Akan and how the region has borne a new culture in its attempts to balance tradition with modern-day tourism.

Date: Until 5/14 (Sunday)

Time: 9:00-17:00, Closed: Mondays (The following day if Monday is a holiday)

Place: National Ainu Museum (Shiraoi, Wakakusa-cho, 2-chome 3-1)

Admission: Adult ¥1,200(*¥960), High school student ¥600(*¥480), Middle school student and under FREE (*Groups of 20+)

For more information, contact: <https://nam.go.jp/> (National Ainu Museum)



Yukino Ichikawa: 30th Anniversary Concert

市川由紀乃 三十周年コンサート ソノサキノユキノ

Listen to the musical stylings of Yukino Ichikawa as she sings an anniversary concert alongside a special band as her accompaniment in this reflective musical performance.

Date: 4/11 (Tuesday)

Time: (Opens) 13:30, (Starts) 14:00

Place: Asahikawa Civic Culture Hall, Large Hall (Asahikawa, 7-jo-dori 9-chome)

Admission: (S-seats) ¥6,000, (A-seats) ¥3,000

Ticket Office: Ticket Pia (P-code: 230-879), Lawson Ticket (L-code: 11607), Doshin Playguide (0570-00-3871), Secoma Ticket (Secoma-code: E23041101), Gyokkodo Aeon Mall (0166-73-8801), Coach & Four Asahikawa (0166-76-4002)

For more information, contact: 011-533-7711 (A-DASH)



Shoko Yomogizawa: Gathering

艾沢祥子 集積する時間

This exhibition will be based around the work of Shoko Yomogizawa, a Hokkaido-born artist that deals with the theme of life and the ethereal nature of our sensations and impressions through multi-media.

Date: From 4/15 (Saturday) until 6/11 (Sunday)

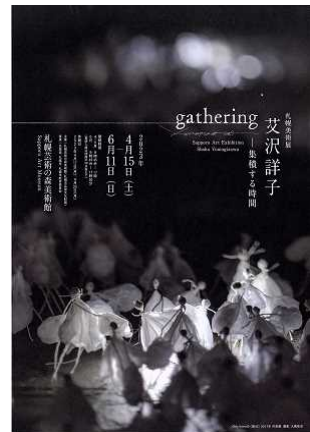
Time: [April-May] 9:45-17:00 (Entry ends at 16:30), [June] 9:45-17:30 (Entry ends at 17:00); Closed: 4/17 (Monday), 4/24 (Monday)

Place: Sapporo Art Museum (Sapporo Art Park, 2-chome 75-banchi)

Admission: General ¥1,100(*¥900), High school and university student ¥800(*¥660), Elementary and middle school student ¥500(*¥420), Elementary school student and under FREE, those 65 and over ¥900(*¥740) (*Groups of 20+)

Ticket Office: Doshin Playguide, Daimaru Fujii Central, Sapporo Community Plaza Ticket Center

For more information, contact: 011-591-0090 (Sapporo Art Museum)



Fascinating Modern Western Paintings: From Monet to Renoir to Picasso and Matisse

魅惑の西洋近代絵画 〜モネ、ルノワールからピカソ、マティスまで〜

Take the plunge into the world of the Impressionists, Post-Impressionists, Fauvists and more in this exhibit that explores the world's neverending fascination with modern Western painting.

Date: From 4/15 (Saturday) until 6/25 (Sunday)

Time: 9:30-17:00 (Entry ends at 16:30), Closed: Mondays

Place: Hokkaido Asahikawa Museum of Art (Asahikawa, inside Tokiwa Park)

Admission: General ¥1,200(*¥1,000), High school and university student ¥700(*¥500), Middle school student ¥400(*¥300), Elementary school student and under FREE [*Groups of 10+ or pre-sale (ends 4/14)]

Ticket Office: Hokkaido Asahikawa Museum of Art, Asahikawa Fukido, Lawson Ticket (L-code: 12372), 7-ticket (7-code: 098-953), Ticket Pia (P-code: 686-342), Seico Mart (Secoma-code: D23041502), Sapporo Doshin Playguide, Doshin Playguide Online Store

Admission: Contact theater for membership fee

For more information, contact: 0166-25-2577 (Asahikawa Civic Theater)



Trick X Illusion!

トリック×イリュージョン!

Don't let your eyes play tricks on you in this exhibit introducing a more humorous side of art: illusion! Artists from a wide array of mediums and historical backgrounds will be on display.

Date: From 4/22 (Saturday) until 6/11 (Sunday)

Time: 9:30-17:00 (Entry ends at 16:30), Closed: Mondays

Place: Hokkaido Museum of Modern Art (Sapporo, Chuo-ku Kita 1-jo 17-chome)

Admission: General ¥1,700(*¥1,500), High school and university student ¥1,000(*¥800), Middle school student ¥700(*¥500), Elementary school student and under FREE [*Groups of 10+ or pre-sale (ends 4/21)]

Ticket Office: Doshin Playguide Online Store, Lawson Ticket (L-code: 11823), 7-ticket (7-code: 098-948), Ticket Pia (P-code: 686-343), Seico Mart (Secoma-code: D23042202)

For more information, contact: 011-644-6882 (Hokkaido Museum of Modern Art)



Asahikawa Info

AIC: Please tell us about yourself and where you are from.

Carly: My name is Carly and my hometown is Minneapolis, Minnesota, USA. Minneapolis is actually colder than Asahikawa, but it snows less there! I'm 30 years old, and before I came to Japan, my job was in corporate sustainability. I worked for several large multinational companies, helping them to make sure the ingredients and materials used in their products are sustainable. My specialty was in sustainable agriculture, so between the beautiful snowy weather and the vibrant farm fields of Hokkaido, I feel right at home!

AIC: How did you first get interested in Japan?

Carly: What's not to love about Japan? One of my favorite things is how beautiful the nature is here. It's amazing to me that I can see volcanoes, oceans, mountain ranges, islands, rivers, deep valleys, flat farmland, dense forests, and sprawling fields of flowers all in one weekend if I wanted to. I



Name: Carly Hall

Home Country: USA

Interviewed: 2023/2/23

If you live in Asahikawa, or are just passing through and would like to be interviewed for "Hello, Asahikawa!", email us at:

cir_kokusai@city.asahikawa.hokkaido.jp

Hello, Asahikawa!

also love that I can get around easily with public transportation like the JR, and I almost never see litter on the ground, even in a bigger city like Sapporo or Asahikawa! There are so many beautiful places in this world, but Japan is definitely on the top of the list.

AIC: Is this your first time in Japan? How long have you been in Japan?

Carly: I moved to Chitose in July 2022, so I am still settling in here. Before that, I took a vacation to Japan and I visited, Tokyo, Osaka, Kyoto, Nara, Koyasan, Takayama, and Kanazawa. Since moving here, I've been slowly exploring Hokkaido as much as I can. Last weekend I took a trip that brought me in a giant circle all over the island. I feel proud to say I've driven across the whole prefecture now!

AIC: What brings you to Asahikawa in particular?

Carly: I wanted to check out Hokkaido's second largest city. Also, I have a couple of friends that live here. I love to wake up early and catch the first train to Sapporo, then take the highway bus up to Asahikawa -- it's so easy to do. Once in a while, I will drive there instead and stop in Furano, Biei, and Higashikawa along the way. There are so many things to see and do both in and outside of Asahikawa.

AIC: What kind of work do you do?

Carly: I am an Assistant Language Teacher. I teach English at a high school in Chitose. School life in Japan is so different from my experience in high school in the US. Sometimes I think my students teach me more than I teach them! I am constantly amazed at how bright, kind, and determined they are.

AIC: What are your hobbies? What do you like to do in your free time?

Carly: Lots of things! I like hiking and swimming laps, skiing in the winter, and taking long walks around the neighborhood in the summer. I love to try new restaurants with my friends (any recommendations for me?) and chatting with local people over coffee. My passion is traveling, so I also spend quite a bit of time planning for my next big trip. I'm still a beginner at Japanese, but I've been studying and I'm slowly improving. I'm even trying a new hobby- broomball! There's a group of people in Tomakomai that would love to teach anyone how to play this awesome sport, so come and check it out (and practice your English with us while you're at it!).

AIC: Do you have any favorite Japanese foods?

Carly: My students ask me this question all the time, so I'll give you the standard answer: *gyoza* and *matcha*!!! (Not at the same time, of course.)

AIC: Any places you would recommend to others (restaurants, sight-seeing, etc.)?

Carly: There are two places that really stood out to me after several visits to Asahikawa. The first is a neat little bar called あそびbar PANDORA. I like it because there are so many board games there to play, and the staff are so kind. If my friends and I can't understand the instructions in Japanese, the staff will try their best to help out. Also there are a lot of friendly people, a nice atmosphere, and it's just a great place to hang out. My second recommendation is a farm-to-table restaurant called 四つ葉のクローバー. It's very vegetable forward but even if you are a meat-lover, I think there is definitely something for everyone! I love their mission to promote farming and heritage vegetables too. You can't go wrong with their fruit and veggie juices.

AIC: What have been your impressions of Asahikawa so far and how does it compare to your hometown?

Carly: Asahikawa is awesome! The people are so friendly and easy to talk to, and I like how snow and cold don't scare them. There's always something to do there, whether it's skiing, hiking up Asahidake, going to the snow festival, or checking out nearby art-mecca Higashikawa. Whenever I have visitors, I always try to take them to Asahikawa. As far as comparing it to my hometown, I would say the weather is similar and the people are also quite friendly in both towns, but Asahikawa seems a bit smaller than where I'm

from population-wise. Also Minneapolis is incredibly flat, but has many many lakes, so the geography is different.

AIC: Do you mind sharing any frustrations or challenges you have encountered thus far?

Carly: This is my first time living abroad, so I'm always frustrated at essentially being illiterate. Just going to the cleaning product aisle at the grocery store can be a huge challenge to find what I need. At first when I moved here, I experienced culture shock from small things like this that would almost bring me to tears, but honestly I learned after a while that asking for help really brings out the kind side of people and I'm no longer intimidated to do some of these seemingly simple tasks. I hope that anyone reading this will feel empowered to say hello to a foreigner they might see out in public, because it can be isolating sometimes not to have anyone to talk to and a small interaction like that can really brighten someone's day, even if the whole interaction is in Japanese or gestures!

AIC: Do you have goals or things you are looking forward to doing here in Japan?

Carly: It has always been my goal to live abroad so I can expand my worldview and step out of my comfort zone, and I'm happy to say I am doing just that! My New Year's resolution has been to really get back to studying Japanese and I'm taking a lot of steps to ensure that I'm improving. Next, I think I want to find a local volunteer group or club to join, as my friend group so far has been pretty limited to foreigners. And of course I'm looking forward to exploring more of Hokkaido and greater Japan- I'm always thinking about my next travel destination!

AIC: Is there anything else you would like to say to our readers?

Carly: Thank you for reading. Next time you're in Chitose, please reach out and say hi if you get the chance. (´▽`)



Cornbread Recipe

120 grams of flour
180 grams of cornmeal
150 grams of sugar
12 grams of baking powder
8 grams of salt
1 cup of milk
 $\frac{1}{3}$ cup of vegetable oil
1 egg



Mix dry ingredients and then mix in wet ingredients until the clumps are gone. Bake for 20-30 minutes for 200°C in an 8x8 inch pan.

Winter Meals

by Samuel Culver

Winter is starting to come to an end and we are beginning to usher in Spring! Within a few weeks the grass will begin to peek through, the tree's will start to come back to life, and we will no longer have to wear our heavy coats and snow boots everywhere we go! However, as we usher out winter, that means we will have to also say goodbye to a few of our favorite winter meals.

This is my first winter in Hokkaido and I was definitely not prepared for this type of winter! Missouri will get about 45 cm of snow throughout the entirety of winter. We will get about 3-8 cm of snow at a time, it will melt, and then in two or three weeks it will snow again. Watching the snowfall for almost 48 hours straight blew my mind!

After the first initial snow I knew I needed to stock up on some of my favorite winter meals, but I wasn't sure what I would be able to make with the ingredients sold at my local grocery store. I was able to find ingredients for potato soup, corn porridge, and tomato soup, which made me very excited! However, I was shocked to NOT find any cornbread or cornmeal at my local store! I knew I wouldn't be able to find chili seasoning packets and that I would have to create my own blend, but I figured with the several other corn related products that I would be able to find cornmeal or cornflour, but I wasn't able to find any.

This began my quest to find a way to make cornbread. Chili, potato soup, and many other winter meals just aren't the same without it! I began to google online and tried searching my local market again but found that google was correct, I would likely need to visit an import shop to find it. Luckily, I was visiting Asahikawa that weekend and knew I would be able to visit the import shop there. They had cornmeal and a seasoning packet for chili!

The next day I began mixing in the ingredients and got to the last ingredient on my list. Egg. However, in my quest to find cornmeal, I unfortunately never realized that I had used all of the eggs. It was snowing pretty heavily that day and my table-top oven was already pre-heated to 200C. I was stumped and defeated. I wasn't sure what to do! My wife is a professional baker, but she was visiting the United States for the holidays, so I had to once again rely on google to save the day. It told me that I could use Mayonnaise as an egg substitute...but I wasn't sure if kewpie mayo was the same as the Kraft mayo that this article was talking about. I figured I had come this far and I had enough cornmeal left that if I butchered this batch I could make more the next time I was able to get to the store. So I squeezed in some mayo that was about the size of an egg (I guessed on the amount) , mixed the batter together, and put the concoction into the oven.

About 25 minutes later the tooth-pick came out clean and the cornbread was finished! I let it cool and

Spotting Sam, Cont.

cut the loaf into squares. The moment of truth was upon me. It looked like cornbread, it smelt like cornbread, it even felt like cornbread! But, the question of taste was the most important...I popped a piece in my mouth and I was genuinely surprised by how good it tasted! It tasted just like the cornbread I would make (from a box) in the United States. I ate a few more pieces and decided to save it for dinner the next day since I wanted to have chili.

Chili is a fall and winter meal to me, with the exception of Fourth of July where I do enjoy eating left-over chili from chili-dogs. My favorite part of chili is how many different styles of chili there are! From Cincinnati to Detroit, North to South, and even between family members, every chili has something just a little different to it that makes it unique and makes it personal. I'm still working on my chili recipe, but I'm glad to have found my own twist on cornbread...even if it is very strange!

I have tried a few traditional winter Japanese meals that have popped up at my local market, but I'm not sure what they are called. I do not speak or read Japanese very well, so most of my choices with food are based on look and smell. They've all been delightful, but my favorite has been eating the "Shibetsu Lamb Curry" from my school lunches. Nothing beats it on frigid winter day!

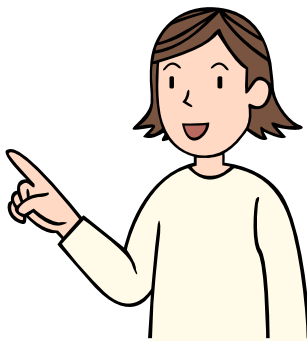
日本手話で話そう! Let's Use JSL!



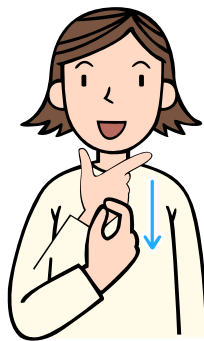
Are you ready to learn some more Japanese Sign Language (JSL)? This time, let's teach you two simple but very powerful phrases! Who knows, maybe they'll come in handy!



I



YOU/THAT



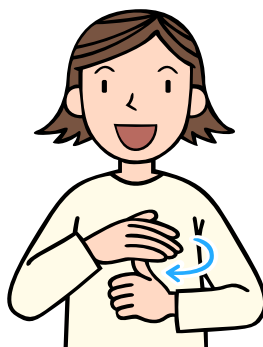
LOVE/LIKE/WANT

Depending on the context, this can mean many things! If you point at someone, it means "**I love you**"! If you point at an object, it can mean you like it, you love it, or you want it! It all depends on context. How cool is that?! Just be careful if you ever find yourself signing with a D/deaf person! (^_-)



YOU

+



CUTE*

Just like in Japanese (the spoken language), D/deaf people call many things cute (or *kawaii*) in JSL! However, to call someone/something cute, the sign changes slightly! To call a **boy** cute, you hover one hand in a circular motion over a **thumb** (as seen in the illustration). If it is for a **girl**, you change the thumb to a **pinkie**! And if it's for **something in general**, you can use a **flat hand** with the palm facing downwards! The reason for this is because in JSL (and Japanese culture), the hand signs for man and woman are the thumb and pinkie, respectively!

Movies - April

**The 1st day of every month is Movie Day in Asahikawa. Admission (tax included) is ¥1,100 for Adults, ¥800 for High School Students and Under at all theaters.*

Aeon Cinema Only: Every Monday is Happy Monday! Admission is ¥1,100 (tax included) for all.

Cineplex 7 Asahikawa and Dinos Cinemas Only: Every Wednesday is Ladies' Day! Admission is ¥1,100 (tax included for women at all theaters.

Aeon Cinema: Miyashita-dori 7-chome / 0166-74-6411

URL: cinema.aeoncinema.com/wm/asahikawa (Japanese)

Now Showing

- Touken Ranbu 2 (Japanese)
- Nemesis: Mystery of Golden Spiral (Japanese)
- Lyle, Lyle, Crocodile (Japanese, English/PG12)
- Gridman Universe (Japanese)
- My Happy Marriage (Japanese)
- Shazam! Fury of the Gods (English)
- Puss in Boots: The Last Wish (English/Anime)
- Shin Kamen Rider (Japanese/PG12)
- Thomas the Tank Engine Movie (Japanese/Anime)
- Doraemon: Nobita's Sky Utopia (Japanese/Anime)
- And Yet, You are So Sweet (Japanese)
- Everything Everywhere All at Once (English)
- The Fablemans (English)
- Yudo (Japanese)
- Shylock no Kodomotachi (Japanese)
- Blue Giant (Japanese/Anime)
- Damon Slayer: To the Swordsmith Village (Japanese PG12/Anime)
- The First Slam Dunk (Japanese/Anime)
- Suzume no Tojimari (Japanese/Anime)

Coming Soon

- Shikakenin Fujieda Baian: Part 2 (Japanese) 4/7
- Knock at the Cabin (English) 4/7
- Detective Conan: Black Iron Submarine (Japanese/Anime) 4/14
- Tokyo Revengers 2: Bloody Halloween (Japanese/PG12) 4/21
- Tokyo MER (Japanese) 4/28
- Knights of the Zodiac (English) 4/28
- The Super Mario Bros. Movie (Japanese, English/Anime) 4/28
- Otonanajimi (Japanese) 5/12
- Memory (English/R15+) 5/12
- Fast X (English) 5/19
- Creed III (English) 5/26
- Rohan at the Louvre (Japanese) 5/26
- Sailor Moon Cosmos: Part 1 (Japanese/Anime) 6/9
- Kikaijima (Japanese/PG12) 6/16
- Daimyo Tousan (Japanese) 6/23
- Sailor Moon Cosmos: Part 2 (Japanese/Anime) 6/30
- Sore Ike! Anpanman: Roboly to Pokapoka Present (Japanese/Anime) 6/30

***Movie schedules change often. Please call the theater for confirmation details.**

Movies - April

**The 1st day of every month is Movie Day in Asahikawa. Admission (tax included) is ¥1,100 for Adults, ¥800 for High School Students and Under at all theaters.*

Aeon Cinema Only: Every Monday is Happy Monday! Admission is ¥1,100 (tax included) for all.

Cineplex 7 Asahikawa and Dinos Cinemas Only: Every Wednesday is Ladies' Day! Admission is ¥1,100 (tax included for women at all theaters.

CinePlex 7 Asahikawa: Nagayama 12-jo 3-chome Western Powers Nagayama
0166-49-1000 / URL: <http://www.unitedcinemas.jp/asahikawa/index.html> (Japanese)

Now Showing

- Orphan: First Kill (English/R15+)
- Dungeons & Dragons: Honor Among Thieves (English)
- Nemesis: Mystery of Golden Spiral (Japanese)
- Touken Ranbu 2 (Japanese)
- Lyle, Lyle, Crocodile (Japanese, English/PG12)
- Do Unto Others (Japanese)
- Shin Kamen Rider (Japanese/PG12)
- Shazam! Fury of the Gods (English)
- My Happy Marriage (Japanese)
- Doraemon: Nobita's Sky Utopia (Japanese/Anime)
- Everything Everywhere All at Once (English)
- Yudo (Japanese)
- Ant-Man and the Wasp: Quantumania (English 4DX)
- Shylock no Kodomotachi (Japanese)
- Damon Slayer: To the Swordsmith Village (Japanese 4DX PG12/Anime)
- The First Slam Dunk (Japanese/Anime)
- Suzume no Tojimari (Japanese/Anime)

Coming Soon

- Air (English) 4/7
- Detective Conan: Black Iron Submarine (Japanese 4DX/Anime) 4/14
- Tokyo Revengers 2: Bloody Halloween (Japanese/PG12) 4/21
- GenePro 7 (Japanese/PG12) 4/21
- Tokyo MER (Japanese) 4/28
- The Super Mario Bros. Movie (English) 4/28
- Knights of the Zodiac (English) 4/28
- Father of the Milky Way Railroad (Japanese) 5/5
- The Super Mario Bros. Movie (Japanese/Anime R15+) 5/12
- Psycho-Pass Providence (Japanese/Anime R15+) 5/12
- Shina Pushu the Movie (Japanese/Anime) 5/19
- Hard Days (Japanese) 5/19
- Fast X (English) 5/19
- Creed III (English) 5/26
- Black Clover: Sword of the Wizard King (Japanese/Anime) 6/16
- Daimyo Tousan (Japanese) 6/23

***Movie schedules change often. Please call the theater for confirmation details.**

AIC Bulletin Board

Need Help?

If you ever find yourself in need of assistance, know that the Hokkaido Foreign Resident Support Center is there for you! They are able to provide you with consultation services in various languages (Japanese, English, Chinese, Korean, Tagalog, Vietnamese, Russian, Indonesian, Thai, Nepalese, Burmese) on residence procedures, employment, medical care, welfare, childbirth, childcare, education, and more for FREE! Call them at 011-200-9595 or go to: www.hiecc.or.jp/soudan

Interesting activities such as quizzes, discussions, songs, games, handicrafts and much more, all in English! Come meet new people, relax and relate on Fun Fridays!

Dates: April 14th & 28th, May 12th & 26th, June 9th & 23rd
Times: 1:00pm-2:00pm ~Afternoon~ 2nd and 4th Friday of the month
6:30-8:30pm ~Night~ 2nd Friday of the month
Location: Asahikawa International Center, Common Meeting Room (1)
(Feeeal Asahikawa 7F 1-jo-dori 8-chome)
Charge: ¥1,500 for 3 months (Free for volunteer leaders)



北海道 外国人 相談 センター
Hokkaido Foreign Resident Support Center
北海道外国人相談中心 홋카이도 외국인 상담 센터
Trung tâm hỗ trợ người nước ngoài Hokkaido

何でも聞いてください! 何でも相談します!
ASK US ANYTHING!

我们欢迎任何咨询!
무엇이든 물어보세요!

MAGTANONG PO SA AMIN!
HÃY HỎI CHÚNG TÔI NHÉ!

OPEN MON~FRI 9:00-17:00
CLOSED WEEKDAYS 12:00-13:00
AND SAT, SUN, & PUBLIC HOLIDAYS

CONTACT US!
011-200-9595
support@hiecc.or.jp
www.hiecc.or.jp/soudan

Fun Fridays!

The AIC offers many services to make your life in Asahikawa more enjoyable. Here are just a few:

Volunteer Guide: Volunteers are registered to help translate and interpret.

Event Volunteer: The AIC plans many exciting events throughout the year, such as Friendship Parties.

Why not become a volunteer and help plan these events?

Homestay: Families are registered to welcome you into their homes for an overnight stay or just an afternoon visit.



The Asahikawa International Center (Feeeal Asahikawa 7F 1-jo-dori 8-chome) has free Wi-Fi available for public use. If you reside in Asahikawa, registration for a user card is required. Please feel free to come by anytime, as well as check out some of the other services and activities available at the Asahikawa International Center!

Spread the Word...

Contribute to the AIC newsletter and share any interesting information you may have with other readers. You may write on any topic including: items to buy/shell, offers for culture/language exchange, or write an essay about your life in Asahikawa or your hometown. The article should not be profit-related! Please send your submissions to us at the AIC.



Asahikawa International Committee

Asahikawa International Center Feeeal Asahikawa 7F, 1-jo-dori 8-chome,
Asahikawa 070-0031

TEL: (0166)25-7491 FAX: (0166)23-4924

E-mail: cir_kokusai@city.asahikawa.hokkaido.jp

****The opinions expressed in the essays are those of the writers and do not necessarily reflect the opinions of the AIC or the City of Asahikawa.****