

旭川 ASAHIKAWA Info

July 2012 VOL. 188

Also visit us at: <http://asahikawaic.jp/en/>



Hokkaido News Top 5



July 2012

Compiled by TAKADA Nobuhiro

May 24

A 19-year-old student of Otaru University of Commerce, who had been suffering from acute alcoholic poisoning, passed away at a hospital in the city. The student suffered from alcohol poisoning along with eight other students during their American football barbecue party. The university has decided to shut down the football club and cancel a university festival this year.

May 24

The City of Asahikawa announced the plan to build a large herbivore exhibition facility. Animals from Africa, such as giraffes, hippopotami, ostriches, pelicans, guinea fowls, and warthogs. They will be kept in a facility with a deck to observe giraffes and a glass tank with a hippopotamus. The new facility is scheduled to open to the public in autumn of 2013.

May 27

Route 230 has been completely open to traffic for the first time in 22 days. The national road had been closed to traffic since May 4th due to a mudslide in the vicinity of Nakayama Path. Route 230 is one of the principal arteries which connect Sapporo and Hakodate.

June 1

A ceremony was held to commemorate the 40th Anniversary of Kaimonokoen Shopping Street. In 1972 the shopping street became the first car-free mall in Japan. The mall stretches one kilometer from JR Asahikawa Station to 8-jo-dori, with 150 shops and stores along the street.

June 10

The 40th Hokkaido Marching Band Festival took place in Asahikawa. Marching bands and baton twirlers from all over Hokkaido added a lively note to the parade. Over a hundred bands and around 4,000 people took part. The three-hour parade included participants of all ages, from kindergarten children to senior citizens.



For further information or to register for events contact:

Asahikawa International Committee
(SASAKI Mai, Sergej NESIC, or
SAITO Emmy)

Location:

International Affairs Division, Civic and
Community Services Dept.

Address:

Asahikawa International Center
Feeeal Asahikawa 7F, 1-jo-dori 8-
chome, Asahikawa 070-0031

Tel: (0166) 25-7491

Fax: (0166) 23-4924

E-mail:

cir_kokusai@city.asahikawa.hokkaido.jp

Inside This Issue...

Hokkaido News Top 5 <i>By TAKADA Nobuhiro</i>	1	Life In Hokkaido "A Beautiful Blue Pond in Biei" <i>By SAKURABA Satoshi</i>	5
Upcoming Events	2-3	40th Anniversary of Heiwadori Kaimonokoen Pt.2 <i>By Sergej Nesic</i>	7
Hello Asahikawa "Yunda Dai" <i>Interviewed by AIC</i>	4	Hello Wild Flowers "Nanbuso" <i>By KUDOH Hitoshi</i>	8
Life In Asahikawa "Mt. Daisetsuzan" <i>By KITAMURA Tadao</i>	5	Movies	9
		Bulletin Board	10

Special Thanks to KAWAI Tatsuo
Proofreader & Advisor

SHUMPUTEI SHOTA AND HAYASHIYA TAIHEI "TWO-MAN RAKUGO RECITAL" 春風亭昇太&林家たい平 二人会

Rakugo (literally, fallen words) is traditional Japanese verbal entertainment. A storyteller (in this two) tells a story while sitting in a *Seiza* position and using only a fan and a cloth as props. *Rakugo* can be traced back to the *Kamakura* Period and the *Uji Shui Monogatari* collection of stories. It developed through the *Edo* and *Meiji* Periods and became common during the *Showa* Period. SHUMPUTEI Shota (real name TANOSHITA Yuji) and HAYASHIYA Taihei (TAJIKI Akira) are two of the most popular contemporary *Rakugoka* (Rakugo performers).

Date: July 5th (Thursday)

Time: Show 6:30pm

Venue: Asahikawa Civic Culture Hall (7-jo 9-chome)

Admission: S-Seats ¥4,500, A-Seats ¥4,000

Ticket Office: Gyokkodo, Lawson Ticket, Ticket Pia

For further information contact: 0138-51-3339 (Sheegar)



CONSULTATION SESSIONS FOR THE NEW RESIDENT ADMINISTRATION SYSTEM 新しい在留管理制度の開始に伴う相談会

The new resident Registration System for Foreign Residents, which will replace the current Alien Registration System, will begin on 9th July, 2012. Four free consultation sessions for foreign residents and their families, for businesses and organizations hosting foreign trainees, etc., will be held over June and July. Officials from the Sapporo Regional Immigration Bureau will be on hand to take any questions you may have. All foreign residents are welcome to attend, so if you're uncertain about anything with regards to the new resident administration system, feel free to book a session.

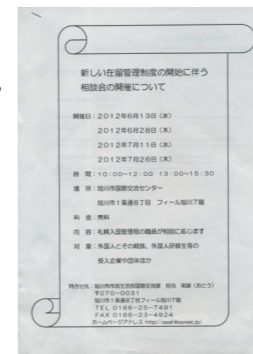
Dates: July 11th (Wednesday), July 26th (Thursday)

Time: Morning Sessions 10:00am thru 12:00pm, Afternoon Sessions 1:00pm thru 3:30pm

Venue: Asahikawa International Center (1-jo dori 8-chome "Feeeal" Asahikawa 7F)

Admission: Free

For further information & bookings contact: 25-7491 (Ms. Otou, Asahikawa City International Division)



"THE DARUMA FOREST MUSIC STORE" CHILDREN ART THEATER こども芸術劇場「夢探検」「だるま森のがっきやさん」

This unique art theater production is the 89th performance of the *Yume Tanken* (Dream Expedition) series of children art theater. The audience is fully involved in the performance. After a one-man musical performance, the kids are instructed in how to create colourful and fun designs.

Date: July 16th (Monday, Public Holiday)

Time: Doors 2:00pm, Show 2:30pm

Venue: Asahikawa Civic Culture Hall (7-jo 9-chome)

Admission: General ¥1,000 (¥1,200 at the door,) Children ¥700 (¥900 at the door)

Ticket Office: Asahikawa Civic Culture Hall, Kodomo Fukido

For further information contact: 090-2871-6619 (YAMAMOTO)



TRY-TONE CONCERT

トライトーン コンサート

Try-tone is a contemporary *A cappella* (single or group singing without instrumental sound) mixed quartet known for its originality and superb harmonics. Their wide-ranging repertoire includes everything from classical composers through to Stevie Wonder.

Date: July 19th (Thursday)

Time: Doors 6:15pm, Show 7:00pm

Venue: Asahikawa Taisetsu Crystal Hall (Kagura 3-jo 7-chome)

Admission: Fee to join the society ¥2,000 (Students ¥1,000,) plus a monthly fee of ¥2,000 (Students ¥1,000). To become a member you need to join as a group of three people, otherwise contact the society. Society members can attend five concerts a year organized by the Asahikawa Music Appreciation Society.)

For further information contact: 22-5367 (Asahikawa Music Appreciation Society)



HIKAWA KIYOSHI CONCERT TOUR 2012

氷川きよし コンサートツアー2012

HIKAWA Kiyoshi (real name YAMADA Kiyoshi) is known as “The Prince of *Enka*” due to his young age and wide popularity. He was given his stage name by actor/director KITANO Takeshi, also known as Beat Takeshi. He’s said to be responsible for popularizing *Enka* (traditional Japanese songs) amongst the 20’s demographics. He often appears on TV and is a regular on the hugely popular NHK’s *Kayo* Concert and the annual New Year’s music show, *Kohaku Uta Gassen*.



Date: July 20th (Friday)
Time: Afternoon Show 2:30pm, Evening Show 6:30pm
Venue: Asahikawa Civic Culture Hall (7-jo 9-chome)
Admission: General ¥7,000
Ticket Office: Ticket Pia, Lawson Ticket
For further information contact: 03-5772-2057 (A and A)

NEW CLASSICAL MUSIC PLAYERS IN ASAHIKAWA OPEN AUDITION

旭川市新人音楽会 公開オーディション

The open audition will be held at Asahikawa Taisetsu Crystal Hall’s Music Hall, a venue renowned for its superb acoustics. Auditioning is limited to people either born or presently residing in Asahikawa, and includes pianists, chorus choirs, solo vocalists, and wind & string instrumentalists (soloists and ensembles.)



Date: July 29th (Sunday)
Time: Start 10:30am
Venue: Asahikawa Taisetsu Crystal Hall (Kagura 3-jo 7-chome)
Admission: Free
For further information contact: 62-7173 (Office)

NORTH JAPAN PHILHARMONIC ORCHESTRA’S 24TH REGULAR CONCERT

第24回定期演奏会北日本フィルハーモニー管弦楽団

This year’s concert by this internationally renowned orchestra is billed an “Opera gala.” Operas performed will include, Verdi’s “*Nabucco*” and “*La traviata*,” Donizetti’s “*The Elixir of Love*,” and more. Also included in the program is the final movement of Beethoven’s 9th Symphony “*Ode to Joy*.”



Date: August 6th (Monday)
Time: Doors 6:00pm, Show 6:30pm
Venue: Asahikawa Civic Culture Hall (7-jo 9-chome)
Admission: General ¥2,000, Students ¥1,000
Ticket Office: Shimada Music Academy
For further information and tickets contact: 22-2078 (Shimada Music Academy)

SATO CHURYO EXHIBITION

佐藤忠良展

SATO Churyo was one of Japan’s foremost post-war master sculptors. This exhibition commemorates the centennial of his birth, as well as being one of the special exhibitions celebrating the 30th Anniversary of Hokkaido Asahikawa Museum of Art. Works on display will also include SATO’s picture books.



Date: July 4th (Wednesday) thru August 26th (Sunday)
Time: 9:30am~5:00pm (last entry 4:30pm) Museum is closed on Mondays.
Venue: Hokkaido Asahikawa Museum of Art (Tokiwa Park)
Admission: General ¥900(* for groups of over 10 people ¥700) University & High School Students ¥600 (* ¥400) & Junior High School Students & Under Free Pensioners, Disabled, & Persons with special needs Free.
Ticket Office: Hokkaido Asahikawa Museum of Art
For further information contact: 25-2577 (Hokkaido Asahikawa Museum of Art)

EVENTS IN ASAHIKAWA FOR JULY



Hello Asahikawa!

Name: Yunda Dai

Hometown: Changsha, Hunan Province, China

Interviewed: 26th June, 2012

By AIC

AIC: *What do you do here in Asahikawa?*

Yunda : I'm an exchange student on the AFS international exchange program. I arrived in Asahikawa in March and I'm due to stay here for ten months. I live with my host family and attend Asahikawa Kita (North) High School. My aim is to experience Japanese culture as much as possible.

AIC: *Why did you choose to do your student exchange in Japan?*

Yunda : Actually, I'm very interested in Japanese culture, both traditional and modern. I'm a big fan of anime and manga. I wanted to learn and study Japanese culture at its source. I believe that there's a big difference between learning about Japan from China and actually being here. The only way I could really feel the real Japan was to live in Japan.

AIC: *Have you traveled abroad before?*

Yunda : No, this trip to Japan is my first time traveling out of China.

AIC: *Tell us a little bit about your hometown.*

Yunda : My hometown, Changsha, is the capital city of the Hunan Province which is located in south-central China. It's quite a large city with a population of over 7 million people. One of the things Hunan Province is famous for and proud of is that it's the birthplace of Mao Tse-tung, Chairman Mao. Changsha is a very modern city with lots of skyscrapers. It has a humid, almost tropical climate and the summer season is very hot. The winters are not as cold as in Asahikawa. We might get a little bit of snow once every three years. I think it's very different to Asahikawa, especially the natural surroundings. We have great food, and one of the most famous and delicious dishes is Chou Dofu (臭豆腐.) It's fermented tofu and its name literally translates as Stinky Tofu. Despite its name it's really delicious, and Chairman Mao loved it. Also, recently Japan has become very popular in Changsha. Aspects of Japanese modern culture can be found everywhere, such as the language, fashion, anime, J-pop music, etc.

AIC: *What did you like to do in your free time back home.*

Yunda : I like to meet up and chat with friends. I didn't have much free time, as school is from Monday thru Saturday. The only day off is Sunday, and most of the day I have to do homework. I usually have less than half a day as free time. Sometimes I go shopping with my family.

AIC: *What are your plans for the future?*

Yunda : During my time here in Asahikawa, I want to learn as much Japanese as I can. I would also love to visit Akihabara, because anime is one of my favourite hobbies. My friends call me an *Otaku*. Eventually, I wish to enter a Japanese university to study IT. My dream is to become a computer programmer and live in Japan.

AIC: *Well, thank you very much for your time, Yunda.*

Yunda : You're welcome.

Life In Asahikawa

MOUNT DAISETSUZAN

By: KITAMURA Tadao

July is the month of the youth. School summer vacation starts in the middle or later this month. High-schools and universities also start their long vacations at this time. Most private companies offer their employees to make use of their labor holidays during this great season. Mountains, hills, fields, lakesides, the seaside, and sporting places are filled with young people joyfully chattering and laughing.

This land, Hokkaido, is the most popular place in the archipelago during this season. It will not be too much to say that here, in Asahikawa, is the central base for youth sporting activity. You can enter into the mountain paradise, Daisetsuzan National Park, full of beautiful scenery and natural wonder, in one and half hours by bus from Asahikawa.

Daisetsuzan National Park is the largest national park in Japan, as large as the area of Kanagawa Prefecture. It's full of high mountains, the so-called 'the roof of Hokkaido,' volcanoes, hot-springs, gorges, valleys, lakes, and swamps. It still keeps its pristine natural state, and several precious fauna and flora are still alive in this area. Even in mid-summer you'll see large snowy ravines akin to glaciers; though they're to be found at higher altitudes (about 2,000 m.)

Even in the European Alps you cannot see such large colonies of alpine flora as in Daisetsuzan Mountains. Colonies of singular flora species such as *Rhododendron aureum*, *Phyllodoce aleutica* or *Geum pentapetalum* are so large that it is said that you cannot see them on any mountain in the world on this scale.

A squeaking hare is a small mammal as small as a rat; you'll not see him as frequently as you perchance see a marmot in the European Alps. It is said to be a remnant of the Glacier Age. Even though you cannot see him, you'll may hear him squeaking among the rocks. They can be found in rocky places such as around Mt. Tokachidake or Mt. Ishikaridake.

An Usubakicho, a middle-sized butterfly, whose caterpillar feeds only on flowers of the *Dicentra peregrina*, which only grows in the sandy and pebbled land of high altitude. It is also a species which is in danger of dying out. You'll see this butterfly in highland deserts like Mt. Akadake and Takanegahara ridge plain.

Two natural spas, Asahidake Onsen and Sounkyo Onsen, are most accessible on Daisetsu mountains, for both two are linked by bus routes within an hour and half from JR Asahikawa Station. Hotels and some lodging accommodations are available in both spas (Sounkyo is much bigger.) The two spas are served by rope-way services bringing you up into the wonderful highland paradise in some ten minutes or so.

The two ropeway- ends are connected to each other by a pleasant trekking route with various routes of around eight hours walks passing by the summits of Mt. Asahidake (2290-m) and Mt. Kurodake (1984-m,) of which Asahidake is the highest mountain of Hokkaido, and viewing a pristine world in a huge crater basin. Pretty alpine flowers, mountain birds and other creatures, the remaining snow, and a bush of creeping pines will surely please your eyes.

However, you should make sure not go outside the rope set along a trek, as to not damage the untouched nature; this is the general rule in any national park in Japan .

And you should also note that the temperature on Mt. Daisetsuzan is quite unstable and at times very dangerous. In July 2009, nine people died of hypothermia caused by sudden climate change on Mt. Tomuraushi (2141-m,) midway between Mt. Asahidake and Mt. Tokachidake.



Life In Hokkaido

A Beautiful Blue Pond in Biei

By: SAKURABA Satoshi

It's getting hotter by the day in Hokkaido. It is said that there is a big difference in temperature between summer and winter in Asahikawa. To get relief from the heat, I highly recommend visiting Toma stalactite cave (Toma Shonyudo 当麻鍾乳洞). However, this time, I will introduce to you a slightly cool place surrounded by woods.

Have you heard of Aoi-ike (青い池 : the blue pond) in Biei (美瑛町)? It can be said that this place has received substantial media attention and is becoming a famous place in Hokkaido. Aoi-ike is located in the southeast of Biei. To get there from Asahikawa by car, you should travel southbound on Route 237, and turn left at the intersection of Route 237 and Prefectural Road 966. Then, after driving straight down the Prefectural Road 966 for about 15 minutes, you will be able to see the entrance to Aoi-ike on your left. You should also be on the lookout on your left side, as the entrance may be hard to spot. If you don't hit a traffic jam, you can get there in about an hour.

Recently, car parking space has been rearranged and expanded. I went there last June, and found that the car parking space was separated into two areas, that is, an area for public vehicles and for the tour buses. The parking area may have doubled in size compared to last year. So, you can park more easily.

Because you can stand by the waterfront, and the lake being surrounded by woods, the air is somewhat cool. Of course, you can take pictures of the blue pond. Reason being, the water flowing into the pond from the upper stream contains aluminum, giving Aoi-ike its blue color.

I think that you can see a more beautiful blue color when the weather is fine (no clouds).

So, whether you can see this beautiful color may be up to having some good luck as well. However, charm of this pond isn't only its blue color but, also the trees standing in the pond. This scenery is very mysterious and one of my favorite characteristics of the pond.

About 10 years ago, this place was not widely known and was rarely visited. But now, there are many tourists coming to see Aoi-ike and it doesn't seem to be a rarely visited region any more. Frankly speaking, I have mixed feelings about this. However, I'm happy people can view beautiful scenery such as this. It's recommended that you go to Aoi-ike on a clear day.

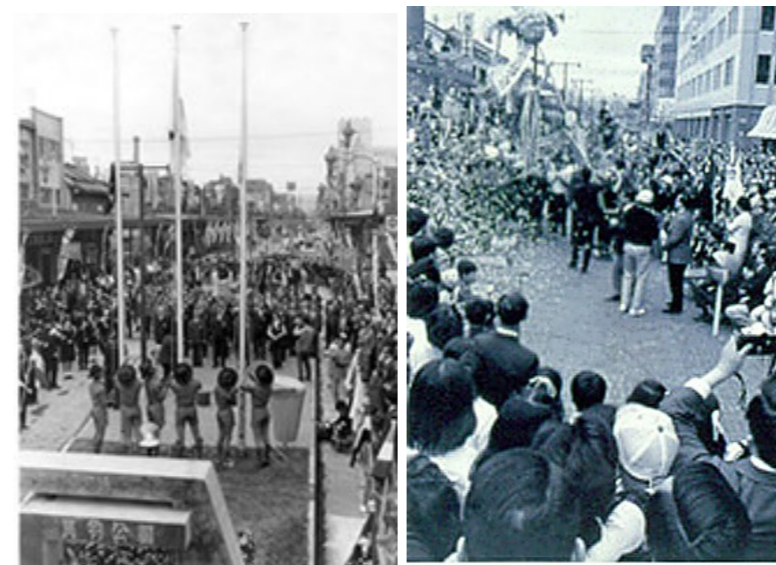


Aoi-ike, this year (June)

40th Anniversary of Heiwadori Kaimonoko-en

In 1965, Mayor IGARASHI Kozo, who in 1963 became the youngest elected mayor in Japan, announced a draft plan to create a "Pedestrian Paradise" at the site of Heiwadori Street. The envisaged pedestrian zone would be modeled on European corsos and was part of IGARASHI's campaign against the rapidly growing "motorization" of Asahikawa, and a return to a more human-centered society (in 1994 IGARASHI became the Chief Cabinet Secretary in the MURAYAMA coalition government.) In 1969, as the last phase of preparations for the construction of the "Pedestrian Paradise," professor of Kyoto University and specialist in urban development, UEDA Atsushi, was chosen to head the working group on the project. The project was seen as a social experiment, and there were a number of major obstacles to its successful implementation. The taxi industry and bus companies were opposed to the project, citing possible loss of customers and traffic congestion leading to delays. There were also numerous challenges to the actual construction of the pedestrian zone, namely, road heating. A "pedestrian deck" would need to be placed on top of the existing street surface under which molten snow would be stored. This was beyond the budget at the time and was envisaged as a future upgrade (road heating was installed as part of the 2nd Kaimonoko-en upgrade project between 1998 and 2002.) Finally, on June 1, 1972, Heiwadori Kaimonoko-en was officially opened for public use as a permanent pedestrian street. At the opening ceremony, Mayor IGARASHI famously proclaimed that "Heiwadori has been transformed from a road into a park!" The word he used was "Henshin - 変身" (transformation, metamorphosis) and it was chosen as the buzzword-of-the-year in Japan that year. Heiwadori Kaimonoko-en Shopping soon became hugely popular itself, and new challenges lay ahead.

Part 2 By Sergej Nesic



Heiwadori Kaimonoko-en Opening Ceremony, June 1, 1972. Over 40,000 people attended the ceremony, and shops on the street reported a 36% in sales during 1972.



IGARASHI Kozo, mayor of Asahikawa from 1963 to 1974.

Hello Wild Flowers

Wandering Among The Wildflowers Around Asahikawa By Hitoshi KUDOH

“Wow, you are an elephant! In the shady forest in Japan.” I blinked my eyes hard, “What are you doing here?”

“Comment sais-tu! Tu me reconnais moi?” she said to me. “Alors, je suis de là savane africaine. Je me évacuais de là et suis ici depuis. Maintenant nous sommes sur le point de disparaître en Afrique.”

“Because of their poaching of ivory?” I inquired. “Oui, c’est ça. Malgré le pacte de Washington.” confirmed she so. “Mais c’est difficile de survivre ici aussi.” added she sadly.

“Aujourd’hui, je rentre chez moi: mon étoile. Aujourd’hui, ça fera trente ans depuis j’avais tombé ici.” said the elephant. Just then, all of a sudden, the elephant faded out and could not be seen any more. And at the exact place where she had been, there was a white spike of flowers. “Oh, an *Achlys japonica*...But where are you, Elephant? I cannot see you at all.

“Ce qui est important, ça ne se voit pas...” came the familiar voice from nowhere.

“Yes, I know...Though *Achlys* is a clump-forming plant, here stands only a solitary one. That means this plant is also on the verge of...” sighed I.



*Water-colour painting of Nambuso
By Hitoshi KUDOH*

NAMBUSŌ (南部草) *Achlys japonica Maxim*

Family: Berberidaceae

Common name: Vanilla-leaf, Deer's foot

Description: Small, quaint, delicate perennial forb of dicotyledon. In spring, a shoot of two stalks sprouts from its thin rhizome. The stalks are erect and wire-like slender. One is for a leaf and the other is for a spike of flowers. The smooth single leaf consists of 3 leaflets, up to 3~8 cm. veins are conspicuous. Margins entire or coarsely sinuate. Two lateral outer leaflets symmetrically surround a middle lozenge leaflet. It looks like a deer foot. Flower has no bracteoles, no sepals, nor petals. Among 9~15 white thread-like anthers, there is an ovary. The anthers are 6-8 mm long and shed after pollination. Blooming from May - June.

An ovary ripens to become a brownish achene. The fruit contains 1 seed.

Height: Up to 10 - 25 cm. Insect-repellent, Medicinal.

Habitat: Shady forest, ravine.

Distribution: Indigenous to Japan. Northern Honshu and Hokkaido

Movies ~ July

*Every Wednesday is "Ladies' Day." Admission is ¥1,000 (tax included) for women at all theaters.

*The 1st day of every month is "Movie Day" in Asahikawa. Admission (tax included) is ¥1,000 for Adults, ¥800 for Senior High School Students and Under at all theaters.

★ **Cineplex 7 Asahikawa:** Nagayama 12-jo 3-chome Western Powers Nagayama / ☎ 49 – 1000
 URL: <http://www.kadokawa-cineplex.co.jp/asahikawa/> (Japanese)
Directions: Take Dohoku Bus No. 66, 72 or 665 at Bus stop No. 18 in front of Feeeal Asahikawa (1-jo-dori 8-chome). Get off at "Nagayama 10 (ju)-jo 3 (san)-chome."

Now Showing	Coming Soon
<ul style="list-style-type: none"> ● Rinjo (Japanese) ● Girl (Japanese) *until July 6th ● Rentaneko (Japanese) *until July 6th ● Thermae Romae (Japanese) ● The Rum Diary (English) ● Sadako 3D (Japanese) *until July 6th ● Dark Shadows (English) *until July 6th ● Men in Black 3(English/3D) ● We Bought a Zoo (English) *until July 6th ● Hotaru no Hikari (Japanese) ● Ai to Makoto (Japanese) ● The Amazing Spiderman (English/3D) ● Snow White and the Huntsman (English) 	<ul style="list-style-type: none"> ● Man on a Ledge (English) ● Okamikodomo no Ame to Yuki (Japanese/Animation) ● Anpanman - Yumigaere Banana Jima (Japanese/Animation) ● Pokemon - Kyuren Versus Seikenshi (Japanese/Animation) ● Umizaru - Brave Hearts (Japanese)

★ **Dinos Cinemas:** Taisetsu-dori 5-chome / ☎ 21 – 1218
 URL: http://www.geodinos.jp/cinema/asa_schedule.php?StoreID=5 (Japanese)
Directions: Take Dohoku Bus No. 61, 62, 67 or 667 at Bus stop No. 18 in front of Feeeal Asahikawa (1-jo-dori 8-chome). Get off at "Nippon Seishi mae."

Now Showing	Coming Soon
<ul style="list-style-type: none"> ● Thermae Romae (Japanese) ● Men in Black 3(English) ● Dark Shadows (English) ● Rinjo (Japanese) ● The Amazing Spiderman (English/3D) ● Berserk - Dorudorei Koryaku (Japanese/Animation) ● Killer Elite (English) *until July 13th ● Love Masao Kimi ga Iku (Japanese) ● We Bought a Zoo (English) ● Snow White and the Huntsman (English) 	<ul style="list-style-type: none"> ● Gusko Budori no Denki (Japanese/Animation) ● Brave (English/Animation) ● Helter Skelter (Japanese) ● Batman 3 - The Dark Night Rises (English) ● Umizaru - Brave Hearts (Japanese) ● Man on a Ledge (English)

Movie schedules change often. Please call the theater for confirmation and details.

The 51st Annual Asahikawa Summer Festival

It's almost time for the biggest summer event in Asahikawa. This year's Asahikawa Summer Festival will include all the favourite events and attractions, such as the firework display, portable shrine processions, Yosakoi dance performances, and much more. Get ready, because the fun is just around the corner!

Date: August 2nd (Thursday) ~ 4th (Saturday)

Time: Thursday 4:00pm ~ 10:00pm, Friday 2:00pm ~ 10:00pm, Saturday 2:00pm ~ 10:00pm

Venue: Asahikawa 3-jo 6-chome, Asahikawa Riverine Park, Asahibashi Bridge riverside, Kaimono Koen Shopping Street, Showa Dori street from 7-jo to 2-jo



Fun Fridays

Leaders coordinate a variety of interesting activities such as games, discussions, introductions, and quizzes. Meet new people, relax, relate, and communicate through English.

International Center Announcement

Internet Wi-Fi network is now operational at the Asahikawa International Center! To use the network you must register at the information counter. Also, certain rules apply, so please make sure to ask the staff for all the information regarding the use of the Wi-Fi network.

Dates: *Summer Session:* July 13th, August 10th, September 14th

Time: 1:00 ~ 3:00pm & 6:30 ~ 8:30pm, 2nd Friday of the month

Location: Asahikawa International Center, Common Meeting Room (1) Feeeal Asahikawa 7F 1-jo -dori 8-chome

Charge: ¥1,500 for 3 months (Free for volunteer leaders)

The AIC offers many services to make your life in Asahikawa more enjoyable. Here are just a few:

Volunteer Guide: Volunteers are registered to help translate and interpret.

Event Volunteer: The AIC has many exciting events planned for this year, including Friendship Parties and a Halloween Party. Why not become a volunteer and help plan these events?

Homestay: Families are registered to welcome you into their homes for an overnight stay or just for an afternoon visit.

For further information or to register, please contact AIC.

Center Computers: The Asahikawa International Center (Feeeal Asahikawa 7F 1-jo-dori 8-chome) has two computers available for public use free of charge. There is a time limit for use and prior registration is necessary. Please feel free to come by and use it anytime as well as check out some of the other services and activities available at the Asahikawa International Center.

Spread the Word...

Contribute to the AIC newsletter and share any interesting information you may have with other readers. You may write on any topic including, items to buy or sell, offers for culture/language exchanges, or write an essay about your life in Asahikawa or your hometown. The article should not be profit related! Please send your submissions to us at the AIC.



Asahikawa International Committee, International Affairs Division
Asahikawa International Center Feeeal Asahikawa 7F, 1-jo-dori 8-chome, Asahikawa 070-0031
Tel: (0166) 25-7491 Fax: (0166) 23-4924
E-mail: cir_kokusai@city.asahikawa.hokkaido.jp

****The opinions expressed in the essays are those of the writers and do not necessarily reflect the opinions of the Asahikawa International Committee or the City of Asahikawa.****