

# 旭川 ASAHIKAWA Info

February 2016 VOL. 231

Published by AIC

Also visit us at: <http://asahikawaic.jp/en/>



## Hokkaido News Top 5



February 2016

Compiled by TAKADA Nobuhiro

### December 23

Amazon has opened the "Asahikawa Furniture Online Store" which carries some 500 items of furniture and small wood products made in and around Asahikawa. The online store sells about 200 items of furniture such as chairs, tables, beds and bookshelves, and about 300 wooden goods such as clocks, photo frames, glasses cases and business card cases. Amazon Japan's reason to open the store is that the wood working industry in and around Asahikawa has a history of almost 100 years, and that their furniture and wooden goods have simple designs and high quality.

### December 23

"Yubari Melon," a specialty product in Yubari City, is approved as a "Japan Geographical Indication" along with "Kobe Beef" and other five products by the Japanese government. A geographical indication (GI) is a sign used on products that have a specific geographical origin and qualities/reputation that are owed to that origin. GI has been introduced in more than 100 countries all over the world based on World Trade Organization's treaty.

### January 6

Both JR Hokkaido and JR East Japan announced discounted fares on the Hokkaido Shinkansen Bullet Train that will begin operation from March 26 onward. The lowest fare between Hakodate and Tokyo is 15,460 yen, which is only 78 percent of regular fare. The least expensive bullet train ticket can be purchased on the website of JR East Japan, which is exclusively for mobile phones and PCs.

### January 17

The City of Asahikawa has started "Kitasaito Asahikawa Garden in Winter" that gives visitors amusements in winter around JR Asahikawa Station. A skating rink is prepared on the north side of the station. People can try rafting on the snow, riding on a rubber raft boat pulled by a snowmobile, in Kitasaito Garden on the south side of the station. There is a six-seater "Snow Train" or "Sightseeing Sleigh," connecting north exit and south exit of the station. Skating rink and sleigh available until February 14 although rafting will finish on January 31. For more details check the events section.

### January 19

Niseko is included in "The World's 100 Best Ski Resorts" by Snow Magazine in the U.K. published at the end of last year. The magazine praises not only on Niseko's quality of powder snow but also its quantity of snow with comments like "Niseko has 15 meters of snowfall every year!?" Ski courses with light and fine snowflakes in Niseko get four and half out of five stars in assessment. Its location not far from Sapporo and gondola (the seating compartment on a ski lift) get four stars.



### For further information or to register for events contact:

Asahikawa International Committee (SASAKI Mai, Jacob WERSCHHEY, or SAITO Emmy)

### Location:

International/City Affairs Division, Comprehensive Policy Dept.

### Address:

Asahikawa International Center  
Feeeal Asahikawa 7F, 1-jo-dori 8 - chome, Asahikawa 070-0031

Tel: (0166) 25-7491

Fax: (0166) 23-4924

### E-mail:

cir\_kokusai@city.asahikawa.hokkaido.jp

### Inside This Issue...

<b>Hokkaido News Top 5</b> <i>By TAKADA Nobuhiro</i>	<b>1</b>	<b>Hello Asahikawa !</b> <b>(Steven Suarez)</b> <i>Interviewed by AIC</i>	<b>5-8</b>
<b>Upcoming Events</b>	<b>2-3</b>	<b>Movies</b>	<b>8-9</b>
<b>Asahikawa Winter Festival</b>	<b>4</b>	<b>Bulletin Board</b>	<b>10</b>

Special Thanks to KAWAI Tatsuo, Proofreader & Advisor

### Kita Saito Asahikawa Winter Garden 北彩都あさひかわ 冬のガーデン

In case you have not noticed, the area around JR Asahikawa Station has been transformed into a winter wonderland! You might have known about the skating rink in front of the station but did you know about the "Sightseeing Sleigh" on the opposite side? Do not miss out on either attraction!

#### Skating Rink

**Date:** Now until February 14th  
(Sunday - **Valentine's Day**)

**Time:** 10am to 8pm

**Venue:** JR Asahikawa Station North Plaza

**Admission:** FREE (Skate Rentals Included!!)

#### Sightseeing Sleigh

**Date:** Now until February 14th  
(Sunday - **Valentine's Day**)

**Time:** 10am to 4pm (Until Sunset)

**Venue:** JR Asahikawa Station South Plaza

**Cost:** ¥200 per ride (¥100 for half)



### Asahikawa Commercial High School Wind Instrument Department 29th Regular Concert 北海道旭川商業高等学校吹奏楽局 第29回定期演奏会

Program includes works of Puccini, "Black Light Music Theatre," El Cumbanchero (Saturday exclusive), and "Daybreak - For Chorus and Wind Instruments" (Sunday exclusive).

**Date:** February 6th (Saturday) and 7th (Sunday)

**Time:** Doors 4:30pm, Show 5:00pm (Saturday); Doors 12:30pm, Show 1:00pm (Sunday)

**Venue:** Asahikawa Civic Culture Hall, Large Hall (7-jo-dori 9-chome)

**Admission:** Reserved ¥1,500; Non-Reserved ¥1000; High School and below ¥500

**Ticket Office:** Asahikawa Civic Culture Hall, Yamaha Music Store, Lawson (L-code 14211)

**For further information contact:** 080-3231-5975



### 17th Asahikawa University High School Brass Band Regular Concert 第17回旭川大学高校吹奏楽部 定期演奏会

Asahikawa University High School is known for having thriving extracurricular activities. One of which is their brass band which has taken first prize in the 60th Hokkaido Wind Orchestra Competition as well as second place prizes in the 15th Eastern Japan Competition.

**Date:** February 11th (Thursday - **Holiday**)

**Time:** Doors 5:30pm, Show 6:00pm

**Venue:** Asahikawa Taisetsu Crystal Hall, Concert Hall (Kagura 3-jo 7-chome)

**Admission:** ¥500

**Ticket Office:** Asahikawa University High School, Yamaha Music, Taisetsu Crystal Hall

**For further information contact:** 0166-48-1221 (Kawashima)



### The 70th Anniversary Exhibition of the New Romantic Art Association 第70回記念 新ロマン派会員・会友展

The New Romantic Art Association will be displaying over 100 paintings, crafts, and sculptures made by 18 friends of the association and 97 of the association's members to commemorate the 70th year of its founding in 1946.

**Date:** February 11th (Thursday - **Holiday**) until February 21st (Sunday)

**Time:** 9:30am until 5:00pm

**Venue:** Hokkaido Asahikawa Museum of Art (Inside Tokiwa Park)

**Admission:** General ¥500; High School and under FREE

\*Notes: Closed on Mondays. No entry after 4:30pm



## Asahikawa Civic Wind Orchestra 16th Regular Concert 旭川シビックウインドオーケストラ 第16回定期演奏会

The Asahikawa Civic Wind Orchestra was started in April 2000 by graduates of Asahikawa Commercial High School (see opposite page!) and Ryouun Senior High School's wind instrument sections. Come see graduates of two notable schools in Asahikawa!

**Date:** February 21st (Sunday)  
**Time:** Doors 1:30pm, Show 2:00pm  
**Venue:** Asahikawa Public Hall (inside of Tokiwa park)  
**Admission:** General ¥ 800 (¥ 1,000 the day of) Elementary School Students FREE  
**Ticket Office:** Yamaha Music Store, Coach and Four, Asahikawa Civic Culture Hall, Takasu Melody Hall



## Music and Ballet Theatre for the Arts Swan Lake 音楽・バレエ 芸術劇場 白鳥の湖

The first half includes a flute and piano performance of Tchaikovsky's Sleeping Beauty acted out by a mime. In the second half, the remaining performers and ballet dancer will take the stage and invite you into the world of "Swan Lake," one of Tchaikovsky's 3 great ballets.

**Date:** February 27th (Sunday)  
**Time:** Doors 6:00pm, Show 6:30pm  
**Venue:** Asahikawa Taisetsu Crystal Hall (Kagura 3-jo 7-chome)  
**Admission:** General ¥ 3,000; Seniors (65 and up)/Disabled ¥ 2,500; Student ¥ 1,500  
¥ 500 surcharge for buying the day of the performance.  
**Ticket Office:** Asahikawa Taisetsu Crystal Hall  
**For further information contact:** 0166-69-2000 Asahikawa (Taisetsu Crystal Hall)  
**Notes:** Free Parking



## Fujiko HEMMING Solo Piano Concert Asahikawa Performance 2016年 フジコ・ヘミング ピアノ ソロ コンサート -旭川公演-

Full Name: Ingrid Fuzjko Von GEORGII-HEMMING. Born in 1950, the daughter of Russian-Swedish Painter and Architect Josta Georgii HEMMING and Pianist OOTSUKI Amiko, she is truly an artist who's veins run with art, talent, and culture.

**Date:** February 28th (Sunday)  
**Time:** Doors 6:30pm; Show 7:00pm; Over around 9:00pm  
**Venue:** Asahikawa Civic Culture Hall, Large Hall (7-jo-dori 9-chome)  
**Admission:** All Seats Reserved: SS Seat ¥ 12,000; S Seat ¥ 10,000; A Seat ¥ 8,000  
**Ticket Office:** Kawai Asahikawa Shop, Yamaha Music Store, Gyokkodo (3rd Floor Aeon Mall), Coach and Four, Ticket Pia (P-code 283-091), Lawson (L-code 15279)  
**For further information contact:** 011-232-1373



## Touching & Looking: Hands-on Enjoyment of Art さわって みて 美術をまるごと楽しもう!

Works of art aren't something you get to touch, but this exhibition is a bit different. Opening boxes, catching the scent of the sculptures, etc. allows you to appreciate these works in their entirety, as opposed to just seeing them.

**Date:** February 28th (Sunday) until March 31st (Thursday)  
**Time:** 9:30am until 5:00pm  
**Venue:** Hokkaido Asahikawa Museum of Art (Inside Tokiwa Park)  
**Admission:** General ¥ 510; High School ¥ 300; Junior High and under FREE  
**\*Notes:** No entry after 4:30pm. Closed on Mondays except for the 21st. Closed on the 22nd.



EVENTS IN ASAHIKAWA FOR FEBRUARY

# Asahiakwa Winter Festival

Its that time of year again everyone!!! The Asahikawa Winter Festival is back, and with it the 2016 International Ice Sculpture Competition and "Snow lights in the Zoo." Although the festival is from the 6th until the 11th of February, there are numerous other winter events that have already begun and some will continue even into March.



**Heiwa-dori Road  
Kaimono-Koen  
Festival Site**

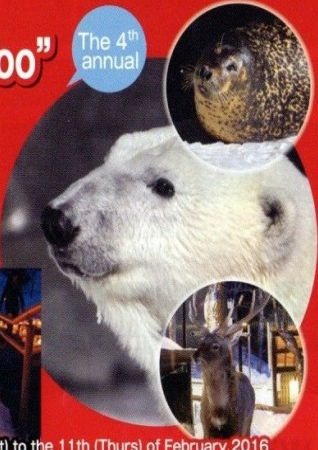
**2016 International Ice Sculpture Competition**

This is the only official international ice sculpture competition held in Japan! The extreme cold of the Asahikawa winter makes it possible to carve ice sculptures so intricately, they look like they could shatter at any moment. These beautiful artworks are carefully crafted over a period of two days, with work continuing on long into the night. Upon completion, the sculptures are illuminated every night for the duration of the festival.

**Carving** - From the 6<sup>th</sup> to the 8<sup>th</sup> of February (Sat - Mon) 7:00~11:00  
**Display** - From the 8<sup>th</sup> to the 11<sup>th</sup> of February (Mon - Thurs [national holiday]) 11:00~22:00

**Asahiyama Zoo Presents "Snow Lights in the Zoo"** The 4<sup>th</sup> annual

"Snow Lights in the Zoo" is an event that is held concurrently with the Asahikawa Winter Festival. Zoo opening hours have been extended until 8:30 p.m. this year. Visiting in the evening allows you to experience the zoo in a different light. Encounter the animals in the dark of the night, and in the peaceful silence of the snow. Many hundreds of ice candles create an ethereal atmosphere that you're sure to remember. Come and experience the beautiful Asahiyama zoo from a different perspective during this special 6 day period.



● **Held** - From the 6<sup>th</sup> (Sat) to the 11<sup>th</sup> (Thurs) of February 2016  
 ● **Opening Hours** / 10:30~20:30 (Last entry is 8pm)  
 ● **Location** - The Asahiyama Zoo (Kuranuma, Higashiasahikawa-cho, Asahikawa City, Hokkaido, Japan)  
 ● **Access** - Take the Asahikawa Denki-kidou bus signed "To Asahiyama Zoo" from the ⑥ bus stop in front of Asahikawa station. This bus goes all the way to the zoo.

Time required: Approximately 40 minutes.

**Inquiries** ▶ The Asahiyama Zoo TEL.0166-36-1104

Kuranuma, Higashiasahikawa-cho, Asahikawa City, Hokkaido, Japan

**Inquiries**

**Asahikawa Winter Festival Executive Committee**

Office - 2nd floor, Asahikawa Food Terrace, 7-Chome, 5-Jo-dori, Asahikawa City, Hokkaido, Japan

**0166-25-7168**

E-mail : [kankou@city.asahikawa.hokkaido.jp](mailto:kankou@city.asahikawa.hokkaido.jp)  
<http://www.city.asahikawa.hokkaido.jp/files/kankou/awf/>

● Asahikawa Tourism and Local Products Information Center **0166-26-6665**

● Asahikawa Tourist & Convention Association **0166-23-0090**

● Asahikawa Airport General Information Desk **0166-83-3716**

Keep an eye put for the Asahikawa Winter Festival Executive Committee's event leaflet around the city in both English and Japanese for the full scoop on all events including a guide map! You can view, download, and even print off the English version from: [http://www.city.asahikawa.hokkaido.jp/files/kankou/awf/leaflet/pdf/leaflet\\_en.pdf](http://www.city.asahikawa.hokkaido.jp/files/kankou/awf/leaflet/pdf/leaflet_en.pdf)



There's much to see and do in winter in Asahikawa!

**The 57th Annual Asahikawa Winter Festival**

Feb 6th ▶ 11th 2016 (Sat - Thurs [national holiday])

Held Concurrently ▶ 2016 International Ice Sculpture Competition

**ASAHIKAWA WINTER FESTIVAL**  
February 6 Sat ▶ 11 Thu, 2016

**Ishikari River Asahibashi Bridge Riverside Festival Site**

**Welcome to Asappi-Land!**

There's one of the biggest snow sculptures in the world, and lots of fun winter activities to enjoy at this winter wonderland! The fantastic and mystical light and sound show at night is not to be missed!

**Lots of fun events!**

There's lots to see and do here at the Asahikawa Winter Festival!

**Hands-On Activities**

**Delicious Ramen!**

**Winter Marche**

**There's even a giant ice slide!**

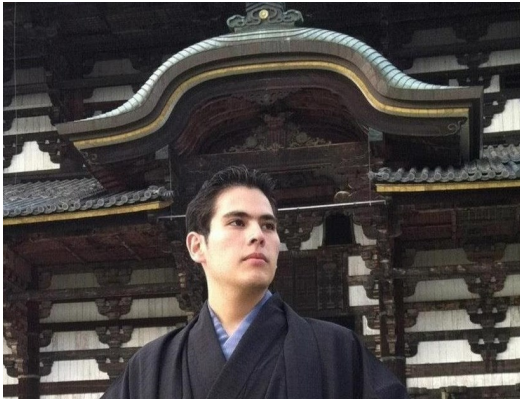
**There's one of the biggest in the world!**

**Beautiful Snow Candles**

Various places all over the city are lit up with the soft, gentle light of ice candles and sculptures.

**Beautiful fairy light illuminations light up the city**

These beautiful illuminations light up the center of Asahikawa during the winter. Come and enjoy the magical and romantic snowy ambience of this frozen northern wonderland.



## Hello Asahikawa!

**Name:** Steven Suarez

**Hometown:** Gastonia, North Carolina, USA

**Interviewed:** January 20th, By AIC

**AIC:** So how did you first get interest in Japan?

**Steven:** My interest in Japan first began back when I was in high school. When I was a sophomore, I suddenly decided to learn a new language, but I couldn't decide between Chinese and Japanese. Having lived in NYC, I had come into contact with many cultures and I had always been fascinated by Asian cultures the most. In the end, I chose Japanese because, to me, Chinese seemed too common. From my experience, a lot more people could speak and understand Chinese. Of course, Chinese is a very profitable language to know especially for those who are interested in business. Yet, what I began to realize is that not many people at all knew of Japan, let alone, could speak Japanese. In a sense, to many people overseas, Japan is a mystery island and that is what ultimately made me decide to study Japanese over Chinese. I thought it would be a great challenge. Then, by a stroke of luck, I was introduced to a Japanese restaurant whose owner gave Japanese lessons once a week. Although the restaurant was an hour away from my house and the lessons were only for an hour on Monday, I made up my mind to go. It only took one Japanese lesson, and I was completely fascinated by Japan and its beautiful language. From that very first lesson on, I made it my goal to learn Japanese and to come to Japan no matter what I had to do.

**AIC:** Is this your first time outside of your home country?

**Steven:** No, this is not my first time out of my home country. I was born in Colombia, South America, so my first time out of my home country was when I was about 5 years old. Around that time, my parents decided to move to the U.S. Since then, I have been to Canada, Jamaica, and Russia. I have been to Japan previously as well, about three years ago now, when I went to Osaka to study abroad for a year.



Steven  
Interview (Part 2)  
Continued from  
Page 5



- AIC:** **So what are some parallels you found between Asahikawa and home?**
- Steven:** It is a bit difficult to compare an entire state with one city, but Asahikawa and North Carolina share a few similarities. Both places are heavily reliant on agriculture and as a result there are a lot of wide, open areas used for agriculture. Both places are renowned for their beautiful nature, especially their mountains. Lastly, both Asahikawa and Gastonia (my home town) are considered to be cities despite their small size.
- AIC:** **And the differences?**
- Steven:** There are a lot of differences. For example, Asahikawa is much, much colder and it snows a lot. If it were to snow that much in North Carolina, people would be panicking thinking that the world had come to an end.  
Furthermore, Asahikawa is much more convenient. Though not as extensive as Sapporo, or Tokyo for that matter, the public transportation system is very good in Asahikawa. Unfortunately, there are no trains connecting the different towns in North Carolina and buses are not a common sight. If you want to get anywhere, you need to have a car, even if you are simply going to the mall. As many can imagine, there are no hot springs and the food is completely different.
- AIC:** **So how have you been progressing language wise?**
- Steven:** I would like to say that I speak Japanese, but I do not think that my current Japanese skills are good enough for me to say with confidence that I can speak Japanese well. I am fluent in both English and Spanish and I am currently learning Russian, though my knowledge of the Russia language extends merely to greetings and simple, short sentences.
- AIC:** **That's still awesome. Are there any words you like or that you find convenient in Japanese?**
- Steven:** My favorite Japanese phrase is 単刀直入 (*tantōchokunyū*) - "going right to the point; point-blank; without beating about the bush; frankness." I really like how the Kanji perfectly portray the image and feeling of being brutally honest with someone. The most convenient is やっぱり (*yappari*) - "as expected, etc." since it can be used in so many ways.
- AIC:** やっぱりそうですね。 "Oh yea, for sure."
- Steven:** (laughs) Yep, just like that.

# Asahikawa!



**AIC:**

**So what are your hobbies?**

**Steven:**

My main hobbies are eating and cooking. I really enjoy trying new foods and I am willing to try anything at least once. That is why I was so happy when I learned about the Lunch Passport. It was the perfect way for me to be able to go to new restaurants and try new foods for a very low price. Since I like to eat, cooking is a very useful hobby and it is a way for me to de-stress. I am enrolled in ABC Cooking School and I am trying my best to learn how to prepare Japanese food. My goal is to make my own Ramen broth and to be able to make O-sechi in the future.

**AIC:** But can you eat *Natto* ? You know it is very important that you eat *Natto*.

**Steven:** Yes, I can. But it has to be on rice, mixed with a raw egg and wrapped in seaweed.

**AIC:** You are a braver soul than I. Would you happen to have any non-food related hobbies?

**Steven:** My other hobbies include reading books and watching movies. Though I have not read many books or watched many Japanese movies, my favorite Japanese book at the moment is "Battle Royale," and my favorite movie is "Kokuhaku."



**AIC:** And what about winter sports?

**Steven:** Since I am living in Hokkaido, I thought it would be great to pick up a new hobby, so I recently began to snowboard. Though I fell a thousand times and was extremely sore, snowboarding is a lot of fun. I plan to get a lot better and enjoy the amazing snow in Furano this year.

# Hello Asahikawa!

## Steven Interview (Part 3) Continued from Page 7

**AIC:** So how long do you plan on being in Asahikawa by the way?

**Steven:** To be honest, I am not really sure how long I will be in Asahikawa. That really depends on many factors that, to be frank, are not in my control. So I plan to enjoy Asahikawa as much as I can while I am here.

**AIC:** Alright, and finally, the question on everyone's mind: Do you like Karaoke?

**Steven:** Yeah, Karaoke is a lot of fun! Unfortunately, I have not been to Karaoke a lot this past year, but when I do go, we usually sing for the entire night. Karaoke is definitely one of my favorite past time activities, though I feel bad for those who go to Karaoke with me since I am such a terrible singer.

**AIC:** Well Steven, thank you for letting me interview you!

**Steven:** Thank you very much for taking the time to interview me!



## ★ *Movies ~ February* ★

\*The 1st day of every month is "Movie Day" in Asahikawa. Admission (tax included) is ¥1,100 for Adults, ¥800 for High School Students and Under at all theaters.

\*<Aeon Cinema Only> Every Monday is "Happy Monday." Admission is ¥1,100 (tax included) for all.

★ **Aeon Cinema:** Miyashita-dori 7-chome / ☎ 74 - 6411  
URL: [cinema.aeoncinema.com/wm/asahikawa](http://cinema.aeoncinema.com/wm/asahikawa) (Japanese)

### Now Showing

- The Walk (English)
- Nobunaga-Concerto (Japanese)
- In the Heart of the Sea (English/2D/3D)
- Noyounamono no younamono (Japanese)
- Sindbad Mahono Lamp (Japanese/Animation)
- PADDINGTON (English/Animation)
- Bridge of Spies (English)
- Jinsei no Yakusoku (Japanese)
- Chibimarukochan (Japanese/Animation)
- Creed (English)
- Hanachan no Misoshiru (Japanese)
- Star Wars: The Force Awakens (English/2D/3D)
- Yokai-Watch the Movie (Japanese/Animation)

### Coming Soon

- The Martian (English) 2/5
- The Farewell Party (English) 2/6
- Straight Outta Compton (English/R15+) 2/6
- The Gunman (English/PG12+) 2/6
- Dragon Blade (China/PG12+) 2/12
- Sherlock: The Abominable Bride (English) 2/19
- Hotel Transylvania 2 (English) 2/20
- Point Break (English) 2/20
- The Finest Hours (English) 2/27



## ★ *Movies ~ February* ★

\*<Cineplex 7 Asahikawa and Dinos Cinemas Only> Every Wednesday is “Ladies’ Day.” Admission is ¥1,100 (tax included) for women at all theaters.

\*<Dinos Cinemas Only> Every Thursday is “Men’s Day.” Admission is ¥1,100 (tax included) for men.

★ **Cineplex 7 Asahikawa:** Nagayama 12-jo 3-chome Western Powers Nagayama / ☎ 49 – 1000

URL: <http://www.kadokawa-cineplex.co.jp/asahikawa/> (Japanese)

**Directions:** Take Dohoku Bus No. 66, 72 or 665 at Bus stop No. 18 in front of Feeeal Asahikawa Department Store (1-jo-dori 8-chome). Get off at “Nagayama 10 (ju)-jo 3 (san)-chome.”

### Now Showing

- Kamen Rider the Movie Ghost&Drive (Japanese)
- Nobunaga-Concerto (Japanese)
- The Walk (English)
- Haiyu Kameoka Takuji (Japanese)
- In the Heart of the Sea (English/2D/3D)
- Les Saisons (English)
- PADDINGTON (English/Animation)
- Bridge of Spies (English)
- Jinsei no Yakusoku (Japanese)
- Creed (English)
- Yokai-Watch the Movie (Japanese/Animation)
- Star Wars: The Force Awakens (English/2D/3D)
- Orange (Japanese)
- Haha to Kuraseba (Japanese)
- Sugihara Chiune (Japanese)
- Spectre (English)

### Coming Soon

- The Martian (English) 2/5
- The Farewell Party (English) 2/6
- Straight Outta Compton (English/R15+) 2/6
- Hotel Transylvania 2 (English) 2/20
- The Finest Hours (English) 2/27

★ **Dinos Cinemas:** Taisetsu-dori 5-chome / ☎ 21 – 1218

URL: [http://www.geodinos.jp/cinema/asa\\_schedule.php?StoreID=5](http://www.geodinos.jp/cinema/asa_schedule.php?StoreID=5) (Japanese)

**Directions:** Take Dohoku Bus No. 61, 62, 67 or 667 at Bus stop No. 18 in front of Feeeal Asahikawa Department Store (1-jo-dori 8-chome). Get off at “Nippon Seishi mae.”

### Now Showing

- Nobunaga-Concerto (Japanese)
- Memories of the Sword (Korean)
- The Walk (English)
- High★Speed Free! Starting Days(Japanese/Animation)
- In the Heart of the Sea (English/2D/3D)
- Les Saisons (English)
- Bridge of Spies (English)
- Creed (English)
- Yokai-Watch the Movie (Japanese/Animation)
- Haha to Kuraseba (Japanese)
- Orange (Japanese)
- Star Wars: The Force Awakens (English/2D/3D)
- Sugihara Chiune (Japanese)

### Coming Soon

- The Martian (English) 2/5
- The Gunman (English/PG12+) 2/6
- Dragon Blade (China/PG12+) 2/12
- Sherlock: The Abominable Bride (English) 2/19
- Point Break (English) 2/20
- The Finest Hours (English) 2/27

Movie schedules change often. Please call the theater for confirmation and details.

# International Communi-tea Yuki no Mura Snow Village

The Asahikawa International Center invites all local and foreign residents of Asahikawa to join us for tea and friendly conversation at this month's event. This is a perfect chance to get to know other members of the community as well as sharing your interests, thoughts and culture with people from around the world.



**Date:** February 25th (Thursday)  
**Time:** 1:00pm to 2:00pm; 6:30pm to 7:30pm  
**Admission:** FREE  
**Venue:** Asahikawa International Center  
 (1-jo-dori 8-chome Feeeal Asahikawa)  
**Contact:** AIC (25-7491)



A winter amusement park! Numerous attractions like snow mobiles, snow-rafting, snow banana tubing, snow cat tours, and more!

**Date:** Now until March 6th (Saturday)  
**Time:** 10:00am to 4:00pm (Until Sunset)  
**Venue:** Outside of Asahiyama Zoo East Side Entrance  
**Notes:** Free Parking. Prices vary by attraction. Attractions may close depending on the weather.

Interesting activities, such as quizzes, discussions, songs, games, handcrafts and many more, all in English! Come meet new people, relax, and relate on Fun Fridays!

## FUN FRIDAYS

**Dates:** February 12th&26th, March 11th&25th, April 8th&22nd  
 \*Fun Fridays are held only on the 2nd Friday of every month for the evening session (2 hours)  
**Time:** 1:00-2:00pm & 6:30-8:30pm  
**Location:** Asahikawa International Center, Common Meeting Room (1)  
 (Feeeal Asahikawa 7F 1-jo-dori 8-chome)  
**Charge:** ¥1,500 for 3 months (Free for volunteer leaders)

The AIC offers many services to make your life in Asahikawa more enjoyable. Here are just a few:

**Volunteer Guide:** Volunteers are registered to help translate and interpret.

**Event Volunteer:** The AIC plans many exciting events throughout the year, such as Friendship Parties. Why not become a volunteer and help plan these events?

**Homestay:** Families are registered to welcome you into their homes for an overnight stay or just for an afternoon visit.

**For further information or to register, please contact AIC.**



The Asahikawa International Center (Feeeal Asahikawa 7F 1-jo-dori 8-chome) has free wifi available for public use free of charge. Registration for a user card is needed, if you are residing in Asahikawa. Please feel free to come by anytime, as well as check out some of the other services and activities available at the Asahikawa International Center .

## Spread the Word...

Contribute to the AIC newsletter and share any interesting information you may have with other readers. You may write on any topic including, items to buy or sell, offers for culture/language exchanges, or write an essay about your life in Asahikawa or your hometown. The article should not be profit related! Please send your submissions to us at the AIC.



Asahikawa International Committee  
 Asahikawa International Center Feeeal Asahikawa 7F, 1-jo-dori 8-chome, Asahikawa 070-0031  
 Tel: (0166) 25-7491 Fax: (0166) 23-4924  
 E-mail: cir\_kokusai@city.asahikawa.hokkaido.jp

**\*\*The opinions expressed in the essays are those of the writers and do not necessarily reflect the opinions of the Asahikawa International Committee or the City of Asahikawa.\*\***