

# 旭川 ASAHIKAWA Info

May 2011 VOL. 174

Also visit us at: [www.city.asahikawa.hokkaido.jp/files/kokusaikouryu/english/index.html](http://www.city.asahikawa.hokkaido.jp/files/kokusaikouryu/english/index.html)



## Hokkaido News Top 5



May 2011

Compiled by TAKADA Nobuhiro

### March 27

The City of Asahikawa has sent relief supplies to the City of Morioka in Iwate Prefecture and the City of Iwaki in Fukushima Prefecture. Both cities have been affected by the March 11<sup>th</sup> Eastern Japan Earthquake. The ten tons of relief supplies which include daily commodities and food items, had been donated by citizens, companies and associations in Asahikawa. They hope to help people affected in the both cities, which are like Asahikawa “core cities in Japan.”

### April 7

A hunter witnessed a white Ezo-shika deer in a meadow in Tsurui Village on March 30<sup>th</sup> and April 5<sup>th</sup>. The 60-year-old hunter said that it was the first time for him to see a white deer in his 40-year career as a hunter. A white deer is considered to be a messenger of the gods, so hunters are not allowed to shoot these deer. The village of Tsurui is also famous for Japanese red-crown cranes.

### April 7

The number of visitors to Asahiyama Zoo from November 1<sup>st</sup> to April 7<sup>th</sup> was 453,812. It is a considerable decline of about 140,000 visitors from the same period of the previous year. The March 11<sup>th</sup> Eastern Japan Earthquake was a factor in the decline of visitor numbers to the zoo.

### April 13

Skymark Airlines has announced that they are going to open four new routes from Narita to Asahikawa, New Chitose, Fukuoka, and Naha. The new domestic airline routes will open from the coming October to February. The airline company plans to sell 20 plane tickets for the price of ¥980 per flight for the first three months following the opening of each of the new routes.

### April 17

The City of Asahikawa has started giving out a “Footpath Guide Map of Asahikawa.” There are six footpaths on the map. The first course is in downtown, the second is around a wildflower garden in Arashiyama, the third is in the countryside, the fourth is visiting ruins, the fifth is along the Chubetsu River, and the last is to a pasture. The footpath guide map is given out at the tourist information center at JR Asahikawa Station and the Tourism Division of the city hall.



#### For further information or to register for events contact:

Asahikawa International Committee  
(SASAKI Mai, Sergej NESIC, or SAITO Emmy)

#### Location:

International Affairs Division, Civic and Community Services Dept.

#### Address:

Third Office 1F, Asahikawa City Hall, 6-jo-dori 10-chome, Asahikawa 070-8525

Tel: (0166) 25-7491

Fax: (0166) 23-4924

#### E-mail:

cir\_kokusai@city.asahikawa.hokkaido.jp

### Inside This Issue...

<b>Hokkaido News Top 5</b> <i>By TAKADA Nobuhiro</i>	1	<b>Restaurant Review</b> “Machi Bar” <i>By AIC</i>	7
<b>Upcoming Events</b>	2-3	<b>Hello Wildflowers</b> “Akitavuki” <i>By KUDOH Hitoshi</i>	8
<b>Hello Asahikawa</b> “Balde Cellou” <i>By TAKADA Nobuhiro</i>	4-5	<b>Movies</b>	9
<b>Life in Asahikawa</b> “Start Of The Flower Season” <i>By KITAMURA Tadao</i>	6	<b>Bulletin Board</b>	10

Special Thanks to KAWAI Tatsuo  
Proofreader & Advisor

## THE GREAT EASTERN JAPAN EARTHQUAKE CHARITY CONCERT

## 東日本大震災支援 チャリティーコンサート

A joint concert of five brass orchestras from which all proceeds will go to the Japanese Red Cross Society's Great Eastern Japan Earthquake Emergency Relief. The bands participating will be Asahikawa Commercial High School Brass Band, Asahikawa Midorigaoka Junior High School Brass Band, Asahikawa Ryouin High School Brass Band, Asahikawa Toei High School Brass band, and Asahikawa Youth Brass Band.

**Date:** May 5th (Thursday-Public Holiday)

**Time:** Doors 2:00pm, Show 2:30pm

**Venue:** Asahikawa Civic Culture Hall (7-jo 9-chome)

**Admission:** General ¥500

**Ticket Office:** Yamaha Music Asahikawa Store, Asahikawa Civic Culture Center, Asahikawa Taisetsu Crystal Arena

**For further information contact:** 080-2873-7700 (HATAYAMA)



## THE DUKE ACES CONCERT

## デューク・エイセス コンサート

Come and enjoy the tantalizing harmonics of this legendary male vocal quartet. The original Duke Aces was formed in 1955 with various line up changes over the years. They've made numerous TV and radio appearances, as well as lending their vocals to dozens of TV commercials. Their repertoire includes over 1,500 Japanese and foreign songs.

**Date:** May 19h (Thursday)

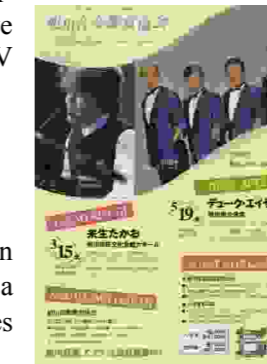
**Time:** Doors 6:15pm, Show 7:00pm

**Venue:** Asahikawa Public Hall (Tokiwa Park)

**Admission:** Duke Aces concert is being sponsored by the Asahikawa Music Appreciation Society. Groups of 3 or more can join the society for ¥2,000 (students ¥1,000), with a monthly fee of ¥2,000 (students ¥1,000). Members have access to all performances sponsored by the society, including the Duke Aces.

**Ticket Office:** Asahikawa Music Appreciation Society

**For further information contact:** 22-5367 (Asahikawa Music Appreciation Society)



## 12TH ANNUAL ASAHIKAWA CITIZEN BAND FESTIVAL

## 第12回旭川地区市民バンドフェスティバル

The great swing jazz sound of the Asahikawa Citizen Band is described as "a blend of powerful, rhythmic, and beautiful sounds that will make your heart dance and draw you into the world of swing." A must for lovers of swing jazz and the big band sound.

**Date:** May 22nd (Sunday)

**Time:** Doors 5:30pm, Show 6:00pm

**Venue:** Asahikawa Civic Culture Hall (7-jo 9-chome)

**Admission:** General ¥500

**Ticket Office:** Yamaha Music Asahikawa Store

**For further information contact:** 080-2873-7700 (HATAYAMA)



## "GRAZY FOR YOU" SHIKI THEATER COMPANY

## 「クレイジー・フォー・ユー」劇団四季

Billed as "The New Gershwin Musical Comedy," this happy love story is set in 1930's New York and Deadrock, Nevada. Bobby, a banker from New York falls in love with small-town Polli and the plot thickens. The original musical was written by George and Ira Gershwin, based on the book by Ken Ludwig, and performed by Japan's most popular theater company.

**Date:** May 29th (Sunday)

**Time:** Doors 5:00pm, Show 5:30pm

**Venue:** Asahikawa Civic Culture Hall (7-jo 9-chome)

**Admission:** SS-Seats ¥8,000, S-Seats ¥6,500, A-Seats ¥5,000, B-Seats ¥3,000

**Ticket Office:** JR Asahikawa Station, Twinkle Plaza Asahikawa, FM Riberu, Gyokkodo, ticket PIA

**For further information contact:** 55-1443 (Asahikawa Dream No Kai)

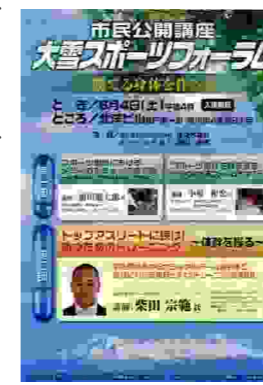


## TAISETSU SPORTS FORUM PUBLIC LECTURE

### 市民公開講座 大雪スポーツフォーラム

A two part lecture titled “Let’s Build A Winning Body” featuring experts in the field of sport therapy and injury prevention and treatment. In the first part of the lecture MAEDA Kensaburo from Toyooka Central Hospital will talk on the spot injury diagnosis, prevention and treatment. Also, KOHARA Kazuhiro, from Asahikawa Medical School, will talk about sport performance and the science behind achieving top form. In the second part of the lecture SHIBATA Munenori, trainer of the Japanese Junior Women Volleyball Team, will talk about training essential for success in top level competition.

**Date:** June 4th (Saturday)  
**Time:** 1st Part 4:00pm, 2nd Part 4:30pm  
**Venue:** Hokuyou Building 8F (4-jo 9-chome)  
**Admission:** Free



## ASAHIKAWA PHILHARMONIC ORCHESTRA’S VOL.3 SCREEN MUSIC CONCERT

### 旭川フィル 名曲コンサート Vol3. スクリーンミュージック

Affectionately known as “Asahikawa Phil” this superb ensemble is once again dedicating their performance to the very popular theme of music from famous films. This, their third performance in this series, will feature music from such films as “The Pirates Of The Caribbean,” “Cinderella’ Story,” “West Side Story,” “Tonari No Totoro,” and more.

**Date:** May 8th (Sunday)  
**Time:** Doors 2:30pm, Show 3:00pm  
**Venue:** Asahikawa Civic Culture Hall (7-jo 9-chome)  
**Admission:** General ¥1,000, High School Students & Under ¥500  
**Ticket Office:** Asahikawa Civic Culture Hall, Asahikawa Crystal Hall, Yamaha Music Asahikawa Store  
**For further information contact:** 090-9757-1457 (ABE)



## EXHIBITION OF ORIGINAL WORKS FROM THE KEMBUCHI PICTURE BOOK HALL

### 剣淵町 絵本の館コレクション

In 1988 the youth of Kembuchi (located around 50km north of Asahikawa) decided to embark on a project named “ Let’s Build The Kembuchi Picture Book Village,” resulting in the opening of The Kembuchi Picture Book Hall in 2004. Over the years the gallery has collected over 1,000 of original drawings for picture books from Japan and all over the world.

**Date:** Now to May 22nd (Sunday)  
**Time:** 9:30am~5:00pm (last entry 4:30pm) Museum is closed on Mondays  
**Venue:** Hokkaido Asahikawa Museum of Art (Tokiwa Park)  
**Admission:** General ¥800(\* for groups of over 10 people ¥600) High School Students ¥500 (\* ¥400,) Junior High & Elementary School Students ¥300 (\*¥200).  
**Ticket Office:** Hokkaido Asahikawa Museum of Art  
**For further information contact:** 25-2577 (Hokkaido Asahikawa Museum of Art)



## “THE NEWSPAPER” COMEDY TROUPE

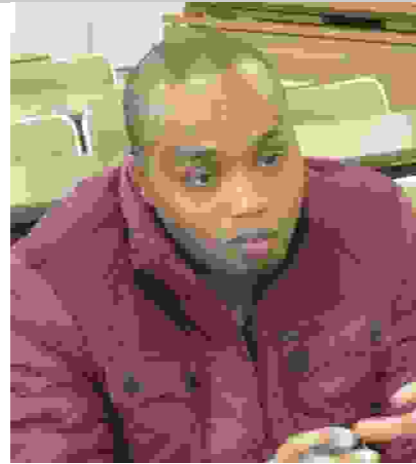
### 社会風刺コント集団「ザ・ニューズペーパー」

The comedians from The Newspaper are back in Asahikawa bringing their unique take on Japanese politics and current affairs. This season’s political line up will include the impersonations of Prime Minister KAN, former Prime Ministers KOIZUMI and HATO-YAMA, and the rest of the Diet heavyweights. Also, president Obama will make a special appearance. A guaranteed night of laughs.

**Date:** June 6th (Monday)  
**Time:** Show 6:30pm  
**Venue:** Asahikawa Civic Culture Hall (7-jo 9-chome)  
**Admission:** General ¥4, 500  
**Ticket Office:** Gyokkodo, Ticket PIA, Lawson Ticket  
**For further information contact:** 011-261-9991 (Trust Kikaku Create)



EVENTS IN ASAHIKAWA FOR MAY



# Hello Asahikawa!

**Name: Balde Cellou**

**Hometown: Mamou, Republic of Guinea**

**Interviewed: 16th March, 2011**

**By TAKADA Nobuhiro (AIC)**

**AIC:** *What do you do here in Asahikawa?*

**Balde:** At the moment I'm working for a firm called "Greentex." We're involved in producing and selling products used in organic agriculture. We also grow an organic brand of garlic called "Hikoichi Ninniku." It was believed that garlic could not be grown organically but we've proved that wrong with this high quality product grown here in Asahikawa.

**AIC:** *Do you export "Hikoichi Ninniku" garlic?*

**Balde:** Well, right now our farm is not so big, so we're only supplying the domestic market. However, in the coming years we're looking at expanding into the international market, primarily China and other Asian countries.

**AIC:** *So you have your own farm in Asahikawa?*

**Balde:** Yes, we have a farm in Daiba (south-west Asahikawa) where we grow organic vegetables as well as "Hikoichi Ninniku" garlic.

**AIC:** *How large is your farm?*

**Balde:** It's only around three hectares. We also produce and sell organic fertilizer and an organic compost called "Gomi Up." You sprinkle a bit of "Gomi Up" on your domestic raw garbage and in six to ten days it turns into organic fertilizer. It's great for the environment as it reduces waste and the use of chemical fertilizers. For those with pets, you can also use "Gomi Up" to convert your pet's litter into fertilizer while also eliminating the bad smell. Another product we produce is "Do Up" organic fertilizer which can be used to help grow any kind of plants and great tasting vegetables. Of course it also helps save energy that goes into garbage storage and disposal.

**AIC:** *Why did you decide to start working in Greentex?*

**Balde:** I was very interested in their products because they're so practical and good for the environment. I see great potential for these kinds of products in the future not just in Japan but internationally too. One of my goals is to introduce Greentex products to Africa, as I believe that they're ideal for small scale agriculture. I see it as very important for future organic farming in Africa. Actually, our motto is "garbage can save the earth." Before I joined Greentex I ran a clothing store in downtown Asahikawa. I ran the store for six years and it was a great experience. However, in the last couple of years business had really dropped due to the tough economic situation that gripped this region.

**AIC:** *What kind of clothing store was it?*

**Balde:** We stocked street and urban style clothes, such as brand name Hip-Hop gear from the US. The business was really good in the first couple of years, as that style of clothing is very popular in Japan, especially with the younger generation.

**AIC:** *When did you first arrive at Asahikawa?*

**Balde:** I first arrived around eight years ago. I came to Asahikawa with the intention of starting my clothing business.



*Continued from Page 4*

**AIC:** *Why did you choose to start your business in Asahikawa?*

**Balde:** At that time there weren't many clothing stores of this kind in Hokkaido, especially in northern Hokkaido. In places like Tokyo and Osaka there are plenty of street style clothing stores, so opening one there was not a good idea. I figured that Hokkaido would be the ideal place to open up a store. When I first came to Japan I lived in the Kansai region close to Osaka and that's where I became interested in the Hip-Hop clothing business.

**AIC:** *Tell us a little about your home-country?*

**Balde:** I'm from the Republic of Guinea. Guinea is located in western Africa and borders Guinea-Bissau, Senegal, and Mali in the north and Ivory Coast, Sierra Leone, and Liberia in the south. The population of Guinea is around 10 million and is made up of 24 different ethnic groups, with the most prominent being Fula, Mandinka, and Susu. Islam is the main religion with over 90% of the population being Muslim. It's quite a large country, about 250,000 square kilometers in total divided into four regions with the City of Conakry as the national capital. Guinea used to be colonized by the French from 1890's as part of what was then French West Africa. We gained our independence on October 2nd, 1958. However, French is the official language because we have a number of indigenous languages which are all very different, so people from different regions can't understand each other. So, other than English I speak French, my local language, and I read and write Arabic. We have the second biggest reserves of bauxite in the world, after Australia. We also have diamonds, gold, silver, uranium and many precious gems such as sapphires, rubies, etc. In fact it is believed that there are a number of resources in Guinea that haven't even been discovered or exploited yet. So the Republic of Guinea is a very resource rich nation but so much of it is yet to be discovered. A few years ago a group of Russian scientists conducted research and found offshore deposits of oil.

**AIC:** *Tell us a little about your hometown?*

**Balde:** I'm from Mamou region in the north of the country. It's predominantly an agricultural region. You can find vast hectares of tomatoes, potatoes, and other vegetables. In my hometown we grow the hottest kind of chili in Guinea. Guinea is also an exporter of tropical fruits such as bananas, pineapples and various kinds of mangoes, as well as small quantities of rice.

**AIC:** *Your hometown sounds a little bit like Asahikawa.*

**Balde:** Kind of, however, it's much smaller than Asahikawa. Actually, I really like living in Asahikawa, even though the economic situation worsened in the last few years I did my best to stay and live here. To me Asahikawa is a perfect city, not too small and not too big and very comfortable for family life. Also, I enjoy working in Greentex because they have a long term vision for their business and are actively looking to expand internationally. We're already involved in organic farming in China and in the next few months we will start a project in the Philippines. Japanese agricultural technology is very sophisticated and Greentex is working at introducing these methods to developing countries. Thanks to this I feel very positive about my future in this city.

**AIC:** *Well, thank you very much for your time Cellou.*

**Balde:** Thank you.

**Republic of Guinea**



# Life In Asahikawa

## THE START OF THE FLOWER SEASON

By *KITAMURA Tadao*

Henry David Thoreau (1817~62), was a 19<sup>th</sup> Century American sage, poet and naturalist, who led his hermit life by a pond called Walden in the woods of Concord, Massachusetts. He pursued the simple life in harmony with nature in a humble cabin which he built by himself. In his masterwork "*Walden*" he described in detail the changing seasons, plant and animal life, insects, birds, and anything else that caught his eye in the pristine nature that surrounded him.

Walden pond is located on almost the same latitude as Asahikawa. Therefore it's interesting to compare the two natural environments.

He put it like this: Early in May, the oaks, hickories, maples and other trees, started leafing out amidst the pine forest around the pond. They brought brightness, akin to sunshine, to the landscape. Especially on cloudy days, it seemed as if the sun was breaking through the mists and shining faintly on the hillside.

Here in Asahikawa also, May blesses the trees in forests with vernal energy. The trees on hillsides begin to add their brightness more and more by each day. Tree species are somewhat different in Concord and Asahikawa; in Concord there are red-oaks and in Asahikawa *Mizunara*. Maples of Concord are sugar-maples and *Itaya* in Asahikawa. However, here and Concord the twigs of these deciduous trees filled with flesh sap, radiate a colorful splendor of spring.

You might see the first colors of early spring probably on *Arashiyama*, a hill in western Asahikawa. It would be the flowers of *Kita-Kobushi*, or *Magnolia kobus var. borealis*. A fragrant creamy-white flower blooming on top of these tall trees. People are very pleased to see them, as it is a sure sign that the long awaited spring is here at last.

A week to ten days later, cherry blossoms (*Ezo-yama-zakura*), or *Prunus sargentii Rheder*, will start to bloom. An affluent pinkish white covers the whole mountainside. People come together to enjoy flower-viewing (*O-hanami*). It is the curtain raiser for this land's big flower-show.

During some days in early May, you can see pretty little nymphs flying only above the sunny hillside of *Arashiyama*. They are butterflies, *Hime-gifuchou* (*Luehdorfia puziloi yessoensis*) a rather small species with a wing span of 25-32mm that resembles a swallowtail. As a caterpillar it feeds solely on a plant called *Okuezo-saishin* (*Asiarum heterotropoides*) which is very rare to find in other woods. They enjoy their very short life flying with colonies of other Spring-fairies, such as *Katakuri* (*Erythronium japonica*) and *Ezo-engosaku* (*Corydalis ambigua*).



# Restaurant Review

## MACHI BAR By AIC



If you've walked down Kaimono Koen Shopping Street lately you've bound to have noticed the Mediterranean style eatery Machi Bar. From the outside its open front makes it quite enticing to the curious passerby.

So when our division organized a party to see off one of our members and welcome her successor, we chose Machi Bar.

We ordered a ¥5,000 per/head course which consisted of seven different savory dishes, including salad, and two desserts. The course also included a 90-minute all you can drink menu that offered various cocktails, mixed drinks, and beer (including the hard to find Kirin Braumeister).

Machi Bar is a perfect spot to drop in anytime of the day or night if you fancy a Parisian atmosphere with good food and drink, and a great view of Kaimono Koen Shopping Street.

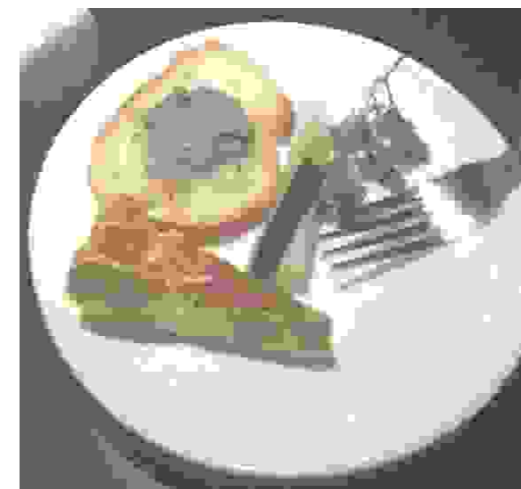
**Address:** Asahikawa City 2-jo 8-chome  
(Kaimono Koen Shopping Street)  
**Operating Hours:** 11:00am ~ 11:00pm (12:00am  
on a night before a Public Holiday)  
**Contact:** 23-5977  
machibar@momendoki.co.jp



**Avocado, Bread, and Mozzarella Cheese Gratin**



**Tomato and String Pea Paella**



**Ham and Potato Frittata,  
Pickled Vegetables, and Pate on Toast.**

# Hello Wild Flowers

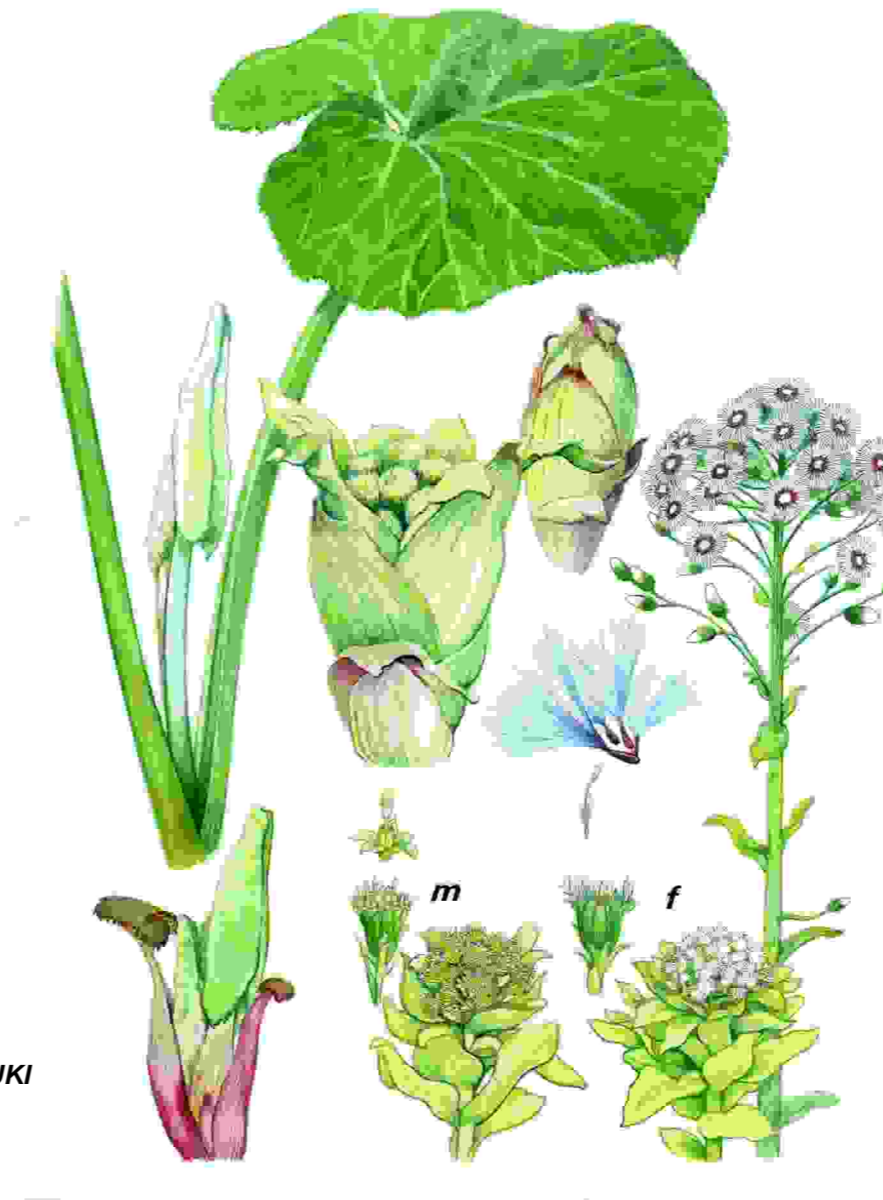
## Wandering among the Wild Flowers around Asahikawa By Hitoshi KUDOH

AKITAVUKI (秋田蓴) *Petasites japonicus* v. *giganteus*  
family Compositae  
Common name: Japanese Butterbur

Flower-heads appear in late winter. They are called “Fuki-no-Tou.” Male and female flower-heads are borne on separate plants.

Male flower-heads are yellowish, and have mostly tubular florets with few rays. They fade away in early spring.

Female flower-heads are white, and have many thread-like styles. They grow to 1.5 meter or more till they bear fruit clusters. The fruit is a typical clock.



A Watercolor Painting of AKITAVUKI  
By Hitoshi KUDOH



## **Movies ~ May**

\*Every Wednesday is "Ladies' Day." Admission is ¥1,000 (tax included) for women at all theaters.

\*The 1<sup>st</sup> day of every month is "Movie Day" in Asahikawa. Admission (tax included) is ¥1,000 for Adults, ¥800 for Senior High School Students and Under at all theaters.

★ **Cineplex 7 Asahikawa:** Nagayama 12-jo 3-chome Western Powers Nagayama / ☎ 49 – 1000

URL: <http://www.kadokawa-cineplex.co.jp/asahikawa/> (Japanese)

**Directions:** Take Dohoku Bus No. 66, 72 or 665 at Bus stop No. 18 in front of Marui Imai Department Store (1-jo-dori 8-chome). Get off at "Nagayama 10 (ju)-jo 3 (san)-chome."

### Now Showing

- Let's Go Kamen Riders (Japanese/Animation)
- The King's Speech (English)
- Mars Needs Moms (English/Animation 3D)
- Manzai Gang (Japanese)
- Precure Allstars DX3 (Japanese/Animation)
- SP-Revolution (Japanese)
- The Rite (English)
- Doraemon - Nobita To Tetsujin Heidan (Japanese/Animation)
- Tangled (English/Animation)
- Gantz Perfect Answer (Japanese)
- The Chronicles of Narnia (Japanese)
- Agora (English)
- Kore Deiinoda - Akatsuka Fujio The Movie (Japanese)
- Mahoro Ekimae Benriken (Japanese)
- Gulliver's Travels (English 3D)
- Detective Conan - Quarter Of Silence (Japanese/Animation)
- Crayon Shinchan - Arashi O Yobu Ougon No Spy Daisakusen (Japanese/Animation)
- Tofu Kozo (Japanese/Animation 3D)

### Coming Soon

- Pirates Of The Caribbean - On Stranger Tides (English)
- Gaku (Japanese)
- Black Swan (English)

★ **Dinos Cinemas:** Taisetsu-dori 5-chome / ☎ 21 – 1218

URL: [http://www.geodinos.jp/cinema/asa\\_schedule.php?StoreID=5](http://www.geodinos.jp/cinema/asa_schedule.php?StoreID=5) (Japanese)

**Directions:** Take Dohoku Bus No. 61, 62, 67 or 667 at Bus stop No. 18 in front of Marui Imai Department Store (1-jo-dori 8-chome). Get off at "Nippon Seishi mae."

### Now Showing

- Onigamiden (Japanese/Animation)
- The Rite (English)
- One Piece 3D - Mugiwara Chase (Japanese/Animation)
- SP-Revolution (Japanese)
- Let's Go Kamen Riders (Japanese/Animation)
- Sucker Punch (English)
- Tofu Kozo (Japanese/Animation 3D)
- Gantz Perfect Answer (Japanese)
- Youka Me No Semi (Japanese)
- Gulliver's Travels (English 3D)
- Detective Conan - Quarter Of Silence (Japanese/Animation)
- Mars Needs Moms (English/Animation 3D)

### Coming Soon

- Somewhere (English)
- Tezuka Osamu's "Buddha" (Japanese/Animation 3D)
- Paradise Kiss (Japanese)
- Andalucia - Goddess's Revenge (Japanese)
- Adjustment Bureau (English)
- I Am Number Four (English)
- Pirates Of The Caribbean - On Stranger Tides (English)

Movie schedules change often. Please call the theater for confirmation and details.

## Japanese Language Classes

The Asahikawa International Committee will provide Japanese language courses every Tuesday from May 10 to August 16, 2011, for a total of 15 lessons. We will offer the following courses:

### Beginner Course

*For those who can read and write hiragana and katakana and make simple sentences. Basic grammar as well as simple, useful everyday expressions will be taught.*

### Intermediate Course

*For those who have already learned hiragana, katakana, and some kanji, and who understand basic Japanese conversation. This course will allow you to improve your command of Japanese.*

**Dates:** Every Tuesday from May 10th, 2011.

**Time:** 3:30pm ~ 5:00pm

**Charge:** ¥3,000 for 15 classes to be paid in full on the first day  
(Fees for textbooks are separate).

\*Tuition fees will be waived for those receiving city welfare aid, students, etc.

\*No portion of the tuition fee will be reimbursed in the event of absence.

**Seat Limit:** 8 people for each course

**Location:** AIC Study Room (6-jo-dori 10-chome)

**Please contact Ms. Sasaki or Ms. Saito of the AIC for more information or to register.**

## Fun Fridays

Leaders coordinate a variety of interesting activities such as games, discussions, introductions, and quizzes. Meet new people, relax, relate, and communicate through English.

**Dates:** Spring Session: April 8th, May 13th, June 10th

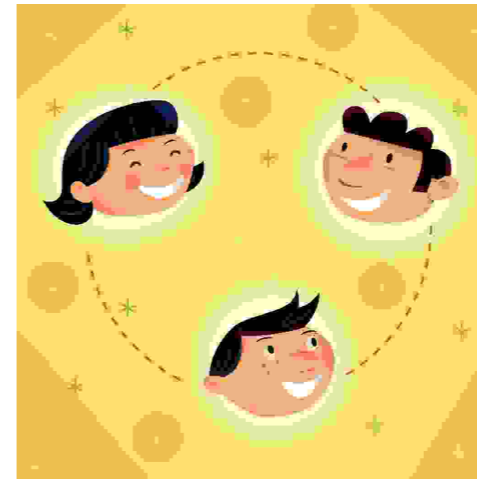
**Time:** 1:00 ~ 3:00pm & 6:30 ~ 8:30pm, 2nd Friday of the month

**Location:** AIC Study Room (6-jo-dori 10-chome)

**Charge:** ¥1,500 for 3 months (Free for volunteer leaders)

**To register contact AIC.**

**Tel:** 25-7491



**The AIC offers many services to make your life in Asahikawa more enjoyable. Here are just a few:**

**Volunteer Guide:** Volunteers are registered to help translate and interpret.

**Event Volunteer:** The AIC has many exciting events planned for this year, including Friendship Parties and a Halloween Party. Why not become a volunteer and help plan these events?

**Homestay:** Families are registered to welcome you into their homes for an overnight stay or just for an afternoon visit.

**For further information or to register, please contact AIC.**

**AIC Computer:** The AIC has a computer available for public use free of charge in the International Corner (6-jo-dori 10-chome). There is a time limit for use. Please feel free to come by and use it anytime as well as check out some of the other services and activities available at the AIC.

## Spread the Word...

Contribute to the AIC newsletter and share any interesting information you may have with other readers. You may write on any topic including, items to buy or sell, offers for culture/language exchanges, or write an essay about your life in Asahikawa or your hometown. The article should not be profit related! Please send your submissions to us at the AIC.



Asahikawa International Committee, International Affairs Division  
Third Office 1F, Asahikawa City Hall, 6-jo-dori 10-chome, Asahikawa 070-8525  
**Tel:** (0166) 25-7491 **Fax:** (0166) 23-4924  
**E-mail:** cir\_kokusai@city.asahikawa.hokkaido.jp

**\*\*The opinions expressed in the essays are those of the writers and do not necessarily reflect the opinions of the Asahikawa International Committee or the City of Asahikawa.\*\***