

# 旭川 ASAHIKAWA Info

October 2011 VOL. 179



## Hokkaido News Top 5



October 2011

Compiled by TAKADA Nobuhiro

### August 25

“Yodobashi Camera,” a major electronic goods outlet, has decided to postpone the building of a new commercial facility at the site of the “Sapporo Seibu Department Store” building. The electronic goods outlet has had a hard time finding enough tenants for the new building as a consequence of the March 11<sup>th</sup> disaster. It had bought out the land and the building in front of JR Sapporo Station from “Sogo Seibu Company” for the price of ¥850 million, last January. The volume retailer has been demolishing the old building and plans to use the vacant lot as a parking lot.

### August 26

A 35-year-old Japanese from Okinawa confronted by Russian Border Security Agency off Kunashir Island has returned to Nemuro in a patrol vessel of Japan Coast Guard. His kayak got taken by a current while he was paddling near Cape Shiretoko on August 18<sup>th</sup>, and he approached the island calling for help. He headed off for Aidomari, in Raosu, from Utoro in his sea kayak on August 16<sup>th</sup>.

### August 31

Statistic estimates that there are 49,860 company presidents from Hokkaido in Japan. The results were announced by the Hokkaido Branch Office of Tokyo Shoko Research Ltd. It’s in second place to Tokyo which has 83,733 presidents. Hokkaido surpassed both Osaka and Aichi Prefectures in terms of the number of company presidents.

### September 19

The president of JR Hokkaido was found dead off Otaru. The president had been missing from September 12<sup>th</sup> after leaving an apparent suicide notes at home. JR (Japan Rail) Hokkaido has been blamed for a number of serious accidents, including a derailment in May.

### September 20

“Tabé-Marche 2011,” a local food festival on Kaimono Koen Shopping Street which ran from September 17<sup>th</sup> to 19<sup>th</sup> had attracted over 762,000 visitors. The results were announced by the executive committee of the event. The turn-out was 60,000 less than last year, due to poor weather. The number of visitors to the event was 232,000 on 17<sup>th</sup>, 197,000 on 18<sup>th</sup> and 297,000 on 19<sup>th</sup>, the executive committee of “Tabé-Marche” said.



**For further information or to register for events contact:**

Asahikawa International Committee  
(SASAKI Mai, Sergej NESIC, or SAITO Emmy)

**Location:**

International Affairs Division, Civic and Community Services Dept.

**Address:**

Asahikawa International Center Feeeeal  
Asahikawa 7F, 1-jo-dori 8-chome, Asahikawa 070-0031

**Tel:** (0166) 25-7491

**Fax:** (0166) 23-4924

**E-mail:**

cir\_kokusai@city.asahikawa.hokkaido.jp

### Inside This Issue...

<b>Hokkaido News Top 5</b> <i>By TAKADA Nobuhiro</i>	1	<b>Origins Of Words</b> “Janglish” <i>By KAWAI Tatsuo</i>	7
<b>Upcoming Events</b>	2-3	<b>Hello Wildflowers</b> “Thimbleweed” <i>By Hitoshi KUDOH</i>	8
<b>Hello Asahikawa</b> “Maria Lu” <i>Interviewed by AIC</i>	4-5	<b>Movies</b>	9
<b>Life In Japan</b> “Kita Makura” <i>By SEO Ayumi</i>	6	<b>Bulletin Board</b>	10

Special Thanks to KAWAI Tatsuo  
Proofreader & Advisor

## “DREAM TO DREAM” SHIKI THEATER COMPANY PERFORMANCE

## 劇団四季のオリジナルミュージカル「夢から醒めた夢」

An original “Shiki” fantasy story written by ARAKAWA Jiro and performed over 1400 times since 1987. The story centers around a young girl named Piko who spends most of her time day dreaming about a fantasy world. One evening while she whiles away her time in a lonely playground she is approached by another young girl named Mako. Mako turns out to be a ghost who doesn't want to leave for the afterworld before saying goodbye to her mother. She asks Piko to trade places with her for just one day, and the amazing journey begins.

**Date:** October 25th (Tuesday)

**Time:** Doors 6:00pm, Show 6:30pm

**Venue:** Asahikawa Civic Culture Hall (7-jo 9-chome)

**Admission:** SS Seats ¥8,000, S Seats ¥6,500, A Seats ¥5,000, B Seats ¥3,000

**Ticket Office:** JR Asahikawa Station, Twinkle Plaza Asahikawa Store, Gyokkodo, FM Riberu Ticket Box, Ticket Pia

**For further information contact:** 66-0677 (SHIKI Theater Company Hokkaido Office)



## CHAGALL, PASCIN, &amp; ECOLE DE PARIS ARTISTS EXHIBITION

## シャガール、パスキンとエコール・ド・パリの綺羅星たち

Marc Chagall and Jules Pascin were members of the 1920's art movement named “Ecole de Paris” (School of Paris) which also included Picasso. They painted in the styles of Post-Impressionism, Cubism, and Fauvism. The movement was made up of young non-French painters who came to the “The City of Light” in the early 20th century attracted by the city's exciting arts scene. The exhibited works are part of the Sapporo Hokkaido Museum of Modern Art's collection and also include works by other Ecole de Paris artists.

**Date:** Now to November 13th (Sunday)

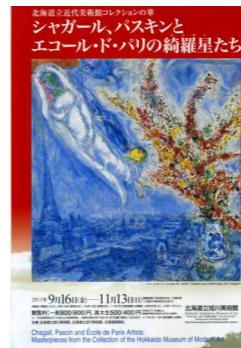
**Time:** 9:30am~5:00pm (last entry 4:30pm) Museum is closed on Mondays.

**Venue:** Hokkaido Asahikawa Museum of Art (Tokiwa Park)

**Admission:** General ¥800(\* for groups of over 10 people ¥600) University & High School Students ¥500(\* ¥400,) Junior High & Elementary School Students Free.

**Ticket Office:** Hokkaido Asahikawa Museum of Art

**For further information contact:** 25-2577 (Hokkaido Asahikawa Museum of Art)



## FUNAKOSHI YASUTAKE &amp; FUNAKOSHI KATSURA'S EXHIBITION “QUIET POETRY”

## 舟越保武・舟越桂「静かな詩」展示会

A collection of bronze, marble, and sandstone sculptures by these two artists taken from the NAKAHARA Teijiro Museum prize-winners collection, Sapporo's Mori Arts Museum, and Hokkaido Asahikawa Arts Museum.

**Date:** Now ~ October 16th (Sunday)

**Times:** 9:00am ~ 5:00pm (Last entry 4:30pm)

Closed Mondays (or the Tuesday after a Monday holiday)

**Venue:** NAKAHARA Teijiro Memorial Sculpture Museum (Shunko 5-jo 7-chome)

**Admission:** General ¥300, High School Students ¥200, Junior High School Students and Under Free

**For further information contact:** 52-0033 (NAKAHARA Teijiro Memorial Sculpture Museum)



## “2011 ASAHIKAWA VIENNA INTERNATIONAL VIOLIN SEMINAR” SELECTION TRIALS FOR THE 2012 MOZARTEUM INTERNATIONAL SUMMER ACADEMY

## 2011旭川・ウィーン国際ヴァイオリンセミナー受講生成果発表会兼212モーツアルテム国際サマーアカデミー派遣選考会

Come and see the best of Asahikawa's young violinists as they battle it out for the chance to attend the prestigious Mozarteum Summer Academy. The selection trials are the finale of the annual 2011 Asahikawa Vienna International Violin Seminar conducted top Japanese and international violinists led by Michael Frischenschlager.

**Date:** October 31st (Monday)

**Time:** Show 3:00pm

**Venue:** Asahikawa Taisetsu Crystal Hall (Kagura 3-jo 7-chome)

**Admission:** Free

**For further information contact:** 69-2000(Asahikawa Vienna International Violin Seminar Committee)



## MATSUI MAKOTO'S "ZANGEKYO - A MAN'S JOURNEY" NATIONAL TOUR

松井 誠 全国ツアー「残華鏡 - 男の旅路」

The world famous Ginza-based traditional Japanese theater company is back in Asahikawa again. The company is named after its founder and top performer MATSUI Makoto, affectionately known as Mako-sama. MATSUI is most famous for his female impersonation routines which will also be played out in this year's performance.

**Date:** October 20th (Thursday)  
**Time:** Doors 1:30pm, Show 2:00pm  
**Venue:** Asahikawa Civic Culture Hall (7-jo 9-chome)  
**Admission:** S Seats ¥6,500, A Seats ¥5,500, B Seats ¥3,000  
**Ticket Office:** Gyokkodo, Lawson Ticket, Ticket Pia,  
**For further information:** 011-261-9991 (Trust Kikaku Create)



## BIG BAND JAZZ 10TH ANNUAL "SWING MESSENGERS ORCHESTRA" CONCERT

スウィング・メッセンジャーズ・オーケストラ第10回チャリティコンサート

This year's concert by this amazing swing jazz big band will include all-time favourites such as "Sing Sing Sing" made famous by Benny Goodman, Glenn Miller's "Moonlight Serenade," "To Love Again" from "The Eddy Duchin Story," and many more. Also, this year's concert will feature as special guest performers the all-female vocal quintet "Fantasticks."

**Date:** October 30th (Sunday)  
**Time:** Doors 6:00pm, Show 6:30pm  
**Venue:** Asahikawa Public Hall (Tokiwa Park)  
**Admission:** General ¥1,000, Junior High School Students ¥500, Elementary School Students and Under Free  
**Ticket Office:** Asahikawa Yamaha Music Store, Kawai Asahikawa Showroom, FM Riberu, Café Gallery Mai Burendo, Jazz Soba, Kato Music Office, Gyokkodo, Fukido, Coach & Four, Kudou Pharmacy  
**For further information contact:** 090-6445-4699 (NAKANO)



## PEGGY HAYAMA'S 60TH ANNIVERSARY CONCERT RECITAL

ペギー葉山 60周年記念リサイタル

Peggy HAYAMA (real name, MORI Shigeko) made her public singing debut at 16 performing to the Occupation Forces just after WWII. She made her recording debut in 1952 with the hit "Domino/ Hi no Seppun (Kiss of Fire)." Since then HAYAMA has recorded over 2,000 songs and 60 albums to become one of Japan's most prolific singer/songwriters. She has made countless TV appearances and appeared in a number of commercials.

**Date:** November 16th (Wednesday)  
**Time:** Doors 6:00pm, Show 6:30pm  
**Venue:** Asahikawa Civic Culture Hall (7-jo 9-chome)  
**Admission:** General ¥5,000  
**Ticket Office:** Gyokkodo, FM Riberu, Lawson Ticket, Ticket Pia, Asahikawa Music Appreciation Society  
**For further information contact:** 011-533-7711 (ADASH)



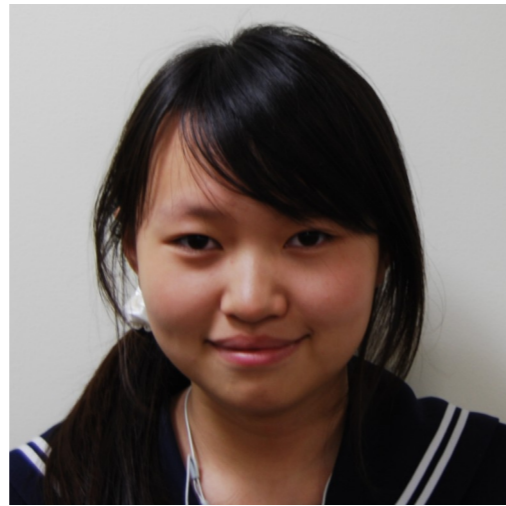
## "NENE" FIRST LIVE 2011

NENE is one of Asahikawa's most promising up-and-coming singers. NENE is affiliated with g.f. Music studio at Ginza plaza. She will perform, amongst others, her debut single Codicia.

**Date:** November 12th (Saturday)  
**Time:** Doors 6:00pm, Show 7:00pm  
**Venue:** Asahikawa Civic Culture Hall (7-jo 9-chome)  
**Admission:** General ¥2,000 (¥2,500 at the door)  
**Ticket Office:** g.f. music, Taisetsu Beer Hall, Sound Kikaku, Casino Drive  
**For further information contact:** 23-5751 (G.F. Music)



EVENTS IN ASAHIKAWA FOR OCTOBER



# Hello Asahikawa!

**Name:** Maria Lu

**Hometown:** Beijing, China

**Current home:** Edmonton, Alberta, Canada

**Interviewed:** 20th September, 2011

**AIC:** *What do you do here in Asahikawa?*

**Maria:** I am an international exchange student at Asahikawa's Kita (North) High School. Unfortunately, I'm only staying here for two months.

**AIC:** *Why did you choose Asahikawa?*

**Maria:** The exchange program that I've joined is limited to high schools in Hokkaido. It's part of the Hokkaido/Alberta exchange program, and they sent me to Asahikawa. This is a government program hosted by A.T.A. (Alberta Teachers' Association). I believe they have a partnership agreement with Hokkaido. This exchange program immerses second language learners in their language of study. Students study in Germany, Japan, Mexico, Spain or Quebec for approximately three months and host their German, Japanese, Mexican, Spanish or Quebecois counterpart for three months in Alberta for three months. It's run annually and this year six students from Alberta came to Hokkaido. I'm the only one assigned to Asahikawa.

**AIC:** *Do you keep in touch with the other students sent to Hokkaido from Alberta?*

**Maria:** Not really. We only get to meet once, and that for a pre-departure meeting in Canada. Actually, one of the other students on this year's exchange program is a classmate of mine in my high school back in Edmonton, so I have her contact information. There's a couple of them in Sapporo, and my classmate is in Ebetsu. She goes to school in Sapporo, so she has to take a one and a half hour train ride to school every day.

**AIC:** *Why did you choose to join this international exchange program?*

**Maria:** I thought it would be a great opportunity to improve my Japanese language skills, and to learn about Japanese culture first hand. I sincerely hope that this experience helps me grow as young adult.

**AIC:** *Have you traveled abroad previously?*

**Maria:** Well, I was born in Beijing, China. I was in second grade when we left China for Canada. The reason why we left China was because my mum entered an MBA course in York University in Toronto. When she completed her MBA she got a job in Edmonton and hence the reason why we moved there. I've also traveled to Thailand and the US.

**AIC:** *Tell us a little bit about your hometown of Beijing, and your adopted hometown of Edmonton?*

**Maria:** Beijing is a very big and busy city. There are a lot of people, and its population is over 19,000,000. It's the capital city of China, so it's also very international.

*Continued from Page 4*

**Maria:** It's very difficult to describe it. I guess the best way is to say that it's a big Asian city. I travel back often and I always spend my summers in Beijing. The main reason I go back often is to visit my dad. I really enjoy my time in Beijing, as I love shopping and China, especially Beijing, is great for shopping. I like to visit friends and former classmates, and I also play sports with my dad. My dad loves badminton and so do I. However, my favourite sport is skiing. I'm kind of sad that I'll miss out on the ski season here in Asahikawa.

Now, Edmonton is a very, very cold city. Around a third of the year is cold season. The spring and summer seasons are very short. Edmonton is famous for its ski resorts as there are a lot of mountains around the city. People from all over the world visit Edmonton for skiing. I've met a lot of people from all around the world through skiing.

**AIC:** *What do you like to do in your free time back home?*

**Maria:** Naturally, I go skiing very often. I also like to go shopping with my friends. We have this very famous mall in Edmonton called the "West Edmonton Mall" which is the largest shopping mall in North America. It's really fun. There's a huge pirate ship, and even a dragon inside the movie theater which blows fire. I think it blows fire every full hour, this really scary music comes on, then he starts to move and blow fire. I also used to train synchronized swimming for a club. It's a very hard sport, basically it's like dancing on water. I trained every day for three to four hours. During training we practice holding our breath while swimming laps. Some people from the club can do it for 50 meters, but my best was just over 25 meters. The training was really intense, I basically swam for 24 hours a week. It just became too time consuming, so I had to give it up in order to concentrate on my studies.

**AIC:** *How do you spend your free time here in Asahikawa?*

**Maria:** I have a lot of fun here. I really enjoy the fashion scene in Japan, so I spend a lot of my free time shopping for clothes. I like to go shopping in the downtown area as well as in Aeon Shopping Center. Compared to Canada, some stuff is really cheap, but others are expensive. I'm staying with a host family which is very enjoyable and educational. There are certain cultural differences that take some time getting used to. I've only studied Japanese at school for one year, so the communication can be somewhat of a problem at times. Also, a difference with Canadian and Japanese schools is the length of classes. In Canada a class is one and a half hours whereas in Japan it's around fifty minutes. I lived in Asia, so nothing really surprised me too much here in Japan. Also, I've read a lot of manga, as I love anime, which prepared me pretty well for life in Japan. I love traditional Japanese culture, so I participate in many clubs involving Japanese culture at Kita High School and I really enjoy studying it in my free time.

**AIC:** *What are your plans for the future?*

**Maria:** Well, when I get back to Canada I'll be preparing to welcome my Asahikawa host-sister who'll be staying with me for two months, as part of the exchange program. I look forward to showing her the sights of Edmonton and I hope it will be a good introduction into Canadian culture for her. In the future I would like to enter a MBA course at a good university and hopefully work in the commercial sector somewhere in Asia. I've studied French at school, as it's the second language in Canada, so I also hope to visit Paris some day.

**AIC:** *Well, thank you very much for your time, Maria.*

**Maria:** You're welcome.

# Life In Japan

## KITA MAKURA (北枕; North Facing Pillow)

By SEO Ayumi

*Kita-makura* means sleeping with your head directed towards the north and your feet to the south. Most Japanese children are told *Kita-makura* is only for the dead; therefore they must avoid sleeping with a *Kita-makura*. It is said to bring bad luck. Although most are aware that *Kita-makura* is just superstition, it is nonetheless avoided by people of all ages.

Why is *Kita-makura* associated with death? The most common theory has Buddhist origins. When Buddha died, it is said that his head was in the north and his face was facing towards the west. Since then, people have laid the dead in the way of *Kita-makura*, wishing for the deceased to go to heaven.

However, studies show that even in the Jomon Era, which was long before Buddhism was brought to Japan, most of the dead were buried with their heads directed north. It still has not been established as to why this is so. However, the belief that *Kita-makura* brings bad luck seems to come from the seemingly simple explanation that death is a horrid thing and the living should not associate with it.

*Kita-makura* has been attracting a lot of people's attentions as of recently. In one theory, it is good for the body to relieve the strain on the heart by prompting circulation in the body in line with the Earth's magnetic field. In terms of *Feng shui* (an ancient Chinese system of aesthetics), it is believed to bring health and fortune, as well as good quality sleep.

Thus, there are pros and cons to *Kita-makura*. Ultimately, the direction in which you sleep is up to you. It might after all just depend on your way of thinking. In fact, I sleep in *Kita-makura* every night (as I have no choice due to lack of space), and nothing particularly bad has happened to me so far. If something were to happen, I hardly think it would be due to my sleeping direction. Actually, I've been wondering when it will bring me some financial luck.



# ASAHIKAWA Info

## Origins of Words

JANGLISH  
By KAWAI Tatsuo

アイディアマン : Ideas man	ガソリンスタンド : Gas station
アンケート : Questionnaire ; poll	ガスレンジ : Gas stove, cooker
イメージアップ : Image improvement	ガードマン : Security guard
EV : Department Store, subway, etc. elevator	カフェ : Café
インディアンズ : Cleveland Indians	カブス : Chicago Cubs
インフレ : Inflation	カメ : Meiji Era word for dog ( after hearing foreigners say to their dogs "Come here.")
ウェイストバッグ : Waist pouch	ガールハント : Cruising
エンゲージリング : Engagement ring	カレーライス : Curry & rice
エンゼルス : LA Angels	カンニング : Cheating in an exam
エンタイトル ツウ ベース : Entitled two base (baseball)	ギア : Gear shift, lever
エンドラン : Hit and run (baseball)	キャリアウーマン : A female with a successful career
オーダーメイド : Made-to-order	キャンピングカー : Camper van
オートバイ : Motorbike	グリーン : Golf (putting) green
オーバ : Overcoat	クローズアップ : NHK Program "Close Up"
オフィ斯拉ブ : Office affair	ゲッツーコース : Double play (baseball)
オペ : Medical operation	ゴールデンアワー : Prime Time TV viewing
オールドミス : Spinster, older unmarried woman	コンタクト : Contact lenses
オンザロック : On the rocks	コンビ : Combination
カーヂナルス : St. Louis Cardinals	

# Hello Wild Flowers

## WANDERING AMONG THE WILDFLOWERS AROUND ASAHIKAWA

BY Hitoshi KUDOH

She is about to dig out something from the earth. "What are you doing, and who are you ... if I may ask?" I call to the young. "As a matter of fact, I am Princess Nobita of Senobia. My dad is the King of Senobia. I am supposed to succeed him and would be the queen there." she introduces herself so. "But what does it have to do with such delving into the ground, I wonder?" I inquire.

"Ah, you know, before I become the Queen of Senobia, I have to accomplish my assignment that my dowager grandma has set me to tackle." says she. "Yes, she told me that this thimbleweed is a notorious invader around the world. This plant is replacing every nation's native plants so as to destroy our ecosystem, you should eradicate them and prevent the disaster, she said." adds she.

"You mean you're contributing to protect our ecosystem to be a queen? Are you pulling out all these weed of the world, then?" I am so surprised.

"Sure. But the problem is, pulling out the stem is not enough. Its rhizome remains stuck under the ground and will revive soon. I must remove all the roots. It's time consuming. I'd be an old woman before I achieve this goal."

**Ô-HANGONSÔ** (大反魂草) *Rudbeckia laciniata*  
family Composita

**Common name:** Golden-glow, Cutleaf Coneflower, Thimbleweed

**Description:** Large robust herbaceous perennial forb of dicotyledon. In spring, a shoot pokes out from its fibrous rhizome or a seed. Stems are stiff and erect, usually branched in the upper part.

Alternate slightly glaucous leaves are up to 30 cm long. Becoming gradually smaller as ascend the stems. Typical leaf has 3-7 large lobes, smooth or coarsely serrate. Uppermost small leaves have no lobe, lanceolate to ovate. Flower head spans 6-8 cm across. Cone disk comprises greenish tubular florets, 5 bracts. 6-12 yellow ray florets surround the cone, recurve to droop. Blooming from July - September, lasts about a month. Center cone elongates to an oblongoid thimble and become brownish as the achenes ripen. The tip of stigma withers and is shed. Achene has no pappus and rather persistent in winter.

Grows up to 90-250cm. Edible (very young leaves)

Habitat: Flood plains, roadside, railway. Native to eastern North America.

**Distribution:** Widely naturalized all over the world.



Watercolour painting of Ô-HANGONSÔ  
By Hitoshi KUDOH



## **Movies ~ October**

\*Every Wednesday is "Ladies' Day." Admission is ¥1,000 (tax included) for women at all theaters.

\*The 1<sup>st</sup> day of every month is "Movie Day" in Asahikawa. Admission (tax included) is ¥1,000 for Adults, ¥800 for Senior High School Students and Under at all theaters.

★ **Cineplex 7 Asahikawa:** Nagayama 12-jo 3-chome Western Powers Nagayama / ☎ 49 – 1000

URL: <http://www.kadokawa-cineplex.co.jp/asahikawa/> (Japanese)

**Directions:** Take Dohoku Bus No. 66, 72 or 665 at Bus stop No. 18 in front of Marui Imai Department Store (1-jo-dori 8-chome). Get off at "Nagayama 10 (ju)-jo 3 (san)-chome."

### Now Showing

- Second Virgin (Japanese)
- Hayabusa (Japanese)
- Kamisama no Karute (Japanese)
- Fast Five (English 3D)
- Dog & Police (Japanese)
- Kokurikozaka (Japanese/Animation)
- Tantei wa Bar ni Iru (Japanese)
- The Smurfs (Japanese/Animation 3D)
- The Smurfs (English/Animation 3D)
- Green Lantern (English)
- Sanctum (English 3D)
- Sanctum (Japanese 3D)
- Battle: Los Angeles (English)
- The Answer (Japanese)
- Life (English)
- Moteki (Japanese)

### Coming Soon

- The Rise of the Planet of the Apes (Japanese)
- The Rise of the Planet of the Apes (English)
- Captain America - The First Avenger (English)
- Yoake no Machide (Japanese)
- Tsure ga Utsu ni Narimashita (Japanese)
- Ichimei (Japanese)

★ **Dinos Cinemas:** Taisetsu-dori 5-chome / ☎ 21 – 1218

URL: [http://www.geodinos.jp/cinema/asa\\_schedule.php?StoreID=5](http://www.geodinos.jp/cinema/asa_schedule.php?StoreID=5) (Japanese)

**Directions:** Take Dohoku Bus No. 61, 62, 67 or 667 at Bus stop No. 18 in front of Marui Imai Department Store (1-jo-dori 8-chome). Get off at "Nippon Seishi mae."

### Now Showing

- Dear John (English)
- Biutiful (Spanish)
- Friends With Benefits (English)
- Cars 2 (English/Animation)
- Final Destination 5 (English)
- Kokurikozaka (Japanese/Animation)
- Life (English)
- Tantei wa Bar Ni Iru (Japanese)
- Battle: Los Angeles (English)
- The Answer (Japanese)
- Moteki (Japanese)
- Bokutachi wa Sekai wo Kaerukoto ga Dekimasen(We Can't Change the World) (Japanese)
- Hayabusa (Japanese)
- Fast Five (English 3D)

### Coming Soon

- Smuggler (Japanese)
- Ajoshi (Korean)
- Priest (English)
- Cowboys & Aliens (Japanese)
- 127 Hours (English)
- The Rise of the Planet of the Apes (Japanese)
- Captain America - The First Avenger (English)

Movie schedules change often. Please call the theater for confirmation and details.

# 2011 Happy Halloween Party

Trick or treat! Halloween is a day for costumes and candy, and what better way to celebrate than by coming to this year's Happy Halloween Party. This year's party will be held inside the brand new Asahikawa International Center on the 7th floor of "Feeeal Asahikawa" shopping complex.

**Date:** October 29th (Saturday)  
**Time:** 4:00pm ~ 6:00pm  
**Place:** Feeeal Asahikawa 7th Floor (1-jo 8-chome)  
**Charge:** ¥500  
**For further information or registration contact AIC:**  
**Tel: 25-7491**



The AIC offers many services to make your life in Asahikawa more enjoyable. Here are just a few:

**Volunteer Guide:** Volunteers are registered to help translate and interpret.

**Event Volunteer:** The AIC has many exciting events planned for this year, including Friendship Parties and a Halloween Party. Why not become a volunteer and help plan these events?

**Homestay:** Families are registered to welcome you into their homes for an overnight stay or just for an afternoon visit.

**For further information or to register, please contact AIC.**

**AIC Computers:** The AIC has two computer available for public use free of charge at the Asahikawa International Center (Feeeal Asahikawa 7F 1-jo-dori 8-chome). There is a time limit for use and you must register prior to use. Please feel free to come by and use it anytime as well as check out some of the other services and activities available at the AIC.

## Spread the Word...

Contribute to the AIC newsletter and share any interesting information you may have with other readers. You may write on any topic including, items to buy or sell, offers for culture/language exchanges, or write an essay about your life in Asahikawa or your hometown. The article should not be profit related! Please send your submissions to us at the AIC.



Asahikawa International Committee, International Affairs Division  
 Asahikawa International Center Feeeal Asahikawa 7F, 1-jo-dori 8-chome, Asahikawa 070-0031  
 Tel: (0166) 25-7491 Fax: (0166) 23-4924  
 E-mail: cir\_kokusai@city.asahikawa.hokkaido.jp

# Fun Fridays

Leaders coordinate a variety of interesting activities such as games, discussions, introductions, and quizzes. Meet new people, relax, relate, and communicate through English.

**Dates:** *Autumn Session:* October 14th, November 11th, December 9th  
**Time:** 1:00 ~ 3:00pm & 6:30 ~ 8:30pm, 2nd Friday of the month  
**Location:** Asahikawa International Center, Common Meeting Room (1) Feeeal Asahikawa 7F 1-jo-dori 8-chome  
**Charge:** ¥1,500 for 3 months (Free for volunteer leaders)  
**To register contact AIC.**  
**Tel: 25-7491**

# AIC Book Collection

If you have unwanted new or second-hand books in languages other than Japanese, the AIC would love to place them in our AIC book corner.

**To donate contact AIC.**  
**Tel: 25-7491**

**\*\*The opinions expressed in the essays are those of the writers and do not necessarily reflect the opinions of the Asahikawa International Committee or the City of Asahikawa.\*\***